

MEETINGS & TRAINING

Leonardo Royal London Tower Bridge



Leonardo
Hotels

For Meeting enquiries

Tel: 0845 525 6338 Email: meet@leonardohotels.co.uk

For all other enquiries, contact the Hotel directly

Leonardo Royal London Tower Bridge

45 Prescott Street, London E1 8GP

Tel: 020 7959 5000

Email: towerbridgeevents@leonardohotels.co.uk

Leonardo
Hotels

Welcome to Leonardo Royal London Tower Bridge

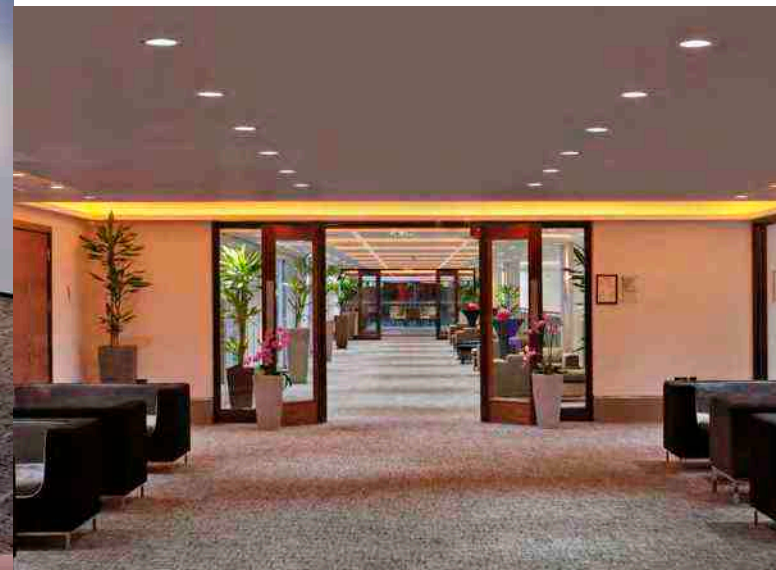
Our extensive and flexible range of meeting rooms are the ideal venue for training, residential training and small meetings

TRAINING AND SMALL MEETINGS FOR UP TO 48 PEOPLE

Leonardo Royal London Tower Bridge offers 11 rooms suitable for training and small to medium sized meetings.

All of our rooms are equipped with TVs and LCD projectors that can be connected to a laptop or portable device.

Featuring state of the art equipment as well as our dedicated team who are at your service, these rooms can be set up as U-shape, Cabaret, Boardroom, Classroom or Theatre style.



What We Offer

Here at Leonardo Royal London Tower Bridge we provide the space, style and attention to detail that you want and expect.

Our dedicated Meetings team will ensure your event runs smoothly and will be a success.

Our Meeting and Event Rooms include as standard:

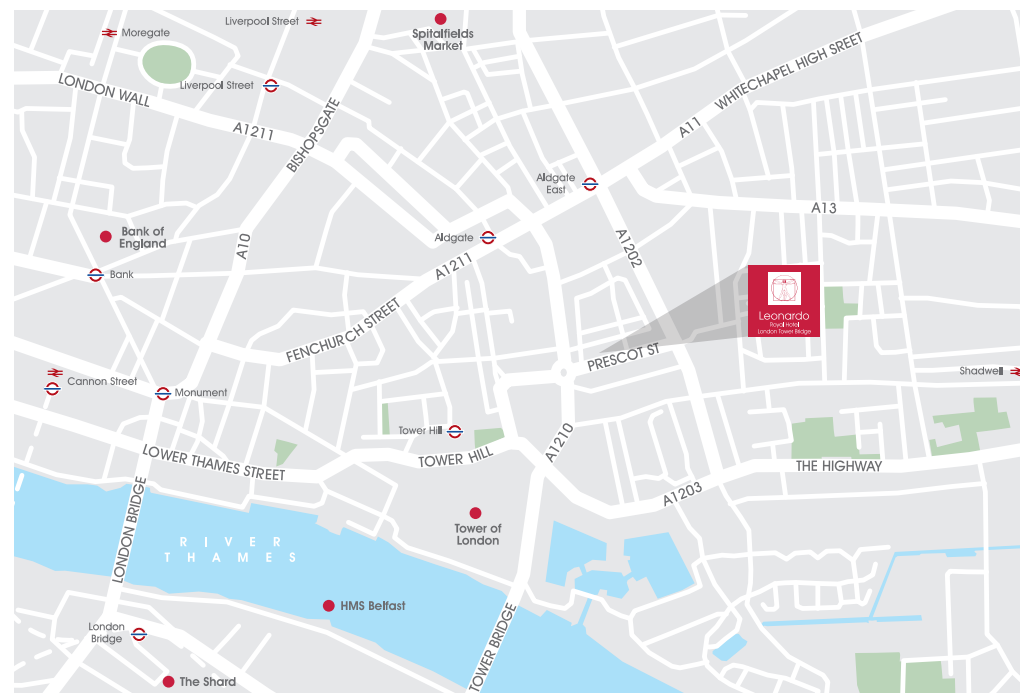
- LCD projector and screens
- Natural daylight
- Flexible space
- PA System
- High speed WiFi
- Air conditioning
- LED Coffers

Location

Leonardo Royal London Tower Bridge boasts a fantastic location close to the iconic Tower Bridge and a short walk from Tower Hill, Aldgate and Fenchurch Underground Stations giving easy access to both major financial institutions and London's most vibrant tourist attractions.

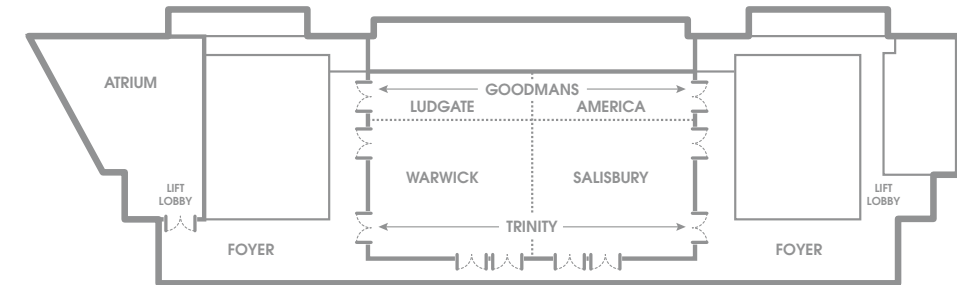
Location highlights

- 10 minute walk from Tower Hill and Aldgate Underground Stations
- 30 minutes by car from London City Airport and 25 minutes via Docklands Light Railway (DLR)
- 31 miles from Heathrow Airport

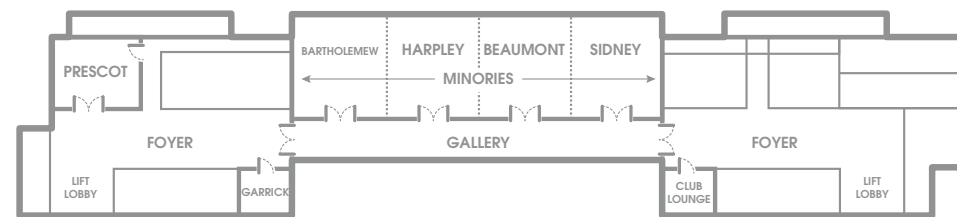


Floor Plans and Capacities

Basement 2



Floor 1



CAPACITIES AND DIMENSIONS

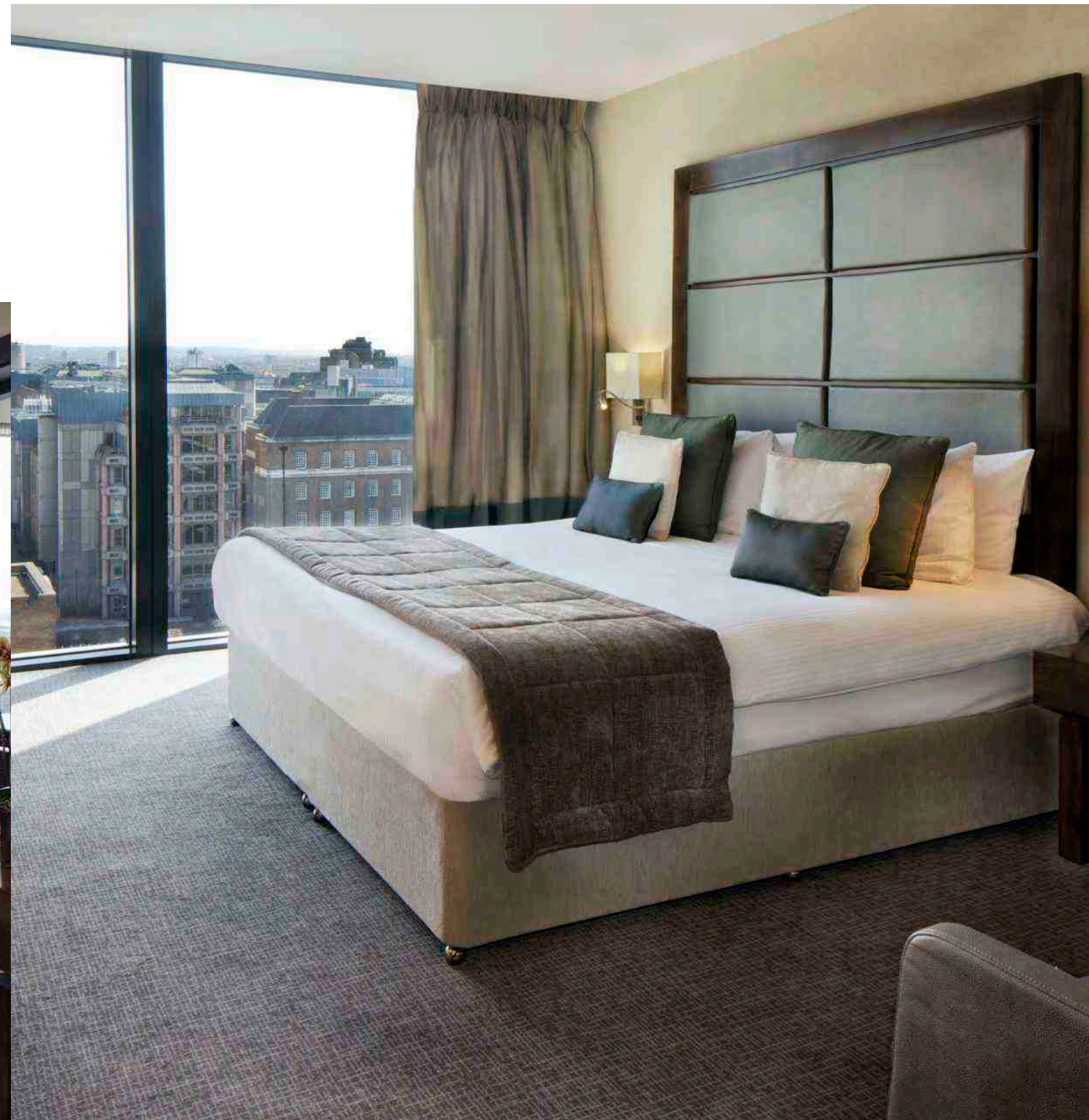
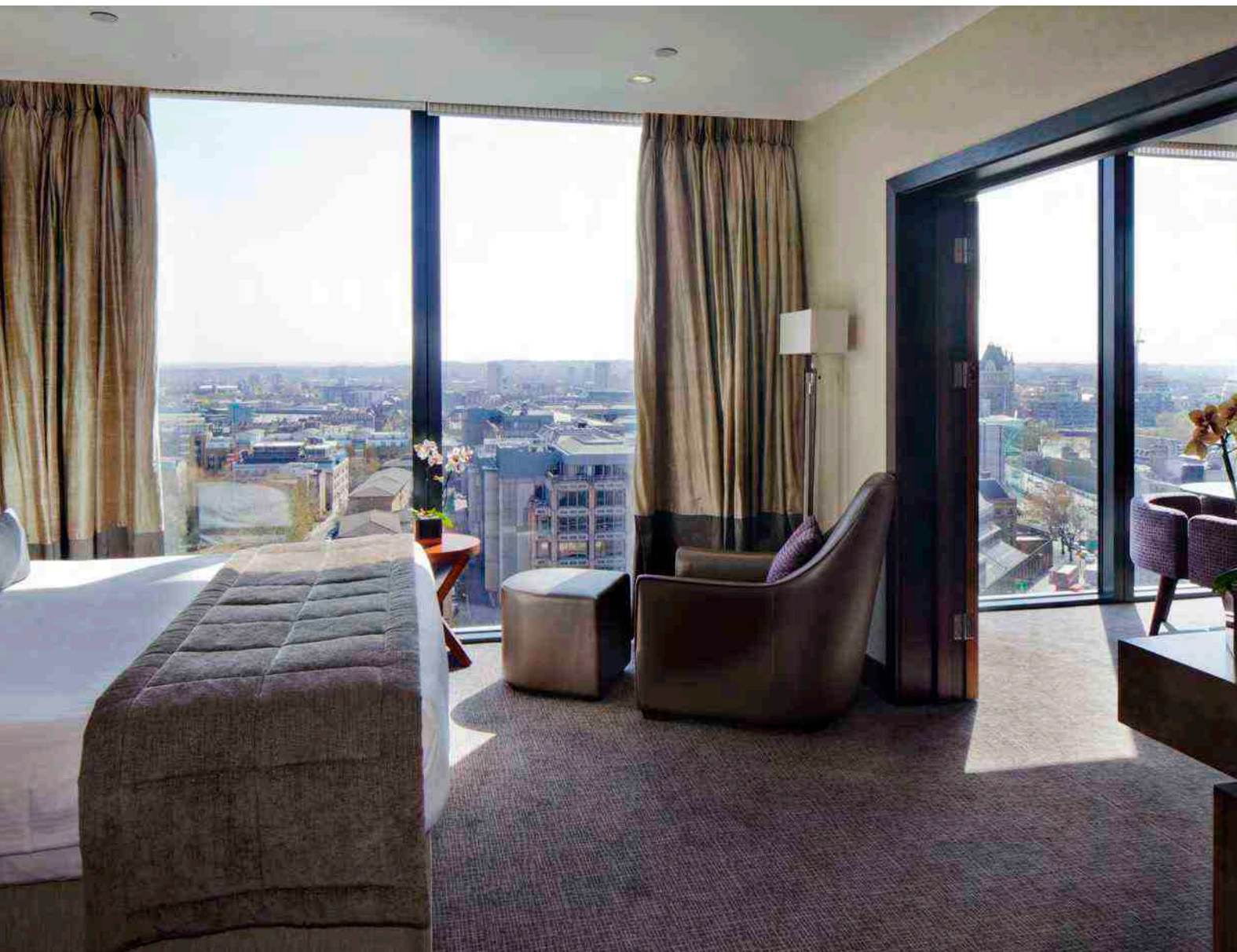
Room Name	Dimensions L x W x H (m)	Theatre	Boardroom	Classroom	Cabaret	U-Shape	Dinner Dance	Standing Reception
Trinity & Goodmans Suite	31.04 x 20.83 x 4.25	850	-	330	432	-	600	800
Trinity Suite	31.04 x 16.20 x 4.25	650	88	249	360	99	420	500
Warwick Suite	15.52 x 16.20 x 4.25	320	45	120	160	51	180	250
Salisbury Suite	15.52 x 16.20 x 4.25	320	45	120	160	51	180	250
Goodmans Suite	31.04 x 4.63 x 2.25	200	88	63	104	-	-	140
Ludgate Suite	15.52 x 4.63 x 2.25	90	42	27	40	-	-	80
America Suite	15.52 x 4.63 x 2.25	90	42	27	40	-	-	80
Foyer A & B & Atrium	-	-	-	-	-	-	-	500
Foyer A (Exhibition)	20.13 x 7.23 x 3.93	-	-	-	-	-	-	150
Foyer B (Exhibition)	20.13 x 7.23 x 3.93	-	-	-	-	-	-	150
Atrium	16.07 x 12.89 x 11.28	-	-	-	-	-	-	200
Conservatory	31.10 x 2.79 x 11.38	-	-	-	-	-	-	N/A
Conference Office	8.00 x 4.50 x 2.10	-	20	-	16	15	-	30
Minories Suite	31.24 x 11.73 x 2.70	400	93	168	256	105	300	400
Bartholemew Suite	11.73 x 7.81 x 2.70	120	30	45	64	30	70	90
Harpley Suite	11.73 x 7.81 x 2.70	120	30	45	64	30	70	90
Beaumont Suite	11.73 x 7.81 x 2.70	120	30	45	64	30	70	90
Sidney Suite	11.73 x 7.81 x 2.70	120	30	45	64	30	70	90
Bartholemew & Harpley Suite	15.62 x 11.73 x 2.70	240	48	90	128	40	140	200
Beaumont & Sidney Suite	15.62 x 11.73 x 2.70	240	48	90	128	40	140	200
Bartholemew, Harpley, Beaumont	23.43 x 11.73 x 2.70	330	72	135	184	60	210	290
Harpley, Beaumont & Sidney Suite	23.43 x 11.73 x 2.70	330	72	135	184	60	210	290
Gallery	31.50 x 4.90 x 2.70	-	-	-	-	-	-	150
Garrick Suite	3.45 x 4.78 x 2.28	12	10	-	-	-	-	-
Prescot Suite	7.99 x 7.38 x 2.70	70	18	24	32	15	-	40

Accommodation and Leisure

Our 370 stylish and spacious bedrooms are designed with comfort and convenience in mind providing a place to unwind or to catch up on work.

All of our rooms feature large comfortable beds, work desk with ergonomic chair, flat screen TVs, complimentary high speed WiFi and spacious en-suite bathrooms.

Our Executive rooms and Suites offer added amenities including larger beds, bathrobe and slippers, minibar and Sky TV package.



At a Glance

- 370 stylish and spacious bedrooms including executive rooms and suites
- 17 state of the art meeting and event rooms
- Tower Grill
- Tower Bar
- Knights Lounge
- Health and Leisure Centre including 25m swimming pool
- Spa

