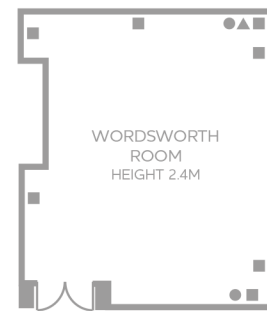
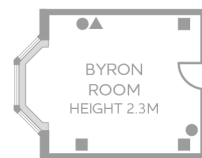
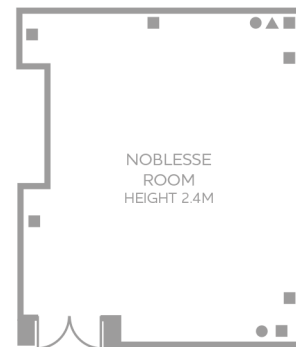
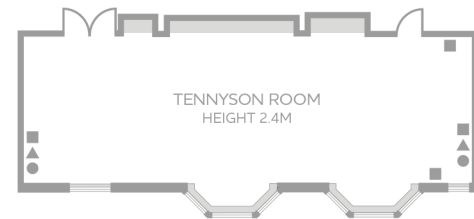
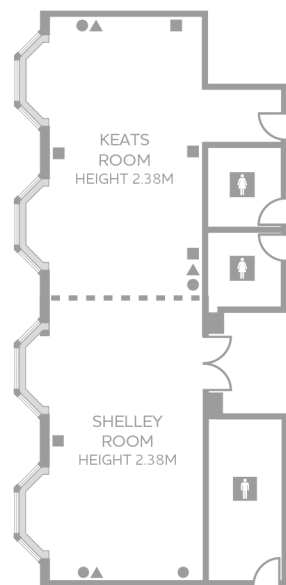
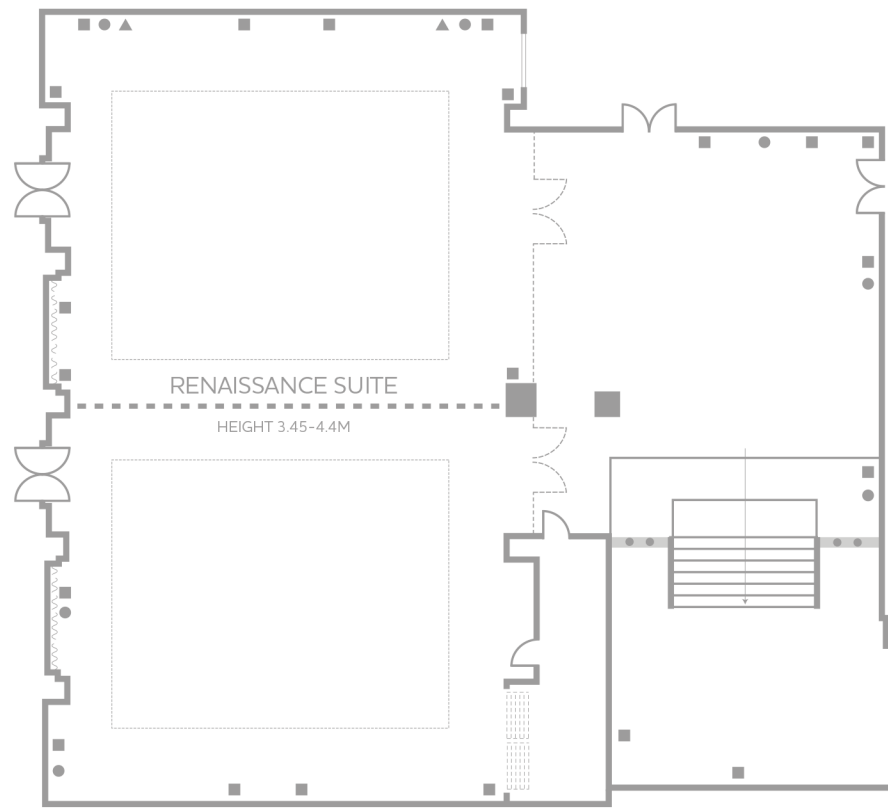


Leonardo Royal Hotel Brighton Waterfront

Floorplans and Capacities

Floor Plans



KEY

- ▲ AERIAL SOCKET
- TELEPHONE POINT
- 13 AMP SOCKET DOUBLE
- - - MOVABLE ACOUSTIC PARTITION

Room Capacities

	Theatre	Theatre (Back Projection)	Classroom	Boardroom	U-Shape	Cabaret (Full rounds)	Cabaret (Half rounds)	Banquet	Dinner Dance	Length (m)	Width	Height	Controls in Room	Tungsten	Dimmers	Blackout	Natural Light	3 Phase	Air Conditioning	ISDN 2	Free WiFi
Renaissance Suite	300	220	180	120	80	150	180	250	210	21.4	13.3	3.45-4.4	✓	-	✓	✓	-	✓	✓	-	✓
Keats Room	30	-	15	18	15	15	-	20	-	7.75	4.75	2.4	✓	-	✓	✓	✓	✓	✓	-	✓
Shelley Room	30	-	15	18	15	15	-	20	-	7.75	4.75	2.4	✓	-	✓	✓	✓	✓	✓	-	✓
Keats / Shelley Room	50	30	28	30	26	25	20	40	-	15.5	4.75	2.4	✓	-	✓	✓	✓	✓	✓	-	✓
Byron Room	-	-	-	8	-	-	-	-	-	3.8	4.7	2.4	✓	-	-	✓	✓	✓	✓	-	✓
Wordsworth Room	40	20	20	18	15	30	15	40	-	8.05	7.1	2.4	✓	-	✓	✓	✓	✓	✓	-	✓
Tennyson Room	60	30	32	34	32	25	15	40	-	12.4	4.7	2.4	✓	-	✓	✓	✓	-	✓	-	✓
Coleridge Room	-	-	-	14	-	-	-	-	-	8.1	4.75	2.4	✓	-	✓	✓	✓	-	✓	-	✓
Noblesse Room	100	-	32	25	25	80	40	90	80	16.8	7.5	2.4	-	-	✓	✓	✓	-	✓	-	✓
Library Terrace	100	-	-	30	-	-	-	90	-	9	15	10+	-	-	-	-	✓	-	✓	-	✓

Leonardo Royal Hotel Brighton Waterfront

For Meeting Enquiries

Tel 0845 525 6338 - Email meet@leonardohotels.com

For all other enquiries, contact the hotel directly

Leonardo Royal Hotel Brighton Waterfront
Kings Road, Brighton, BN1 2GS

Tel: 01273 763 244- Email BrightonRoyal@leonardohotels.com