



GLOBAL DIRECTORY



LEONARDO
ROYAL
Hotels

HERODS

LEONARDO
ROYAL
Hotels

HERODS

LEONARDO
ROYAL
Hotels

HERODS

u HOTELS

LEONARDO
BOUTIQUE
Hotels

u HOTELS

LEONARDO
BOUTIQUE
Hotels

u HOTELS

LEONARDO
BOUTIQUE
Hotels

LEONARDO
Hotels

HOTEL
ROTHSCHILD 22

LEONARDO
Hotels

HOTEL
ROTHSCHILD 22

LEONARDO
Hotels

HOTEL
ROTHSCHILD 22

HERODS

ALDEN
HOTEL - BOUTIQUE
LUXURY RESIDENCES

HERODS

ALDEN
HOTEL - BOUTIQUE
LUXURY RESIDENCES

HERODS

ALDEN
HOTEL - BOUTIQUE
LUXURY RESIDENCES

LEONARDO
BOUTIQUE
Hotels

NYX
HOTELS

LEONARDO
BOUTIQUE
Hotels

NYX
HOTELS

LEONARDO
BOUTIQUE
Hotels

NYX
HOTELS

HOTEL
ROTHSCHILD 22

LEONARDO *Limited Edition*

HOTEL
ROTHSCHILD 22

LEONARDO *Limited Edition*

HOTEL
ROTHSCHILD 22

LEONARDO *Limited Edition*

ALDEN
HOTEL - BOUTIQUE
LUXURY RESIDENCES

LEONARDO
ROYAL
Hotels

ALDEN
HOTEL - BOUTIQUE
LUXURY RESIDENCES

LEONARDO
ROYAL
Hotels

ALDEN
HOTEL - BOUTIQUE
LUXURY RESIDENCES

LEONARDO
ROYAL
Hotels

NYX
HOTELS

u HOTELS

NYX
HOTELS

u HOTELS

NYX
HOTELS

u HOTELS

LEONARDO *Limited Edition*

LEONARDO
Hotels

LEONARDO *Limited Edition*

LEONARDO
Hotels

LEONARDO *Limited Edition*

LEONARDO
Hotels

LEONARDO
ROYAL
Hotels

HERODS

LEONARDO
ROYAL
Hotels

HERODS

LEONARDO
ROYAL
Hotels

HERODS

u HOTELS

LEONARDO
BOUTIQUE
Hotels

u HOTELS

LEONARDO
BOUTIQUE
Hotels

u HOTELS

LEONARDO
BOUTIQUE
Hotels

LEONARDO
Hotels

HOTEL
ROTHSCHILD 22

LEONARDO
Hotels

HOTEL
ROTHSCHILD 22

LEONARDO
Hotels

HOTEL
ROTHSCHILD 22

HERODS

ALDEN
HOTEL - BOUTIQUE
LUXURY RESIDENCES

HERODS

ALDEN
HOTEL - BOUTIQUE
LUXURY RESIDENCES

HERODS

ALDEN
HOTEL - BOUTIQUE
LUXURY RESIDENCES

LEONARDO
BOUTIQUE
Hotels

NYX
HOTELS

LEONARDO
BOUTIQUE
Hotels

NYX
HOTELS

LEONARDO
BOUTIQUE
Hotels

NYX
HOTELS

HOTEL
ROTHSCHILD 22

LEONARDO *Limited Edition*

HOTEL
ROTHSCHILD 22

LEONARDO *Limited Edition*

HOTEL
ROTHSCHILD 22

LEONARDO *Limited Edition*

ALDEN
HOTEL - BOUTIQUE
LUXURY RESIDENCES

LEONARDO
ROYAL
Hotels

ALDEN
HOTEL - BOUTIQUE
LUXURY RESIDENCES

LEONARDO
ROYAL
Hotels

ALDEN
HOTEL - BOUTIQUE
LUXURY RESIDENCES

LEONARDO
ROYAL
Hotels

NYX
HOTELS

u HOTELS

NYX
HOTELS

u HOTELS

NYX
HOTELS

u HOTELS

LEONARDO *Limited Edition*

LEONARDO
Hotels

LEONARDO *Limited Edition*

LEONARDO
Hotels

LEONARDO *Limited Edition*

LEONARDO
Hotels

EUROPE'S
FASTEST
GROWING
HOTEL GROUP,
with more than
255 hotels in over
115 destinations.

CONTENTS

05 Introduction

08 Germany

**52 United
Kingdom**

88 Israel

112 Netherlands

124 Belgium

126 Spain

140 Austria

146 Italy

**152 Republic
of Ireland**

156 Cyprus

162 Poland

166 Switzerland

170 Hungary

174 Greece

**178 Czech
Republic**

180 Romania



Whether it's a city break or a business trip, Leonardo Hotels offer outstanding accommodation in a range of superb locations right across UK, Ireland, Mainland Europe and Israel. We're one of the leading names in the hotel industry, but it's our personal and warm hospitality that really makes the difference.

At the forefront of this are our dedicated and passionate staff, who take pride in the exceptional service we provide. Our team wants to win the hearts and minds of our guests - and constantly challenges its own standards - to create truly memorable experiences for all of them.

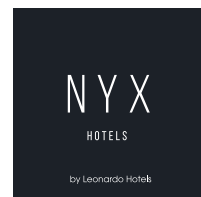
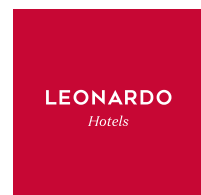
We know that great hospitality requires great comforts too. So all our rooms feature 'dream beds' for the best rest possible, plus mod-cons like fast Wi-Fi and flat-screen TVs. Elsewhere, our stylish restaurants and bars serve up tasty options all day, from leisurely breakfasts to delicious dinners and late-night drinks.

Flexible, well-equipped meeting spaces are also widely available to host conferences and corporate events in smart but relaxed settings. Like every aspect of our offering, these business facilities are run by experienced and dependable professionals who will help your gathering, large or small, to go smoothly.

At Leonardo Hotels, we believe that great hotel experiences come down to genuine hospitality.

Now... *Come join us.*

A GLOBAL BRAND



LEONARDO *Limited Edition*



HERODS

HOTEL
ROTHSCHILD 22



REPUBLIC
OF IRELAND
6 Hotels

UNITED
KINGDOM
47 Hotels

NETHERLANDS
13 Hotels

BELGIUM
2 Hotels

GERMANY
61 Hotels
+ 2 Hotel projects

POLAND
4 Hotels

CZECH REP.
1 Hotel

AUSTRIA
10 Hotels

HUNGARY
2 Hotels

ROMANIA
1 Hotel

SWITZERLAND
3 Hotels

ITALY
6 Hotels

SPAIN
17 Hotels

GREECE
2 Hotels

CYPRUS
8 Hotels

ISRAEL
38 Hotels

Germany

- Leonardo Hotels
- Leonardo Royal Hotels
- Leonardo Boutique Hotels
- NYX Hotels by Leonardo Hotels



Leonardo Hamburg Altona



AT A GLANCE

- Hotel City**
Hamburg
- Hotel Address**
Beerenweg 1A, 22761 Hamburg
- Nearby Landmarks/Transport Links**
Visit the beautiful Elbstrand, Tierpark Hagenbeck, the Trabrennbahn, the unique Stage Theater Neue Flora and the cool artist scene district Altona. Other features of the city are easily accessible by public transport, your own car and even on foot.
- Number of Bedrooms**
191
- Food and Beverage Information**
Restaurant and Bar
- Number of Meeting Rooms**
2
- Meeting Room Capacity Max**
50
- Hotel Contact Information**
leonardo-hotels.com
info.hamburgaltona@leonardo-hotels.com
reservations.hamburg@leonardo-hotels.com

Hotel Berlin Köpenick by Leonardo Hotels



AT A GLANCE

- Hotel City**
Berlin
- Hotel Address**
Grünauer Straße 1, 12557 Berlin
- Nearby Landmarks/Transport Links**
Located directly on the banks of the river Dahme and opposite the Schlossinsel and the historic Köpenick castle, this hotel is the perfect place for those who want to experience Berlin live, but also leave behind the hustle and bustle of the big city at the end of the day.
- Number of Bedrooms**
190
- Food and Beverage Information**
Restaurant and bar with riverside terrace
- Number of Meeting Rooms**
14
- Meeting Room Capacity Max**
300
- Hotel Contact Information**
leonardo-hotels.com
info.berlinkoepenick@leonardo-hotels.com

Leonardo Offenbach Frankfurt



AT A GLANCE

Hotel City
Frankfurt

Hotel Address
Kaiserleistraße 39, 63067 Offenbach am Main

Nearby Landmarks/Transport Links
From the Stadel museum and the Cathedral of St Bartholomew to the famous Kleinmarkthalle and Old Opera House, the city truly does have something for everyone.

Number of Bedrooms
238

Food and Beverage Information
Restaurant and Bar

Number of Meeting Rooms
5

Meeting Room Capacity Max
55

Hotel Contact Information
leonardo-hotels.com
info.offenbach@leonardo-hotels.com
reservations.frankfurt@leonardo-hotels.com

Leonardo Hannover



AT A GLANCE

Hotel City
Hannover

Hotel Address
Tiergartenstraße 117, 30559 Hannover

Nearby Landmarks/Transport Links
The hotel ideally located a short walk from the tram station, which offers a direct connection to the centre of the city.

Number of Bedrooms
178

Food and Beverage Information
Restaurant and Bar

Number of Meeting Rooms
8

Meeting Room Capacity Max
200

Hotel Contact Information
leonardo-hotels.com
info.hannover@leonardo-hotels.com
reservations.hannover@leonardo-hotels.com

Leonardo Eschborn Frankfurt



AT A GLANCE

Hotel City
Eschborn

Hotel Address
Kölner Straße 6, 65760 Eschborn

Nearby Landmarks/Transport Links
Guests will benefit from the convenient location, close to the S-Bahn Eschborn Süd with a good connection to Frankfurt city centre and the Fairground and with direct access to the highway A66 and Frankfurt International Airport, the families and weekenders will enjoy Frankfurt Eschborn for its the direct location at the feet of the Taunus mountain range.

Number of Bedrooms
234

Food and Beverage Information
Restaurant and Bar

Number of Meeting Rooms
3

Meeting Room Capacity Max
45

Hotel Contact Information
leonardo-hotels.com
info.eschborn@leonardo-hotels.com
reservations.frankfurt@leonardo-hotels.com

Leonardo Esslingen

Opening Winter 2023



AT A GLANCE

Hotel City
Esslingen

Hotel Address
Grabbrunnenstraße 19, 73728 Esslingen

Nearby Landmarks/Transport Links
With the direct connection to Stuttgart city center, the airport as well as the trade fair center, all important places in the area are easily accessible. Located in the heart of the city, the roof terrace offers a picturesque backdrop in summer, with views of the old town and nature.

Number of Bedrooms
150

Food and Beverage Information
Restaurant, Bar and Lounge

Number of Meeting Rooms
5

Meeting Room Capacity Max
130

Hotel Contact Information
reservations.southwest@leonardo-hotels.com
events.southwest@leonardo-hotels.com

Leonardo Frankfurt City South



AT A GLANCE

Hotel City
Frankfurt

Hotel Address
Isenburger Schneise 40, 60528 Frankfurt

Nearby Landmarks/Transport Links
When it's time to venture out, you'll find the Deutsche Bank Park, home to Eintracht Frankfurt FC, close to the hotel and the city's many other attractions including Mainhattan, the central business district, in easy reach.

Number of Bedrooms
295

Food and Beverage Information
Da Vinci Restaurant and St George Bar

Number of Meeting Rooms
12

Meeting Room Capacity Max
450

Hotel Contact Information
leonardo-hotels.com
info.frankfurtcitysouth@leonardo-hotels.com
reservations.frankfurt@leonardo-hotels.com

Leonardo Dortmund



AT A GLANCE

Hotel City
Dortmund

Hotel Address
Burgwall 11-13, 44135 Dortmund

Nearby Landmarks/Transport Links
Close to several bus, underground and S-Bahn stops, the hotel is also perfectly placed for guests who want to spend time in the city, and many of Dortmund's main attractions are all within easy walking distance. The Dortmund U-Tower, a former brewery building turned cultural centre, is a great place to visit, and the city's charming Old Town and Alter Markt are also well worth a wander. Football fans won't want to miss Signal Iduna Park either, and you can reach the famous stadium by underground in just 10 minutes from the hotel.

Number of Bedrooms
190

Food and Beverage Information
Restaurant and Bar

Number of Meeting Rooms
5

Meeting Room Capacity Max
144

Hotel Contact Information
leonardo-hotels.com
info.dortmund@leonardo-hotels.com
res.dortmund@leonardo-hotels.com

Leonardo Düsseldorf City Center



AT A GLANCE

Hotel City
Düsseldorf

Hotel Address
Ludwig-Erhard-Allee 3, 40227 Dusseldorf

Nearby Landmarks/Transport Links
Just a few minutes' walk from the city park, Leonardo Hotel Düsseldorf City Center is ideally situated. The nearby underground station provides a rapid connection to other popular areas of the city like the famous Königsallee shopping street, the beautiful Rhine Promenade and the charming market in Carlsplatz, close to the Old Town. Moreover, the exhibition ground Messe Düsseldorf is just 15 minutes away by train, you can reach Düsseldorf International Airport in 20 minutes.

Number of Bedrooms
134

Food and Beverage Information
Ludwig's Restaurant and Bar

Number of Meeting Rooms
8

Meeting Room Capacity Max
80

Hotel Contact Information
leonardo-hotels.com
info.duesseldorfcitycenter@leonardo-hotels.com
reservations.duesseldorfcitycenter@leonardo-hotels.com



Leonardo Hannover Airport



AT A GLANCE

Hotel City
Hannover

Hotel Address
Petzelstraße 60, 30668 Hannover

Nearby Landmarks/Transport Links
Accessing the centre of Hannover is easy, with the nearby Hannover Flughafen S-Bahn station offering direct access to the city centre as well as the Hannover Messe exhibition ground.

Number of Bedrooms
214

Food and Beverage Information
Prasserie restaurant and Bar

Number of Meeting Rooms
13

Meeting Room Capacity Max
180

Hotel Contact Information
leonardo-hotels.com
info.hannoverairport@leonardo-hotels.com
reservations.hannoverairport@leonardo-hotels.com

Leonardo Mannheim-Ladenburg



AT A GLANCE

Hotel City
Mannheim

Hotel Address
Benzstraße 21, 68526 Ladenburg

Nearby Landmarks/Transport Links
The Leonardo Hotel Mannheim-Ladenburg is located in the charming Roman town of Ladenburg, directly between the city of Mannheim and the towns of Heidelberg and Speyer, right on the Palatinate wine route. Close to the A5 and A6 motorways, and just a 10-minute walk to the train and Sbahn station, the hotel is perfect for anyone who wants to explore the region and enjoy spending time in any of the neighbouring towns and cities, whilst the hotel’s excellent conference facilities are also perfect for business guests looking to visit for work.

Number of Bedrooms
128

Food and Beverage Information
Restaurant and Leo Lounge Bar

Number of Meeting Rooms
7

Meeting Room Capacity Max
200

Hotel Contact Information
leonardo-hotels.com
info.mannheimladenburg@leonardo-hotels.com
reservations.southwest@leonardo-hotels.com

Leonardo Hamburg City Nord



AT A GLANCE

Hotel City
Hamburg

Hotel Address
Mexikoring 1, 22297 Hamburg

Nearby Landmarks/Transport Links
Leonardo Hamburg City Nord is just a 10-minute drive from Hamburg airport, and 20 minutes to the city centre and harbour on the S1 line, which stops at Hamburg Rübenkamp, a short walk from the hotel. The area’s attractions are nearby, with Hamburg’s warehouse district, Speicherstadt, and the city’s Miniatur Wonderland, home to the world’s largest model railway, all within easy reach of the hotel.

Number of Bedrooms
182

Food and Beverage Information
Windsor Restaurant and Störtebecker Bar

Number of Meeting Rooms
7

Meeting Room Capacity Max
200

Hotel Contact Information
leonardo-hotels.com
info.hamburgcitynord@leonardo-hotels.com
reservations.hamburg@leonardo-hotels.com

Leonardo Berlin Mitte



AT A GLANCE

Hotel City
Berlin

Hotel Address
Bertolt-Brecht-Platz 4, 10117 Berlin

Nearby Landmarks/Transport Links
Brandenburg Gate, Potsdamer Platz, Shopping district “Friedrichstraße” and historic square “Gendarmenmarkt”

Number of Bedrooms
309

Food and Beverage Information
Breakfast restaurant and bar

Number of Meeting Rooms
3

Meeting Room Capacity Max
100

Hotel Contact Information
leonardo-hotels.com
info.berlinmitte@leonardo-hotels.com
reservations.berlin@leonardo-hotels.com

Leonardo Augsburg



AT A GLANCE

- Hotel City**
Augsburg
- Hotel Address**
Langenmantelstraße 31, 86153 Augsburg
- Nearby Landmarks/Transport Links**
The hotel location, in the Stadtjägerviertel neighbourhood, is an added value for tourists and for business travellers business. With a convenient tram stop a few minutes away, visiting the Augsburg city centre and its many popular sights, including the Golden Hall in the city hall, the Mozart House and Schaezler Palace.
- Number of Bedrooms**
235
- Food and Beverage Information**
Restaurant and Bar
- Number of Meeting Rooms**
8
- Meeting Room Capacity Max**
300
- Hotel Contact Information**
leonardo-hotels.com
info.augsburg@leonardo-hotels.com
reservations.augsburg@leonardo-hotels.com



Leonardo Hamburg-Stillhorn



AT A GLANCE

- Hotel City**
Hamburg
- Hotel Address**
Stillhorner Weg 40, 21109 Hamburg
- Nearby Landmarks/Transport Links**
Should you wish to venture out, the newly built Hamburg-Hafen City neighbourhood is just 15 minutes' drive from the hotel and is home to the spectacular Elbphilharmonie concert hall.
- Number of Bedrooms**
152
- Food and Beverage Information**
Senator Restaurant and Bar
- Number of Meeting Rooms**
12
- Meeting Room Capacity Max**
200
- Hotel Contact Information**
leonardo-hotels.com
info.hamburgstillhorn@leonardo-hotels.com
reservations.hamburg@leonardo-hotels.com

Leonardo Dresden Altstadt



AT A GLANCE

- Hotel City**
Dresden
- Hotel Address**
Magdeburger Straße 1A, 01067 Dresden
- Nearby Landmarks/Transport Links**
With a direct connection to both the city's beloved Altstadt and the hip Neustadt neighbourhood, you will also only be a 10-minute walk to the waterside Wiese am Elbweg along the bank of the River Elbe, and a three-minute drive from the International Congress Centre and the Messe Dresden convention centre.
- Number of Bedrooms**
162
- Food and Beverage Information**
Restaurant and Bar
- Number of Meeting Rooms**
2
- Meeting Room Capacity Max**
60
- Hotel Contact Information**
leonardo-hotels.com
info.dresden@leonardo-hotels.com
reservations.dresden@leonardo-hotels.com

Leonardo Bad Kreuznach



AT A GLANCE

Hotel City
Bad Kreuznach

Hotel Address
Otto-Meffert-Straße 2, 55543 Bad Kreuznach

Nearby Landmarks/Transport Links
The hotel's location in the commercial area is ideal if you're visiting for business, with the Meffert Farben AG and the Michelin Reifenwerke both nearby.

Number of Bedrooms
91

Food and Beverage Information
La Cave Restaurant & Winebar and Bar

Number of Meeting Rooms
5

Meeting Room Capacity Max
400

Hotel Contact Information
leonardo-hotels.com
info.badkreuznach@leonardo-hotels.com
reservations.frankfurt@leonardo-hotels.com



Leonardo Mannheim City Center



AT A GLANCE

Hotel City
Mannheim

Hotel Address
N6 3, 68161 Mannheim

Nearby Landmarks/Transport Links
The shops, museums and restaurants of the "Quadratstadt" stretch out in all directions from the hotel, with the Jesuit church, the university and market square all close by. The Planken shopping street is a few steps from the hotel, leading out to the romanesque water tower, the gardens of Friedrichsplatz, and further afield to Luisenpark, renowned as one of the most beautiful parks in Germany.

Number of Bedrooms
148

Food and Beverage Information
La Terrazza Restaurant and Optimus bar

Number of Meeting Rooms
4

Meeting Room Capacity Max
160

Hotel Contact Information
leonardo-hotels.com
info.mannheimcitycenter@leonardo-hotels.com
reservations.southwest@leonardo-hotels.com

Leonardo Köln Bonn Airport



AT A GLANCE

Hotel City
Cologne

Hotel Address
Waldstraße 255, 51147 Cologne

Nearby Landmarks/Transport Links
Located just 300m from Cologne Bonn Airport, and within easy reach of the city centre, the Leonardo Hotel Köln Bonn Airport is a fantastic place to stay whether you're visiting on business, ahead of a flight connection, or exploring Cologne itself.

Number of Bedrooms
177

Food and Beverage Information
Vivaldi Restaurant and Münchhausen Bar

Number of Meeting Rooms
7

Meeting Room Capacity Max
120

Hotel Contact Information
leonardo-hotels.com
info.koelnbonnairport@leonardo-hotels.com
reservations.nrw@leonardo-hotels.com

Leonardo
Weimar



AT A GLANCE

Hotel City

Weimar

Hotel Address

Belvederer Allee 25, 99425 Weimar

Nearby Landmarks/Transport Links

The hotel places you within a few minutes’ walk of the city’s iconic old town, including sights such as the Bauhaus Museum, the Schloss Weimar palace and the beautiful 18th-century Park an der Ilm, part of the city’s UNESCO World Heritage site, perfect to explore by bike, with cycle hire available at the hotel reception.

Number of Bedrooms

294

Food and Beverage Information

Restaurant “Esplanade” and bar “Kolonnadenbar”

Number of Meeting Rooms

12

Meeting Room Capacity Max

450

Hotel Contact Information

leonardo-hotels.com
info.weimar@leonardo-hotels.com
reservations.weimar@leonardo-hotels.com



Leonardo
Düsseldorf Airport - Ratingen



AT A GLANCE

Hotel City

Düsseldorf

Hotel Address

Broichhofstraße 3, 40880 Dusseldorf

Nearby Landmarks/Transport Links

Düsseldorf is just 15-20 minutes away by car, bringing the sights of the city centre within easy reach.

Number of Bedrooms

199

Food and Beverage Information

Da Vinci Restaurant and Bar

Number of Meeting Rooms

5

Meeting Room Capacity Max

200

Hotel Contact Information

leonardo-hotels.com
info.ratingen@leonardo-hotels.com
reservations.nrw@leonardo-hotels.com

Leonardo
Mönchengladbach



AT A GLANCE

Hotel City

Mönchengladbach

Hotel Address

Speicker Straße 49, 41061 Monchengladbach

Nearby Landmarks/Transport Links

From the hotel, enjoy the views across to Mönchengladbach’s beautiful church, head out and visit the Old Town, just a few minutes walk away, or enjoy the convenient connections to the Düsseldorf and Cologne exhibition and convention centres.

Number of Bedrooms

128

Food and Beverage Information

Límage restaurant and Ciel bar

Number of Meeting Rooms

4

Meeting Room Capacity Max

120

Hotel Contact Information

leonardo-hotels.com
info.mgl@leonardo-hotels.com
res.mgl@leonardo-hotels.com

Leonardo Munich City South



AT A GLANCE

Hotel City

Munich

Hotel Address

Hofmannstraße 1, 81379 Munich

Nearby Landmarks/Transport Links

If you want to venture out, there are metro, tram and bus stops within easy walking distance that will whisk you into the city centre, and thanks to plenty of private underground parking available onsite, driving is also easy. What's more, attractions including Hellabrunn Zoo, Munich Golf Club and Floßländer, a river surfing spot, are all in easy reach of Leonardo Hotel Munich City South.

Number of Bedrooms

159

Food and Beverage Information

FOODS Restaurant and Bar

Number of Meeting Rooms

3

Meeting Room Capacity Max

150

Hotel Contact Information

leonardo-hotels.com

info.munichcitysouth@leonardo-hotels.com

reservations.muenchen@leonardo-hotels.com

Leonardo Völklingen-Saarbrücken



AT A GLANCE

Hotel City

Völklingen

Hotel Address

Kühlweinstrasse 105, 66333 Völklingen

Nearby Landmarks/Transport Links

The hotel is located on the edge of the Bürgerpark and just a short drive from the centre of Saarland's capital, Saarbrücken. In an hour's drive from the hotel, you can be in Metz in France or in Luxembourg City, but there is plenty to explore on your doorstep including the remarkable UNESCO World Heritage site at the Völklingen Ironworks, the Saar Loop at Mettlach, and the many natural wonders of Saarland's hiking trails and cycle paths.

Number of Bedrooms

98

Food and Beverage Information

Vitruv Restaurant and Bar

Number of Meeting Rooms

3

Meeting Room Capacity Max

65

Hotel Contact Information

leonardo-hotels.com

info.voelklingen@leonardo-hotels.com

reservations.southwest@leonardo-hotels.com

Leonardo Wolfsburg City Center



AT A GLANCE

Hotel City

Wolfsburg

Hotel Address

Rathausstraße 1, 38440 Wolfsburg

Nearby Landmarks/Transport Links

Famous for being the birthplace of Volkswagen, Wolfsburg is a centre of science and innovation that celebrates its industrial heritage by looking to the future, with the Autostadt theme park, the AutoMuseum and the futuristic Phaeno Science Centre designed by Zaha Hadid all popular attractions.

Number of Bedrooms

343

Food and Beverage Information

Bar (serving food)

Number of Meeting Rooms

7

Meeting Room Capacity Max

220

Hotel Contact Information

leonardo-hotels.com

info.wolfsburg@leonardo-hotels.com

res.wolfsburg@leonardo-hotels.com



Leonardo Hamburg Elbbrücken



AT A GLANCE

Hotel City
Hamburg

Hotel Address
Sieldeich 5, 20539 Hamburg

Nearby Landmarks/Transport Links
Many of Hamburg’s sights are nearby, with the city centre just a ten-minute drive away, and the CCH congress centre easily accessible on the S31 line from Hamburg-Veddel station, a short walk from the hotel.

Number of Bedrooms
93

Food and Beverage Information
Limerick restaurant and Shannon bar

Number of Meeting Rooms
3

Meeting Room Capacity Max
100

Hotel Contact Information
leonardo-hotels.com
info.elbbruecken@leonardo-hotels.com
reservations.hamburg@leonardo-hotels.com

Leonardo Heidelberg-Walldorf



AT A GLANCE

Hotel City
Heidelberg

Hotel Address
Roter Straße 2, 69190 Walldorf

Nearby Landmarks/Transport Links
The hotel is just one kilometre from the centre of Walldorf and a 15-minute drive into nearby Heidelberg. Business guests will find the Leonardo Heidelberg-Walldorf perfectly placed for visiting nearby companies, with the headquarters of SAP, RealTech AG and Heidelberger Druckmaschinen close by.

Number of Bedrooms
161

Food and Beverage Information
Walldorf restaurant and Leo bar

Number of Meeting Rooms
8

Meeting Room Capacity Max
199

Hotel Contact Information
leonardo-hotels.com
info.heidelberg@leonardo-hotels.com
reservations.southwest@leonardo-hotels.com

Leonardo Köln



AT A GLANCE

Hotel City
Cologne

Hotel Address
Waldecker Straße 11-15, 51065 Köln

Nearby Landmarks/Transport Links
Perfectly located both for tourists and those visiting this German city on business, the hotel is just a 4-minute drive from the Koelnmesse exhibition centre and a 200m walk from a tram stop, which will whisk you into the city centre and its many popular sights, including Cologne Cathedral and the Old Market. What’s more, the RheinEnergieStadion, home to FC Köln, is just 8km away, and Cologne Airport is a short 15km journey from the hotel.

Number of Bedrooms
165

Food and Beverage Information
Vinci Restaurant and Vinci Bar

Number of Meeting Rooms
9

Meeting Room Capacity Max
190

Hotel Contact Information
leonardo-hotels.com
info.koeln@leonardo-hotels.com
reservations.nrw@leonardo-hotels.com



Leonardo Nürnberg



AT A GLANCE

Hotel City
Nuremberg

Hotel Address
Zufuhrstraße 22, 90443 Nuremberg

Nearby Landmarks/Transport Links
Nuremberg’s main attractions are all within easy reach of the hotel, including the stunning UNESCO site of the Old Town and the Art Nouveau masterpiece State Theatre. Getting to the hotel from the airport and Nuremberg’s exhibition centres is easy, with the airport just 20-minutes away by car or public transport.

Number of Bedrooms
102

Food and Beverage Information
Bar/ Terrace

Number of Meeting Rooms
1

Meeting Room Capacity Max
25

Hotel Contact Information
leonardo-hotels.com
info.nuernbergcity@leonardo-hotels.com
reservations.nuernberg@leonardo-hotels.com

Leonardo Munich City Olympiapark



AT A GLANCE

Hotel City
Munich

Hotel Address
Dachauer Straße 199, 80637 Munich

Nearby Landmarks/Transport Links
There’s plenty to do outside the hotel, too. The Olympiapark is home to many popular concerts throughout the year, as well as Sea Life Munich, which your little ones will love. For attractions further afield, purchase public transport (MVV) ticket from the front desk and you’ll be in the centre of Munich in a few minutes. Those arriving by car can take advantage of the underground parking spaces and two e-filling stations available to guests. For stylish, memorable accommodation in Germany, choose Leonardo Hotel Munich City Olympiapark.

Number of Bedrooms
196

Food and Beverage Information
Restaurant and Bar

Number of Meeting Rooms
-

Meeting Room Capacity Max
-

Hotel Contact Information
leonardo-hotels.com
info.cityolympiapark@leonardo-hotels.com
reservations.muenchen@leonardo-hotels.com

Leonardo Munich City East



AT A GLANCE

Hotel City
Munich

Hotel Address
Carl-Wery-Straße 39, 81739 Munich

Nearby Landmarks/Transport Links
With plenty of car parking spaces on site, as well as an e-filling station for electric vehicles, the hotel is a perfect spot for those who wish to explore the beautiful Bavarian countryside. And with the nearest metro station just three minutes’ walk away, the Leonardo Munich City East is also well-connected with Munich city centre, where visitors can explore sights including Marienplatz, Nymphenburg Palace and the English Garden.

Number of Bedrooms
215

Food and Beverage Information
Atrium Restaurant and Bar

Number of Meeting Rooms
4

Meeting Room Capacity Max
200

Hotel Contact Information
leonardo-hotels.com
info.munichcityeast@leonardo-hotels.com
reservations.muenchen@leonardo-hotels.com



Leonardo Berlin



AT A GLANCE

Hotel City
Berlin

Hotel Address
Wilmerdorfer Straße 32, 10585 Berlin

Nearby Landmarks/Transport Links
The popular shopping mile Wilmerdorfer Straße and an underground station are right on your doorstep.

Number of Bedrooms
274

Food and Beverage Information
Breakfast restaurant and bar “Wilma’s”

Number of Meeting Rooms
1

Meeting Room Capacity Max
30

Hotel Contact Information
leonardo-hotels.com
info.berlin@leonardo-hotels.com
reservations.berlin@leonardo-hotels.com

Leonardo München City West



AT A GLANCE

Hotel City
Munich

Hotel Address
Brudermühlstraße 33, 81371 Munich

Nearby Landmarks/Transport Links
Should you wish to venture out and explore the Bavarian capital, you’ll find the world-famous Hellabrunn Zoo, Flaucher Park and the river Isar all a short walk away. Theresienwiese, the location of the Oktoberfest beer festival, and the Audi Dome, home to the Bayern Munich basketball team, are also both easily reached via public transport. When you are tired from all the sightseeing, you can return to the comfort of Leonardo München City West.

Number of Bedrooms
98

Food and Beverage Information
Restaurant (breakfast only)

Number of Meeting Rooms
2

Meeting Room Capacity Max
16

Hotel Contact Information
leonardo-hotels.com
info.muenchenwest@leonardo-hotels.com
reservations.muenchen@leonardo-hotels.com

Leonardo Aachen



AT A GLANCE

Hotel City
Aachen

Hotel Address
Krefelder Straße 221, 52070 Aachen

Nearby Landmarks/Transport Links
Located just north of Aachen’s historic city centre, the Leonardo Aachen is ideally situated whether you’re visiting this charming German spa city for business, sightseeing or to attend a sporting event. Both the Hauptstadion equestrian stadium, home to the annual World Equestrian Festival, and Soers Sportpark’s New Tivoli football stadium are close.

Number of Bedrooms
99

Food and Beverage Information
Primavera restaurant and Vitruv Bar

Number of Meeting Rooms
1

Meeting Room Capacity Max
40

Hotel Contact Information
leonardo-hotels.com
info.aachen@leonardo-hotels.com
reservations.nrw@leonardo-hotels.com

Leonardo Heidelberg City Center



AT A GLANCE

Hotel City
Heidelberg

Hotel Address
Bergheimer Straße 63, 69115 Heidelberg

Nearby Landmarks/Transport Links
Close to the peaceful park by the river Neckar, and with stunning views over the romantic Old Town, the hotel is within easy walking distance of the historic city centre while still feeling quiet enough for a relaxing break.

Number of Bedrooms
124

Food and Beverage Information
Restaurant (breakfast only) and Bar

Number of Meeting Rooms
-

Meeting Room Capacity Max
-

Hotel Contact Information
leonardo-hotels.com
info.heidelberg@leonardo-hotels.com
reservations.southwest@leonardo-hotels.com

Leonardo Karlsruhe



AT A GLANCE

Hotel City
Karlsruhe

Hotel Address
Ettlinger Straße 23, 76137 Karlsruhe

Nearby Landmarks/Transport Links
There's plenty to do outside the hotel, too. Leonardo Karlsruhe is conveniently located near Karlsruhe's major sights including Karlsruhe Palace, Karlsruhe Zoo, Schwarzwaldhalle exhibition hall and Therme Vierordtbad.

Number of Bedrooms
147

Food and Beverage Information
Scala restaurant and Leo Lounge Bar

Number of Meeting Rooms
9

Meeting Room Capacity Max
300

Hotel Contact Information
leonardo-hotels.com
info.karlsruhe@leonardo-hotels.com
reservations.southwest@leonardo-hotels.com



Leonardo Frankfurt City Center



AT A GLANCE

Hotel City
Frankfurt

Hotel Address
Münchener Straße 59, 60329 Frankfurt

Nearby Landmarks/Transport Links
Those travelling for business can easily access the popular Messe Frankfurt convention centre, or, for some downtime, head to the popular Zeil shopping boulevard, home to luxury brands and exclusive boutiques as well as restaurants and street food markets.

Number of Bedrooms
108

Food and Beverage Information
-

Number of Meeting Rooms
-

Meeting Room Capacity Max
-

Hotel Contact Information
leonardo-hotels.com
info.frankfurtcity@leonardo-hotels.com
reservations.frankfurt@leonardo-hotels.com

Leonardo München City Center



AT A GLANCE

Hotel City
Munich

Hotel Address
Senefelderstraße 4, 80336 Munich

Nearby Landmarks/Transport Links
At just 30m from Munich's main train station, the hotel is also superbly situated for access to the airport, as well as the Messe München exhibition centre. There's also underground parking should you be arriving by car. Most importantly, though, Munich's many famous sights, from the medieval Marienplatz square to Theresienwiese, the official home of the Oktoberfest beer festival, are within easy walking distance, making Leonardo Hotel München City Center the perfect base for exploring this vibrant German city.

Number of Bedrooms
80

Food and Beverage Information
Restaurant (breakfast only) and Bar

Number of Meeting Rooms
-

Meeting Room Capacity Max
-

Hotel Contact Information
leonardo-hotels.com
info.muenchencity@leonardo-hotels.com
reservations.muenchen@leonardo-hotels.com

Leonardo Hamburg Airport



AT A GLANCE

Hotel City
Hamburg

Hotel Address
Langenhorner Chaussee 183, 22415 Hamburg

Nearby Landmarks/Transport Links
Located just 1.5 km from Hamburg airport and 14 km north of the city centre, the Leonardo Hamburg Airport is ideally placed whether you're visiting the German city on business or for pleasure.

Number of Bedrooms
147

Food and Beverage Information
Restaurant and Bar

Number of Meeting Rooms
7

Meeting Room Capacity Max
110

Hotel Contact Information
leonardo-hotels.com
info.hamburgair@leonardo-hotels.com
reservations.hamburg@leonardo-hotels.com

Leonardo Munich Arabellapark



AT A GLANCE

Hotel City
Munich

Hotel Address
Effnerstraße 99, 81925 Munich

Nearby Landmarks/Transport Links
Located in Munich's leafy Bogenhausen district, Leonardo Munich Arabellapark is the perfect accommodation base for business travellers and holidaymakers wanting to experience the best of Munich from a peaceful residential base.

Number of Bedrooms
152

Food and Beverage Information
Ludwig Stüberl Restaurant and Bar

Number of Meeting Rooms
5

Meeting Room Capacity Max
300

Hotel Contact Information
leonardo-hotels.com
info.arabellapark@leonardo-hotels.com
reservations.muenchen@leonardo-hotels.com

Leonardo Munich City North



AT A GLANCE

Hotel City
Munich

Hotel Address
Dachauer Straße 421, 80992 Munich

Nearby Landmarks/Transport Links
There's plenty to do and see in the local area, too. Make the most of the hotel's peaceful residential setting by mingling with locals at the nearby restaurants and bars or, for something a little closer to nature, the manicured Botanical Garden is within walking distance. Getting to the hotel is easy. Moosach station is just a five-minute walk away, from where guests can take a direct train to Munich Airport Franz Josef Strauß. Leonardo Hotel Munich City North is easily accessible from the motorway for those travelling by car, and the hotel can arrange private underground parking for guests, too. For all the comforts of home combined with hotel style and sophistication, stay at Leonardo Munich City North.

Number of Bedrooms
80

Food and Beverage Information
Restaurant (breakfast only) and Bar

Number of Meeting Rooms
-

Meeting Room Capacity Max
-

Hotel Contact Information
leonardo-hotels.com
info.munichcitynorth@leonardo-hotels.com
reservations.muenchen@leonardo-hotels.com



Leonardo Inn Hamburg Airport



AT A GLANCE

Hotel City
Hamburg

Hotel Address
Zeppelinstraße 12, 22335 Hamburg

Nearby Landmarks/Transport Links
The train and bus station are a mere 500m away, meaning access to the city centre is direct and stress-free. Should you be visiting Hamburg on business, the Hamburg Messe, where many of the city’s major conferences take place, is just 12km away.

Number of Bedrooms
37

Food and Beverage Information
-

Number of Meeting Rooms
-

Meeting Room Capacity Max
-

Hotel Contact Information
leonardo-hotels.com
info.innhamburgair@leonardo-hotels.com
reservations.hamburg@leonardo-hotels.com

Leonardo Heidelberg



AT A GLANCE

Hotel City
Heidelberg

Hotel Address
Pleikartsförster Straße 101, 69124 Heidelberg

Nearby Landmarks/Transport Links
Only a few minutes from Heidelberg Central Train Station, the castle and the Old Town, the hotel is set in a peaceful, green area that offers a welcome break from the hustle and bustle of downtown Heidelberg whilst still being conveniently close to the main attractions.

Number of Bedrooms
169

Food and Beverage Information
Galerie restaurant and Bar

Number of Meeting Rooms
6

Meeting Room Capacity Max
260

Hotel Contact Information
leonardo-hotels.com
info.heidelbergkirchheim@leonardo-hotels.com
reservations.southwest@leonardo-hotels.com

Leonardo Residenz München



AT A GLANCE

Hotel City
Munich

Hotel Address
Heimgartenstraße 14, 81539 Munich

Nearby Landmarks/Transport Links
Situating near the Säbener Strasse, the training ground of FC Bayern Munich, the hotel is close to many of Munich’s sights. The Deutsches Museum and the Hauptbahnhof are both within easy reach, and businesses such as Nokia Networks and Generali are just a short walk away. Guests travelling to Germany by car can take advantage of Leonardo Hotel & Residenz München’s 70 car parking spaces. If you’re looking for a hotel in Munich for short or long-term accommodation, choose Leonardo Residenz München.

Number of Bedrooms
270

Food and Beverage Information
La Locanda Restaurant and Bar

Number of Meeting Rooms
1

Meeting Room Capacity Max
12

Hotel Contact Information
leonardo-hotels.com
info.muenchenresidenz@leonardo-hotels.com
reservations.muenchen@leonardo-hotels.com



Leonardo Berlin
KU'DAMM



AT A GLANCE

Hotel City
Berlin

Hotel Address
Kurfürstendamm 35, 10719 Berlin

Nearby Landmarks/Transport Links
Explore the shopping district “Ku’damm” with iconic department store “KaDeWe”, the historic church “Gedächtniskirche” and of course, the nearby zoo.

Number of Bedrooms
163

Food and Beverage Information
Breakfast restaurant

Number of Meeting Rooms
-

Meeting Room Capacity Max
-

Hotel Contact Information
leonardo-hotels.com
info.berlinkudamm@leonardo-hotels.com
reservations.berlin@leonardo-hotels.com



Leonardo Royal
Cologne-Bonn Airport



AT A GLANCE

Hotel City
Cologne

Hotel Address
Joseph-Broicher-Straße 11, 51145 Cologne

Nearby Landmarks/Transport Links
The hotel is located close to Cologne-Bonn Airport, with a free shuttle service. The nearby motorway is the perfect connection to other areas of Cologne or even to nearby economic hotspots such as Düsseldorf or Bonn.

Number of Bedrooms
250

Food and Beverage Information
Levantine Restaurant and bar

Number of Meeting Rooms
6

Meeting Room Capacity Max
232

Hotel Contact Information
leonardo-hotels.com
info.royalcolognebonnairport@leonardo-hotels.com



AT A GLANCE

Hotel City

Munich

Hotel Address

Moosacher Straße 90, 80809 Munich

Nearby Landmarks/Transport Links

When you're ready to venture outside, you'll discover the Oberwiesenfeld U-Bahn station just 50m from the hotel door, putting the city centre and airport in easy reach. Combine that with proximity to some of Munich's top attractions including BMW Welt and Sea Life as well as companies like Amazon, BMW and Knorr, and Leonardo Royal Hotel Munich has everything you could possibly need from a Munich hotel.

Number of Bedrooms

424

Food and Beverage Information

Vitruv Restaurant and Leo90 Bar

Number of Meeting Rooms

13

Meeting Room Capacity Max

792

Hotel Contact Information

leonardo-hotels.com

info.royalmunich@leonardo-hotels.com

reservations.muenchen@leonardo-hotels.com

Leonardo Royal Munich

As part of the company-wide sustainability strategy, the largest hotel of Leonardo Hotels Central Europe is currently undergoing extensive and environmentally friendly renovation. In addition to the redesign of the interior, the focus is on technical and future-oriented solutions to save valuable resources.

The reduction of waste with the help of artificial intelligence is just one of many measures.

Thanks to the renovation, the hotel, which

is located in the heart of the city, now boasts a fresh look and feel from the pen of renowned interior designer Andreas Neudahm, who focuses on durable materials, upcycling and fair production conditions.

With high ceilings, natural daylight and a spacious garden terrace, the Leonardo Royal Munich offers a tranquil atmosphere that guarantees a relaxing stay.

Be sure to visit the restaurant, which features a live cooking station where dishes are prepared in front of the guests.





Leonardo Royal Berlin Alexanderplatz



AT A GLANCE

Hotel City
Berlin

Hotel Address
Otto-Braun-Straße 90, 10249 Berlin

Nearby Landmarks/Transport Links
This four-star superior hotel, close to the Berlin TV tower, Museum Island and the famous Alexanderplatz square with shopping and dining, is a great choice, whether you're visiting the German capital for work or leisure.

Number of Bedrooms
346

Food and Beverage Information
Restaurant "Vitruv" and Lounge Bar "Leo90"

Number of Meeting Rooms
11

Meeting Room Capacity Max
550

Hotel Contact Information
leonardo-hotels.com
info.royalberlin@leonardo-hotels.com
reservations.berlin@leonardo-hotels.com



Leonardo Royal Nürnberg



AT A GLANCE

Hotel City
Nuremberg

Hotel Address
Bahnhofplatz 3, 90443 Nuremberg

Nearby Landmarks/Transport Links
The hotel is situated directly next to the main train station and thus guarantees an optimal connection to local and long-distance traffic. Located in the center of Nuremberg, it also offers pleasantly short distances to everything for which the city is famous - whether "Kaiserburg", historic Old Town or the well-known "Christkindlesmarkt". The international exhibition center of the Nuremberg Trade Fair as well as the airport can be reached by public transport in less than 15 minutes.

Number of Bedrooms
238

Food and Beverage Information
Levi Restaurant and Bar

Number of Meeting Rooms
9

Meeting Room Capacity Max
280

Hotel Contact Information
leonardo-hotels.com
info.royalnuernberg@leonardo-hotels.com
reservations.nuernberg@leonardo-hotels.com



Leonardo Royal Baden-Baden



AT A GLANCE

Hotel City
Baden-Baden

Hotel Address
Falkenstraße 2, 76530 Baden-Baden

Nearby Landmarks/Transport Links
Surrounded by scenic countryside, and less than a 10-minute walk from the town centre, the hotel places guests in easy reach of the Lichtentaler Allee and Gönneranlage Rosengarten, as well as the Caracalla Spa, Brahms House and the Festspielhaus Baden-Baden. However, there's just as much to keep visitors entertained within the Leonardo Royal Baden-Baden itself.

Number of Bedrooms
121

Food and Beverage Information
Vitruv Restaurant and Bar

Number of Meeting Rooms
6

Meeting Room Capacity Max
90

Hotel Contact Information
leonardo-hotels.com
info.royalbadenbaden@leonardo-hotels.com
reservations.southwest@leonardo-hotels.com



Leonardo Royal Frankfurt



AT A GLANCE

Hotel City
Frankfurt

Hotel Address
Mailänder Straße 1, 60598 Frankfurt

Nearby Landmarks/Transport Links
Located close to Frankfurt's stylish Sachsenhausen neighbourhood and Frankfurt South train station, and a convenient location near the A3 and A661 motorways, Leonardo Royal Frankfurt is the perfect accommodation option for business guests and holidaymakers wanting a sophisticated, comfortable place to stay in Frankfurt.

Number of Bedrooms
449

Food and Beverage Information
Vitruv restaurant and Sportsbar

Number of Meeting Rooms
15

Meeting Room Capacity Max
400

Hotel Contact Information
leonardo-hotels.com
info.royalfrm@leonardo-hotels.com
reservations.frankfurt@leonardo-hotels.com



Leonardo Royal Köln – Am Stadtwald



AT A GLANCE

Hotel City
Cologne

Hotel Address
Dürener Straße 287, 50935 Cologne

Nearby Landmarks/Transport Links
Should you wish to venture into the city, there are tram stations and bus stops just three minutes' walk from the hotel that will take you into the centre, where you'll find sights including Cologne Cathedral, the old market square and the Lanxess Arena, as well as the Koelnmesse exhibition centre.

Number of Bedrooms
150

Food and Beverage Information
Vitruv Restaurant and Leo Bar

Number of Meeting Rooms
7

Meeting Room Capacity Max
480

Hotel Contact Information
leonardo-hotels.com
info.koelnstadtwald@leonardo-hotels.com
reservations.nrw@leonardo-hotels.com



Leonardo Royal Ulm



AT A GLANCE

Hotel City
Ulm

Hotel Address
Mörikestraße 17, 89077 Ulm

Nearby Landmarks/Transport Links
A short walk takes you into the heart of the city and to popular attractions such as the tallest church tower in the world at Ulm Münster, just moments from the city centre, the central station and the banks of the Danube.

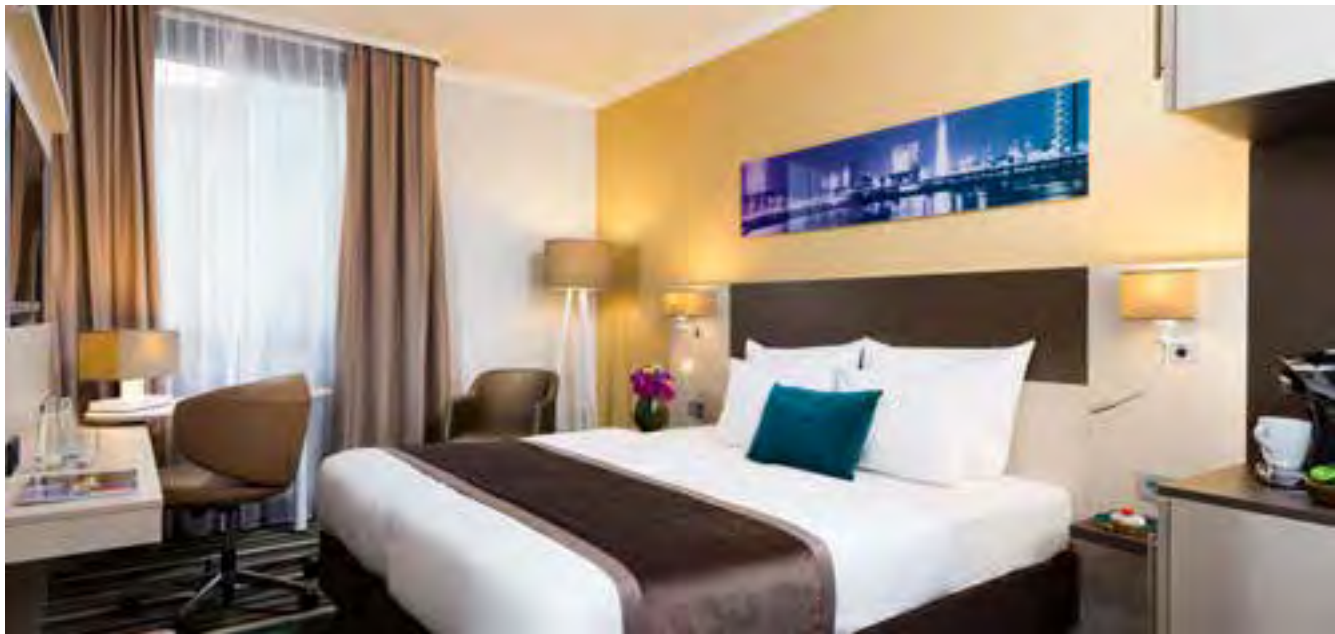
Number of Bedrooms
148

Food and Beverage Information
Vitruv Restaurant and Leo Bar

Number of Meeting Rooms
6

Meeting Room Capacity Max
150

Hotel Contact Information
leonardo-hotels.com
info.royalulm@leonardo-hotels.com
res.ulm@leonardo-hotels.com



Leonardo Royal Düsseldorf Königsallee



AT A GLANCE

Hotel City

Dusseldorf

Hotel Address

Graf-Adolf-Platz 8-10, 40213 Dusseldorf

Nearby Landmarks/Transport Links

The hotel enjoys an exclusive location in the Carlstadt district right in the heart of the city, a short hop from the stylish Königsallee 'Ko' shopping street and close to the Old Town, the K20 & K21 art galleries and the regenerated Media Harbour area. The hotel is also just a 20-minute drive from the Messe Dusseldorf trade fair and congress centre, and is right next to the Graf-Adolf-Platz subway and tram station, just three stops from the central railway station.

Number of Bedrooms

253

Food and Beverage Information

Vitruv Restaurant and Leo Bar

Number of Meeting Rooms

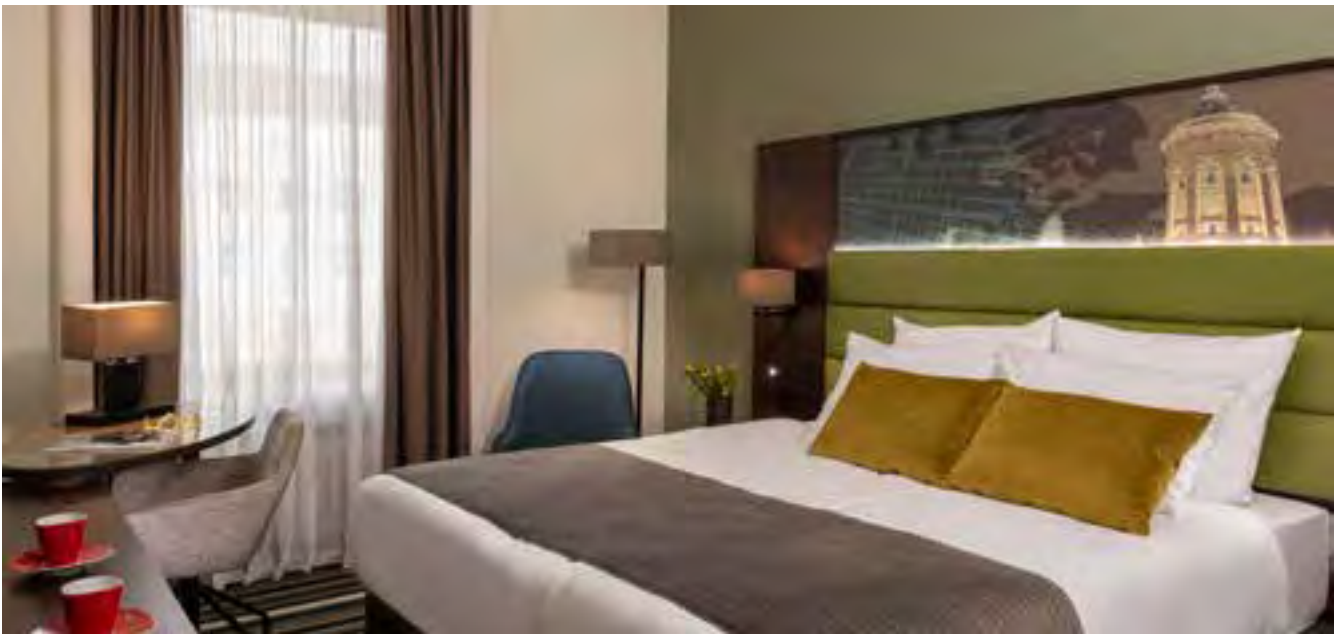
7

Meeting Room Capacity Max

180

Hotel Contact Information

leonardo-hotels.com
info.royalduesseldorf@leonardo-hotels.com
reservations.nrw@leonardo-hotels.com



Leonardo Royal Mannheim



AT A GLANCE

Hotel City

Mannheim

Hotel Address

Augustaanlage 4-8, 68165 Mannheim

Nearby Landmarks/Transport Links

Located opposite the famous Romanesque water tower and the art nouveau gardens of Friedrichsplatz, the hotel offers easy access to the rest of the city's many sites and attractions. Next to the water tower is the Rosengarten Congress Center and the Planken shopping street, which leads into the grid-like maze of avenues that gives Mannheim its nickname as "die Quadratestadt", the city of squares. The central Mannheim train station is just a 10-minute walk away and public parking is also available.

Number of Bedrooms

192

Food and Beverage Information

Vitruv Restaurant and Leo bar

Number of Meeting Rooms

9

Meeting Room Capacity Max

220

Hotel Contact Information

leonardo-hotels.com
info.royalmannheim@leonardo-hotels.com
reservations.southwest@leonardo-hotels.com

Leonardo Boutique Berlin City South



AT A GLANCE

Hotel City

Berlin

Hotel Address

Rudower Straße 80-82, 12351 Berlin

Nearby Landmarks/Transport Links

Indulge in some retail therapy at Gropius Passagen, Berlin’s biggest shopping mall, or explore the nearby multicultural Neukölln district. Leonardo Boutique Berlin City South is just a 15-minute walk from Johannisthaler Chaussee station, which serves the city centre.

Number of Bedrooms

84

Food and Beverage Information

Breakfast restaurant and bar

Number of Meeting Rooms

2

Meeting Room Capacity Max

50

Hotel Contact Information

leonardo-hotels.com
info.boutiqueberlin@leonardo-hotels.com
reservations.berlin@leonardo-hotels.com

Leonardo Boutique Munich



AT A GLANCE

Hotel City

Munich

Hotel Address

Amalienstraße 25, 80333 Munich

Nearby Landmarks/Transport Links

When you stay at Leonardo Boutique Munich, the city’s major attractions are right on your doorstep. Those wanting to get back to the nature can visit the bucolic English Garden, a ten-minute walk away, or explore the Munich Residenz and Court Garden. Cultural attractions including the Haus der Kunst and Pinakothek der Moderne art museums are on the hotel’s doorstep, or indulge in some retail therapy on Maximilianstraße, Munich’s luxury shopping boulevard. If you’re booking a hotel in Munich or are visiting Germany for work, look no further than Leonardo Boutique Hotel Munich.

Number of Bedrooms

74

Food and Beverage Information

Restaurant (breakfast only) and Bar

Number of Meeting Rooms

-

Meeting Room Capacity Max

-

Hotel Contact Information

leonardo-hotels.com
info.boutiquemuc@leonardo-hotels.com
reservations.muenchen@leonardo-hotels.com

Leonardo Boutique Düsseldorf



AT A GLANCE

Hotel City

Düsseldorf

Hotel Address

Oststraße 128, 40210 Dusseldorf

Nearby Landmarks/Transport Links

The Oststraße underground station is a short walk away and the numerous bars and restaurants of the historic downtown area are also close. Many of the city’s key attractions are within easy reach including the Altstadt, the Hofgarten Park and the regenerated Media Harbour. The Schumacher Brewery, specialising in the city’s favourite tippel, Altbier, is located directly across the street.

Number of Bedrooms

114

Food and Beverage Information

Bar

Number of Meeting Rooms

5

Meeting Room Capacity Max

80

Hotel Contact Information

leonardo-hotels.com
outiqueduesseldorf@leonardo-hotels.com
reservations.nrw@leonardo-hotels.com



NYX Hotel Hamburg



AT A GLANCE

Hotel City
Hamburg

Hotel Address
Frankenstraße 16, 20097 Hamburg

Nearby Landmarks/Transport Links
From the Hammerbrook district, all of the city’s highlights are within easy reach. It’s just ten minutes to the Central station, where shopping, entertainment and the direct connection to the harbour are at your feet.

Number of Bedrooms
236

Food and Beverage Information
Restaurant Clash and Bar

Number of Meeting Rooms
2

Meeting Room Capacity Max
64

Hotel Contact Information
info.nyxhamburg@leonardo-hotels.com



NYX Hotel Mannheim

NYX Hotel Munich



AT A GLANCE

Hotel City
Munich

Hotel Address
Hofmannstraße 2, 81379 Munich

Nearby Landmarks/Transport Links
Those wanting to go further afield can visit Hellabrunn Zoo or go wild river surfing at Floßlande, a short train ride away. Business guests are within easy reach of meeting and work destinations, such as Munich's trade fair exhibition space, reachable by taxi or public transportation.

Number of Bedrooms
225

Food and Beverage Information
Hans Im Glück Restaurant and Bar

Number of Meeting Rooms
-

Meeting Room Capacity Max
-

Hotel Contact Information
leonardo-hotels.com
info.nyxmunch@leonardo-hotels.com
reservations.muenchen@leonardo-hotels.com



AT A GLANCE

Hotel City
Mannheim

Hotel Address
F4 4-11, 68159 Mannheim

Nearby Landmarks/Transport Links
If you do want to head out into the city, the NYX Mannheim is close to everything you might want to see and do, including the university, Mannheim Palace, the Grupello pyramid in the parade grounds and The Kunsthalle Mannheim museum of modern art. The train station is just a few minutes’ walk away.

Number of Bedrooms
151

Food and Beverage Information
Clash Bar

Number of Meeting Rooms
5

Meeting Room Capacity Max
130

Hotel Contact Information
info.nyxmannheim@leonardo-hotels.com
reservations.southwest@leonardo-hotels.com

United Kingdom

- Leonardo Hotels
- Leonardo Royal Hotels
- Leonardo Boutique Hotels
- Leonardo Limited Edition
- NYX Hotels by Leonardo Hotels



Leonardo Hotel Aberdeen



AT A GLANCE

- Hotel City

Aberdeen
- Hotel Address

Union Square, Guild Street, AB11 5RG Aberdeen
- Nearby Landmarks/Transport Links

Situated on Guild Street, the hotel is just a short walk from the city’s train and bus stations, as well as leading visitor attractions such as the Aberdeen Maritime Museum, which reveals the story of the city’s long seafaring history, and Cowdray Hall, part of the Aberdeen Art Gallery, which hosts free lunchtime concerts every Thursday.
- Number of Bedrooms

203
- Food and Beverage Information

Onsite Bar and Restaurant
- Number of Meeting Rooms

5
- Meeting Room Capacity Max

80
- Hotel Contact Information

leonardohotels.co.uk
aberdeen@leonardohotels.com

Leonardo Hotel and Conference Venue Aberdeen Airport



AT A GLANCE

- Hotel City

Aberdeen
- Hotel Address

27 Argyll Road, AB21 0AF Aberdeen
- Nearby Landmarks/Transport Links

Whatever the reason for your stay, you’ll find numerous interesting attractions within easy reach of the Aberdeen Airport hotel, such as the Glen Garioch whisky distillery, the prehistoric East Aquhorthies Stone Circle and the beautiful Castle Fraser gardens and estate.
- Number of Bedrooms

147
- Food and Beverage Information

Onsite Bar and Restaurant
- Number of Meeting Rooms

5
- Meeting Room Capacity Max

400
- Hotel Contact Information

leonardohotels.co.uk
aberdeenairport@leonardohotels.com

Leonardo Hotel Belfast



AT A GLANCE

Hotel City
Belfast

Hotel Address
Great Victoria St, Belfast, BT1 6DY Belfast

Nearby Landmarks/Transport Links
Once you’re here, you’re brilliantly placed to explore this extraordinary city. The beautiful Grand Opera House, which opened in 1895, is just a one-minute walk from the door, while the carefully manicured Botanic Gardens are a five-minute taxi ride away and are the ideal way to spend a relaxing afternoon after visiting the city’s impressive Titanic Belfast museum. Alternatively, if you’re visiting for a conference, the Assembly Buildings Conference and Exhibition Centre is directly opposite the hotel.

Number of Bedrooms
270

Food and Beverage Information
Onsite Bar and Restaurant

Number of Meeting Rooms
5

Meeting Room Capacity Max
30

Hotel Contact Information
leonardohotels.co.uk
belfast@leonardohotels.com

Leonardo Hotel Brighton



AT A GLANCE

Hotel City
Brighton

Hotel Address
101 Stroudley Road, BN1 4DJ Brighton

Nearby Landmarks/Transport Links
Leonardo Hotel Brighton is located in the heart of Brighton’s New England Quarter, meaning that the city’s best sites and attractions, including the Theatre Royal, The Lanes and Brighton Dome are all in easy walking distance, as well as Brighton Pier.

Number of Bedrooms
234

Food and Beverage Information
Oddsocks Bar and Restaurant

Number of Meeting Rooms
9

Meeting Room Capacity Max
110

Hotel Contact Information
leonardohotels.co.uk
brighton@leonardohotels.com

Leonardo Hotel Bradford



AT A GLANCE

Hotel City
Bradford

Hotel Address
2 Thornton Road, BD1 2DH Bradford

Nearby Landmarks/Transport Links
Outside, Bradford is a city rich in cultural heritage, and City Park, Alhambra Theatre and the National Science and Media Museum are a short walk away. But whether you’re visiting for culture or a conference, it’s worth staying longer to explore the wider area: the stunning Yorkshire Dales National Park and the rolling moorlands of Brontë Country are a short drive away.

Number of Bedrooms
198

Food and Beverage Information
Onsite Bar and Restaurant

Number of Meeting Rooms
3

Meeting Room Capacity Max
80

Hotel Contact Information
leonardohotels.co.uk
bradford@leonardohotels.com

Leonardo Hotel Cardiff



AT A GLANCE

Hotel City
Cardiff

Hotel Address
1 Park Place, CF10 3UD Cardiff

Nearby Landmarks/Transport Links
Once you’ve settled in, the city’s biggest attractions are all within walking distance, including Cardiff Castle, St David’s Dewi Sant shopping centre and Motorpoint Arena. And as no trip to Cardiff would be complete without an evening out on the tiles, you’ll be glad to know that the city’s many restaurants and bars are all in easy reach of Leonardo Hotel Cardiff.

Number of Bedrooms
142

Food and Beverage Information
Oddsocks Bar and Restaurant

Number of Meeting Rooms
9

Meeting Room Capacity Max
250

Hotel Contact Information
leonardohotels.co.uk
cardiff@leonardohotels.com

Leonardo Hotel Cheltenham



AT A GLANCE

Hotel City
Cheltenham

Hotel Address
Gloucester Rd, Cheltenham, Gloucestershire, GL51 0TS

Nearby Landmarks/Transport Links
The hotel is perfectly placed close to Cheltenham town centre, with its shopping centre, restaurants and bars, and the rolling hills of the Cotswolds – an Area of Outstanding Natural Beauty. It’s also just a short taxi ride from the famous Cheltenham Racecourse, and a five-minute drive from Cheltenham Spa train station.

Number of Bedrooms
122

Food and Beverage Information
Onsite Bar and Restaurant

Number of Meeting Rooms
12

Meeting Room Capacity Max
400

Hotel Contact Information
leonardohotels.co.uk
cheltenham@leonardohotels.com

Leonardo Hotel Croydon



AT A GLANCE

Hotel City
London

Hotel Address
26 Wellesley Road, CR0 9XY London

Nearby Landmarks/Transport Links
Leonardo Hotel Croydon is located near East Croydon station where you can catch a fast train to London Bridge or London Victoria every ten minutes. Fancy soaking up some local sights? The hotel is a mere five-minute stroll from the stunning Queen’s Gardens and directly opposite the popular Whitgift Shopping Centre.

Number of Bedrooms
240

Food and Beverage Information
Onsite Bar and Restaurant

Number of Meeting Rooms
14

Meeting Room Capacity Max
120

Hotel Contact Information
leonardohotels.co.uk
croydon@leonardohotels.com

Leonardol Hotel Chester



AT A GLANCE

Hotel City
Chester

Hotel Address
Pepper Street, Chester, CH1 1DW

Nearby Landmarks/Transport Links
Based near the city centre, Leonardo Hotel Chester is within walking distance of the most popular shopping destinations, local attractions and transport facilities. Chester train station is an 15-minute walk from the hotel, making cities such as London, Liverpool, and Manchester very accessible.

Number of Bedrooms
94

Food and Beverage Information
Corvo Bar and Restaurant

Hotel Contact Information
leonardohotels.co.uk
chester_reservations@leonardohotels.co.uk

Leonardo Hotel Derby



AT A GLANCE

Hotel City
Derby

Hotel Address
Saint Alkmund’s Way, DE1 3DB Derby

Nearby Landmarks/Transport Links
Leonardo Hotel Derby is located just north of Derby City Centre, in the historic Cathedral Quarter, just a ten-minute walk from the main shopping area and a four minute taxi ride from the train station.

Number of Bedrooms
213

Food and Beverage Information
Onsite Bar and Restaurant

Number of Meeting Rooms
4

Meeting Room Capacity Max
70

Hotel Contact Information
leonardohotels.co.uk
derby@leonardohotels.com

Leonardo Hotel East Midlands Airport



AT A GLANCE

Hotel City

East Midlands

Hotel Address

Castle Donington, Derby, DE74 2SH

Nearby Landmarks/Transport Links

Leonardo Hotel East Midlands Airport is a great starting point for exploring the surrounding region. East Midlands Parkway train station is located nearby and connects guests with Nottingham, Derby and Leicester in around 15 minutes. Should you be driving, each city is less than a 30-minute drive.

Number of Bedrooms

164

Food and Beverage Information

Onsite Bar and Restaurant

Number of Meeting Rooms

11

Meeting Room Capacity Max

50

Hotel Contact Information

leonardohotels.co.uk
eastmidlands@leonardohotels.com

Leonardo Hotel Glasgow



AT A GLANCE

Hotel City

Glasgow

Hotel Address

80 Jamaica Street, Glasgow, G1 4QG

Nearby Landmarks/Transport Links

The St Enoch SPT subway stop, Argyle Street and Queen Street stations are easily accessible from Leonardo Hotel Glasgow, while the city airport and M8 motorway are both in easy reach by car. It's also just three minutes' train ride from the SEC Centre and the SSE Hydro Arena.

Number of Bedrooms

321

Food and Beverage Information

Onsite Bar and Restaurant

Number of Meeting Rooms

10

Meeting Room Capacity Max

50

Hotel Contact Information

leonardohotels.co.uk
glasgow@leonardohotels.com

Leonardo Hotel Exeter



AT A GLANCE

Hotel City

Exeter

Hotel Address

Western Way, Exeter, EX1 2DB

Nearby Landmarks/Transport Links

Outside the hotel doors, you'll find the city centre just a short stroll away, including Exeter Cathedral and the Royal Albert Memorial Museum, which houses everything from art to natural history exhibits. You'll also be within easy reach of some of Devon's best loved sights, including Dartmoor National Park.

Number of Bedrooms

170

Food and Beverage Information

Onsite Bar and Restaurant

Number of Meeting Rooms

7

Meeting Room Capacity Max

90

Hotel Contact Information

leonardohotels.co.uk
exeter@leonardohotels.com

Leonardo Hotel Hinckley Island



AT A GLANCE

Hotel City

Hinckley

Hotel Address

Watling Street, Hinckley, LE10 3JA

Nearby Landmarks/Transport Links

Should you wish to explore the area, the market town of Hinckley is just north of the hotel, and nearby attractions include Bosworth Battlefield Heritage Centre, Twycross Zoo and Drayton Manor Theme Park.

Number of Bedrooms

362

Food and Beverage Information

Onsite Bar and Restaurant

Number of Meeting Rooms

26

Meeting Room Capacity Max

1000

Hotel Contact Information

leonardohotels.co.uk
hinckleyisland@leonardohotels.com

Leonardo Hotel Inverness



AT A GLANCE

Hotel City
Inverness

Hotel Address
Millburn Rd, Inverness, IV2 3TR

Nearby Landmarks/Transport Links
The hotel is just a few minutes’ walk from Inverness railway station, making it a great base for those travelling around Scotland by train. The popular Beaulieu Firth is just a 15-minute drive away, and for those wanting to go further afield, Culloden Moor and the Cairngorms National Park are within easy reach.

Number of Bedrooms
118

Food and Beverage Information
Onsite Bar and Restaurant

Number of Meeting Rooms
4

Meeting Room Capacity Max
250

Hotel Contact Information
leonardohotels.co.uk
inverness@leonardohotels.com

Leonardo Hotel Liverpool



AT A GLANCE

Hotel City
Liverpool

Hotel Address
No. 31 Keel Wharf, Liverpool, L3 4FN

Nearby Landmarks/Transport Links
Stay in Leonardo Hotel Liverpool, you’ll find yourself in the centre of Liverpool, with the city’s coolest districts, including the Baltic Triangle, the Georgian Quarter and the musical Cavern Quarter all within easy walking distance.

Number of Bedrooms
310

Food and Beverage Information
Oddsocks Bar and Restaurant

Number of Meeting Rooms
10

Meeting Room Capacity Max
100

Hotel Contact Information
leonardohotels.co.uk
liverpool@leonardohotels.com

Leonardo Hotel Leeds



AT A GLANCE

Hotel City
Leeds

Hotel Address
Brewery Place, Brewery Wharf, Leeds, LS10 1NE

Nearby Landmarks/Transport Links
Most of Leeds’ sights are a short walk away from Leonardo Hotel Leeds. Walk to the beautiful 19th-century Leeds Town Hall, or indulge in some retail therapy at the Victoria Quarter shopping centre, home to some of the UK’s best boutiques. Further afield is the Leventhorpe Vineyard, where you can try Yorkshire’s finest wines.

Number of Bedrooms
248

Food and Beverage Information
Onsite Bar and Restaurant

Number of Meeting Rooms
3

Meeting Room Capacity Max
68

Hotel Contact Information
leonardohotels.co.uk
leeds@leonardohotels.com

Leonardo Hotel Manchester Central



AT A GLANCE

Hotel City
Manchester

Hotel Address
Great Bridgewater St, Manchester, M1 5LE

Nearby Landmarks/Transport Links
Discover a haven in the Northern Powerhouse with Leonardo Hotel, just minutes from Oxford Road train station, Manchester Art Gallery and the Convention Centre.

Number of Bedrooms
265

Food and Beverage Information
Oddsocks Bar and Restaurant

Number of Meeting Rooms
2

Meeting Room Capacity Max
50

Hotel Contact Information
leonardohotels.co.uk
manchester@leonardohotels.com

Leonardo Hotel Middlesbrough



AT A GLANCE

Hotel City

Middlesbrough

Hotel Address

Fry St, Middlesbrough, TS1 1JH

Nearby Landmarks/Transport Links

Whether you're exploring the Riverside Stadium (home to Middlesbrough Football Club), the Dorman Museum, or Tees Transporter Bridge, the famous city landmark, our hotel in Middlesbrough offers the perfect base for visitors.

Number of Bedrooms

132

Food and Beverage Information

Onsite Bar and Restaurant

Number of Meeting Rooms

17

Meeting Room Capacity Max

400

Hotel Contact Information

leonardohotels.co.uk
middlesbrough@leonardohotels.com

Leonardo Hotel Newcastle



AT A GLANCE

Hotel City

Newcastle

Hotel Address

Scotswood Road, Newcastle, NE1 4AD

Nearby Landmarks/Transport Links

Consider Leonardo Hotel Newcastle for both its contemporary facilities and fantastic location which puts you within easy walking distance of top city attractions and Newcastle Central Station.

Number of Bedrooms

274

Food and Beverage Information

Onsite Bar and Restaurant

Number of Meeting Rooms

9

Meeting Room Capacity Max

100

Hotel Contact Information

leonardohotels.co.uk
newcastle@leonardohotels.com

Leonardo Hotel Milton Keynes



AT A GLANCE

Hotel City

Milton Keynes

Hotel Address

Midsummer Boulevard, Milton Keynes, MK9 2HP

Nearby Landmarks/Transport Links

Our hotel in Milton Keynes is located at the heart of the town on Midsummer Boulevard, an easy five minute walk from Milton Keynes Central Rail station and just over the road from a main bus line. So whether you're visiting for shopping, socialising or business, you'll find what you need just a short walk from the hotel.

Number of Bedrooms

279

Food and Beverage Information

Onsite Bar and Restaurant

Number of Meeting Rooms

12

Meeting Room Capacity Max

400

Hotel Contact Information

leonardohotels.co.uk
miltonkeynes@leonardohotels.com

Leonardo Hotel Newcastle Quayside



AT A GLANCE

Hotel City

Newcastle

Hotel Address

South Shore Road, Gateshead, NE8 3AE

Nearby Landmarks/Transport Links

Stay at Leonardo Hotel Newcastle Quayside and you will be within easy reach of shops, restaurants and sensational sights such as the Baltic Centre for Contemporary Art.

Number of Bedrooms

201

Food and Beverage Information

Onsite Bar and Restaurant

Number of Meeting Rooms

3

Meeting Room Capacity Max

180

Hotel Contact Information

leonardohotels.co.uk
newcastlequayside@leonardohotels.com

Leonardo Hotel Nottingham



AT A GLANCE

Hotel City
Nottingham

Hotel Address
Station Street, Nottingham, NG2 3BJ

Nearby Landmarks/Transport Links
Located in the heart of the city on Station Street, Leonardo Hotel is one of the most conveniently located hotels in Nottingham. We're a five minute walk away from the train station and tram, and a short walk from the Lace Market and Hockley. See what Nottingham has to offer and book a city break.

Number of Bedrooms
264

Food and Beverage Information
Onsite Bar and Restaurant

Number of Meeting Rooms
10

Meeting Room Capacity Max
100

Hotel Contact Information
leonardohotels.co.uk
nottingham@leonardohotels.com

Leonardo Hotel Sheffield



AT A GLANCE

Hotel City
Sheffield

Hotel Address
119 Eyre Street, Sheffield, S1 4QW

Nearby Landmarks/Transport Links
Situated on Eyre Street in the heart of the city, the hotel is just 10-minutes' walk from the train station and the hip Devonshire Quarter, with its trendy boutiques, bars and restaurants.

Number of Bedrooms
259

Food and Beverage Information
Onsite Bar and Restaurant

Number of Meeting Rooms
8

Meeting Room Capacity Max
80

Hotel Contact Information
leonardohotels.co.uk
sheffield@leonardohotels.com

Leonardo Hotel Plymouth



AT A GLANCE

Hotel City
Plymouth

Hotel Address
50 Exeter Street, Plymouth, PL4 0AZ

Nearby Landmarks/Transport Links
Ideally situated in the centre of Plymouth, our stylish hotel is the perfect home from home for anyone visiting this vibrant harbour city. You'll find us close to the Historic Quarter on Exeter Street, 10 minutes from the train station and a stone's throw from the top attractions on offer.

Number of Bedrooms
247

Food and Beverage Information
Onsite Bar and Restaurant

Number of Meeting Rooms
11

Meeting Room Capacity Max
120

Hotel Contact Information
leonardohotels.co.uk
plymouth@leonardohotels.com

Leonardo Hotel Southampton



AT A GLANCE

Hotel City
Southampton

Hotel Address
Charlotte Place, Southampton, SO14 0TB

Nearby Landmarks/Transport Links
Leonardo Hotel Southampton is an ideal place to stay whether you're visiting this beautiful coastal city with family and friends, or on business. An easy 15-minute walk from the central train station, and under four miles from the city airport.

Number of Bedrooms
270

Food and Beverage Information
Onsite Bar and Restaurant

Number of Meeting Rooms
9

Meeting Room Capacity Max
120

Hotel Contact Information
leonardohotels.co.uk
southampton@leonardohotels.com

Leonardo Hotel Swindon



AT A GLANCE

Hotel City
Swindon

Hotel Address
Fleming Way, Swindon, SN1 2NG

Nearby Landmarks/Transport Links
Situating on Fleming Way, our Leonardo Hotel is just eight minutes away from Swindon train station on foot and a 10 minute taxi ride from Windmill Hill Business Park. Located close to the town’s many shops, restaurants and bars, our Swindon hotel is ideally located whether you’re visiting for business, pleasure, or a little bit of both.

Number of Bedrooms
229

Food and Beverage Information
Onsite Bar and Restaurant

Number of Meeting Rooms
7

Meeting Room Capacity Max
120

Hotel Contact Information
leonardohotels.co.uk
swindon@leonardohotels.com

Leonardo Boutique Hotel Hotel Perth



AT A GLANCE

Hotel City
Perth

Hotel Address
Crieff Road, Perth, PH1 3JT

Nearby Landmarks/Transport Links
Set in six acres of landscaped gardens yet only five minutes from Perth, the hotel provides a quiet retreat for those who can’t resist the pull of the Fair City. Leonardo Boutique Hotel Huntingtower Perth is nearby Huntingtower Castle, while Edinburgh, Glasgow and Aberdeen are less than two hours away with easy access to the A9 and M90.

Number of Bedrooms
34

Food and Beverage Information
Onsite Bar and Restaurant

Number of Meeting Rooms
5

Meeting Room Capacity Max
200

Hotel Contact Information
leonardohotels.co.uk
huntingtowerperthreservations@leonardohotels.co.uk

Leonardo Hotel Watford



AT A GLANCE

Hotel City
Watford

Hotel Address
Clarendon Road, Watford, WD17 1JA

Nearby Landmarks/Transport Links
As well as having London’s many sights and sounds close by, you’ll find several attractions to keep you entertained right on your doorstep. Head down the road to the sleek intu Watford shopping centre for some retail therapy or a bite to eat. You’ll also find the bustling Watford Indoor Market a few minutes’ walk from the hotel, plus endless eateries and trendy bars in the city itself.

Number of Bedrooms
216

Food and Beverage Information
Onsite Bar and Restaurant

Number of Meeting Rooms
8

Meeting Room Capacity Max
50

Hotel Contact Information
leonardohotels.co.uk
watford@leonardohotels.com

Leonardo Hotel Bristol City



AT A GLANCE

Hotel City
Bristol

Hotel Address
3 Temple Way, Bristol, BS2 0GS

Nearby Landmarks/Transport Links
Based in the city centre, and less than an 8 minute walk to Bristol Temple Meads Train Station, Leonardo Hotel Bristol City is within walking distance of the most popular shopping destinations and art galleries like Centrespace featuring up and coming artists and Cargo, the vibrant destination on Bristol’s Harbour side. Enjoy the famous Clifton suspension bridge and explore the Clifton Observatory on your trip to Bristol, both a short drive away.

Number of Bedrooms
197

Food and Beverage Information
Leo’s Bar and Restaurant

Number of Meeting Rooms
2

Meeting Room Capacity Max
25

Hotel Contact Information
leonardohotels.co.uk
bristolenquiries@leonardohotels.co.uk

Leonardo Hotel Edinburgh City



AT A GLANCE

Hotel City
Edinburgh

Hotel Address
79 Lauriston Place, Edinburgh, EH3 9HZ

Nearby Landmarks/Transport Links
Located in the heart of the city and steeped in history, our Edinburgh hotel is sure to make your stay as unique as the city itself. You'll find us among the city's famous landmarks and just a short walk from Edinburgh Castle, the Royal Mile and famous Grassmarket.

Number of Bedrooms
52

Food and Beverage Information
Onsite Bar

Hotel Contact Information
leonardohotels.co.uk
edinburghcityreservations@leonardohotels.co.uk

Leonardo Hotel Heathrow Airport



AT A GLANCE

Hotel City
Heathrow

Hotel Address
Bath Road, Sipson, West Drayton, UB7 0DP

Nearby Landmarks/Transport Links
The ideal traveller's hotel. Offering easy access to and from the airport terminals in just a few minutes using the handy Hoppa bus.You'll also be able to reach the centre of London in just 15 minutes via the Heathrow Express train service. Or alternatively via the nearby tube at Hatton Cross Station.

Number of Bedrooms
230

Food and Beverage Information
Onsite Bar and Restaurant

Number of Meeting Rooms
15

Meeting Room Capacity Max
130

Hotel Contact Information
leonardohotels.co.uk
londonheathrowreservations@leonardohotels.co.uk

Leonardo Hotel Edinburgh Murrayfield



AT A GLANCE

Hotel City
Edinburgh

Hotel Address
187 Clermiston Road, Edinburgh, EH12 6UG

Nearby Landmarks/Transport Links
Situating just a short drive from Edinburgh Zoo, Murrayfield Stadium, and the iconic Edinburgh Castle, Leonardo Hotel Edinburgh Murrayfield offers a central location to explore local attractions. The hotel is just off the M8 and M90 motorways and is a short drive from Edinburgh Airport or Edinburgh Haymarket station.

Number of Bedrooms
111

Food and Beverage Information
Onsite Bar and Restaurant

Number of Meeting Rooms
7

Meeting Room Capacity Max
320

Hotel Contact Information
leonardohotels.co.uk
edinburghmurrayfieldreservations@leonardohotels.co.uk

Leonardo Hotel Manchester Piccadilly



AT A GLANCE

Hotel City
Manchester

Hotel Address
260 Great Ancoats Street, Manchester, M4 7DB

Nearby Landmarks/Transport Links
Based near the city centre, Leonardo Hotel Manchester Piccadilly is within walking distance of the most popular local attractions and transport facilities. Piccadilly station is a short walk from the hotel, making cities such as London, Liverpool, and Sheffield very accessible.

Number of Bedrooms
275

Food and Beverage Information
Leo's Bar and Restaurant

Hotel Contact Information
leonardohotels.co.uk
manchesterpiccadilly_reservations@leonardohotels.co.uk

Leonardo Inn Hotel Aberdeen Airport



AT A GLANCE

Hotel City

Aberdeen

Hotel Address

Argyll Way, AB21 0AF Aberdeen

Nearby Landmarks/Transport Links

In addition to its proximity to the airport, the hotel is less than 30 minutes drive from the Scottish city hotspots, such as the Aberdeen Art Gallery and Maritime Museum, making the Leonardo Inn Hotel Aberdeen Airport an excellent option for exploring the area.

Number of Bedrooms

202

Food and Beverage Information

Onsite Bar and Restaurant

Number of Meeting Rooms

1

Meeting Room Capacity Max

20

Hotel Contact Information

leonardohotels.co.uk

aberdeenairportreservations@leonardohotels.co.uk

Leonardo Inn Hotel Glasgow West End



AT A GLANCE

Hotel City

Glasgow

Hotel Address

4 Shelley Road, Glasgow, G12 0ZD

Nearby Landmarks/Transport Links

Situated just ten minutes from Glasgow's famous West End, the hotel's central location makes it the ideal place to stay for travelers looking to explore the city's rich culture. Those looking to visit Loch Lomond will benefit from the hotel's close proximity to the M8 motorway, making it the perfect sightseeing base.

Number of Bedrooms

137

Food and Beverage Information

Onsite Bar and Restaurant

Number of Meeting Rooms

3

Meeting Room Capacity Max

120

Hotel Contact Information

leonardohotels.co.uk

glasgowwestendreservations@leonardohotels.co.uk



Leonardo Royal Hotel Birmingham



AT A GLANCE

Hotel City

Birmingham

Hotel Address

245 Broad Street, B1 2HQ Birmingham

Nearby Landmarks/Transport Links

Most of Birmingham's iconic sights, bars and restaurants are a short walk away from the hotel. For those wanting to venture further afield, Drayton Manor Theme Park and Hanbury Hall and Gardens are easily accessible.

Number of Bedrooms

445

Food and Beverage Information

Leo's Bar and Restaurant

Number of Meeting Rooms

20

Meeting Room Capacity Max

275

Hotel Contact Information

leonardohotels.co.uk

birminghamroyal@leonardohotels.com



Leonardo Royal Hotel Brighton Waterfront



AT A GLANCE

Hotel City
Brighton

Hotel Address
King's Road, Brighton, BN1 2GS

Nearby Landmarks/Transport Links
You'll find some of Brighton's top sights including SEA LIFE Brighton, the British Airways i360 viewing platform and the Royal Pavilion, all within easy reach of the hotel.

Number of Bedrooms
210

Food and Beverage Information
Leo's Bar and Restaurant

Number of Meeting Rooms
8

Meeting Room Capacity Max
300

Hotel Contact Information
leonardohotels.co.uk
brightonroyal@leonardohotels.com



Leonardo Royal Hotel Edinburgh



AT A GLANCE

Hotel City
Edinburgh

Hotel Address
43 Jeffrey Street, Edinburgh, EH1 1DH

Nearby Landmarks/Transport Links
Situated in the heart of the city's Old Town, just off the famous Royal Mile and overlooking Waverley train station, this Edinburgh hotel puts you in easy walking distance of the city's best-loved attractions, including Edinburgh Castle, the National Museum of Scotland and the Edinburgh International Conference Centre.

Number of Bedrooms
186

Food and Beverage Information
Leo's Bar and Restaurant

Hotel Contact Information
leonardohotels.co.uk
edinburghroyal@leonardohotels.com



Leonardo Royal Hotel Oxford



AT A GLANCE

Hotel City
Oxford

Hotel Address
Godstow Rd, Oxford, OX2 8AL

Nearby Landmarks/Transport Links
Revel in the stunning architecture near the hotel or take a bus into the city centre and visit Oxford castle, go punting on the River Cherwell, or stroll through the city's historic laneways.

Number of Bedrooms
240

Food and Beverage Information
Leo's Bar and Restaurant and
Marco Pierre White Steakhouse Bar & Grill

Number of Meeting Rooms
20

Meeting Room Capacity Max
350

Hotel Contact Information
leonardohotels.co.uk
oxfordroyal@leonardohotels.com



Leonardo Royal Hotel Edinburgh Haymarket

Leonardo Royal Hotel Edinburgh Haymarket has 282 bedrooms in total. The hotel offers a range of spacious rooms to suit your purpose, from a standard double to king suites. With free WiFi and a TV available in each of room, Leonardo Royal Hotel Edinburgh Haymarket provides guests with all the comforts of home.



AT A GLANCE

Hotel City
Edinburgh

Hotel Address
1 Morrison Link, Edinburgh, EH3 8DN

Nearby Landmarks/Transport Links
You'll find us near Haymarket train station, a stone's throw from the Edinburgh Castle, The Royal Mile, and many other tourist attractions Edinburgh has to offer.

Number of Bedrooms
282

Food and Beverage Information
Onsite Bar and Restaurant

Number of Meeting Rooms
4

Meeting Room Capacity Max
70

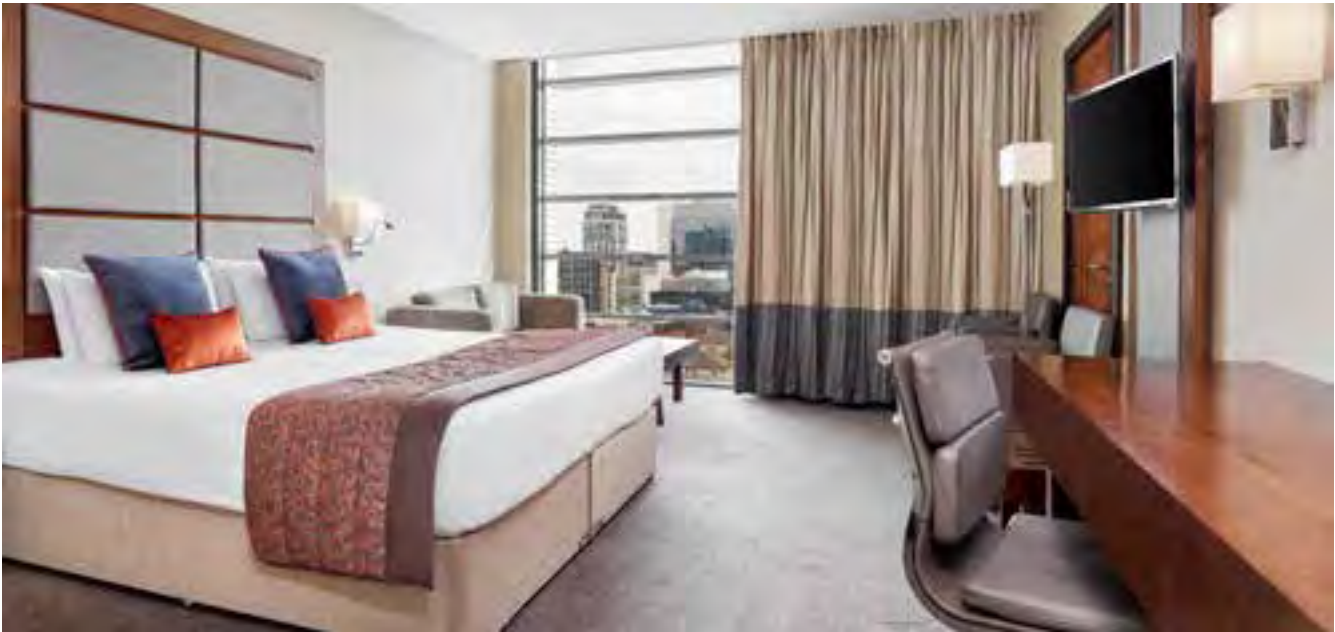
Hotel Contact Information
leonardohotels.co.uk
reservations@leonardohotels.co.uk



Leonardo Royal Hotel London City

With a convenient city centre location close to Tower Bridge and the iconic Tower of London, Leonardo Royal Hotel London City is perfect for leisure and business guests wanting to make the most of the UK’s world-renowned capital. Its central location means it easy to reach from all over the country, making it a great place to lay your head after a long drive or train ride. Offering 317 spacious and comfortable guestrooms, Leo’s Bar and Restaurant, Corvo Bar & Cafe, a luxury spa with 25m swimming pool, fitness club, and 12 meeting and conference suites, it’s the perfect base for your trip to London. If you’re looking for a bite to eat or wind down with a drink after a long day, Leo’s Bar and Restaurant is the perfect place to enjoy a delicious meal or signature cocktail. Wake up to a sumptuous breakfast served in Leo’s Restaurant to kick start your day.

AT A GLANCE
Hotel City London
Hotel Address 8-14 Cooper's Row, London, EC3N 2BQ
Nearby Landmarks/Transport Links Our hotel, is in a fantastic city centre location, close to a number of popular local attractions including, Tower Bridge, The Tower of London, Petticoat Lane Market, The O2 and St. Katharine's Dock. Transport links are also close by, with Tower Hill Tube Station a 2 minute walk away, and both Fenchurch Street rail and Tower Gateway DLR stations are just a 4 minute walk away, offering easy access to all parts of London, and London City Airport.
Number of Bedrooms 317
Food and Beverage Information Leo's Bar and Restaurant and Corvo Bar and Cafe
Number of Meeting Rooms 12
Meeting Room Capacity Max 500
Hotel Contact Information leonardohotels.co.uk londoncityreservations@leonardohotels.co.uk



Leonardo Royal Hotel London Tower Bridge

Our 370 modern and spacious guestrooms all feature the bespoke DREAM BED by Leonardo Hotels, with crisp white linens, feather and down duvet and plush pillows, ensuring a great night’s sleep. If you’re looking for a bite to eat or wind down with a drink after a long day, Leo’s onsite Bar and Restaurant is the perfect place to enjoy a delicious meal or signature cocktail. Wake up to a sumptuous breakfast served in Leo’s Restaurant to kick start your day with a selection of hot dishes, pastries, cereals and fruit.



AT A GLANCE
Hotel City London
Hotel Address 45 Prescott St, London, E1 8GP
Nearby Landmarks/Transport Links The perfect base for exploring the UK’s bustling capital, our Leonardo Royal Hotel London Tower Bridge is close to some of London’s most iconic landmarks, including The Tower of London, The Shard and, of course, Tower Bridge itself. Our 4-star hotel is located just a short walk away from East London, with all its cosmopolitan coffee shops and eateries and a short tube ride away from Shoreditch’s on-trend bars. The nearest tube station, Tower Hill, is only a seven-minute walk away.
Number of Bedrooms 370
Food and Beverage Information Leo's Bar and Restaurant
Number of Meeting Rooms 17
Meeting Room Capacity Max 850
Hotel Contact Information leonardohotels.co.uk towerbridge_guestrelations@leonardohotels.co.uk



Leonardo Royal Hotel Southampton Grand Harbour

Known for its character and ambience, our Leonardo Royal Hotel is ideally situated on the Southampton waterfront, just five minutes by car from Southampton Port.

Whether you opt for city or sea views, we offer 173 modern, spacious rooms, perfect for business, leisure, and everything in between. Each room includes free Wi-Fi, a flat-screen TV, and a hairdryer, so you can feel at home from the moment you arrive.

Downstairs, our Royal Bar serve up plenty of options to satisfy any need or craving.



AT A GLANCE

Hotel City
Southampton

Hotel Address
West Quay Road, Southampton, SO15 1AG

Nearby Landmarks/Transport Links
Known for its character and ambience, our Leonardo Royal Hotel is ideally situated on the Southampton waterfront, just five minutes by car from Southampton Port.

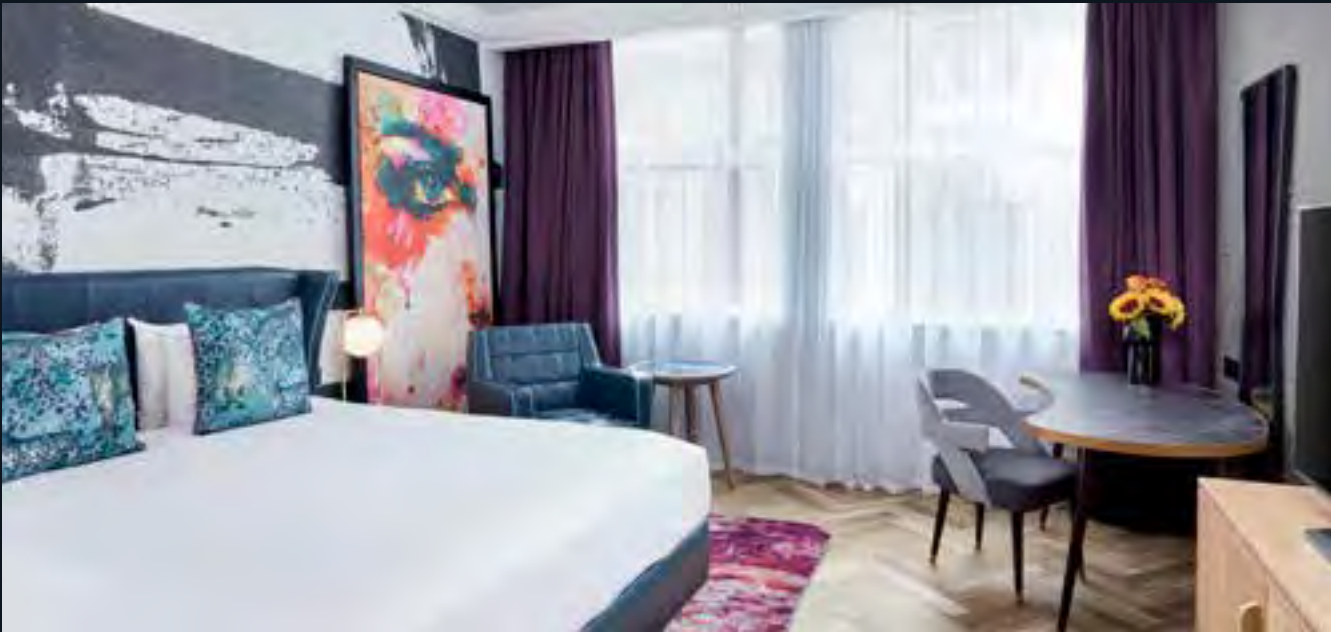
Number of Bedrooms
173

Food and Beverage Information
Leo's Bar and Restaurant, and Marco Pierre White Bar and Grill

Number of Meeting Rooms
13

Meeting Room Capacity Max
500

Hotel Contact Information
leonardohotels.co.uk
southamptongrandharbour@leonardohotels.co.uk



NYX Hotel London Holborn



AT A GLANCE

Hotel City
London

Hotel Address
50 - 60 Southampton Row, London, WC1B 4AR

Nearby Landmarks/Transport Links
The hotel is just a ten minute walk away from top attractions like the British Museum and fifteen minutes' walk from the vibrant Covent Garden and Soho areas. For those looking to explore, Holborn underground station is less than 5 minutes' walk from the hotel and Russell Square underground station is also within walking distance. King's Cross, Euston and St. Pancras International rail stations are also a short distance away; providing access to the rest of London and beyond.

Number of Bedrooms
213

Food and Beverage Information
Midtown, Glasshouse Rooftop Bar

Meeting Room Capacity Max
-

Hotel Contact Information
nyx-hotels.co.uk
nyxholborn@leonardohotels.co.uk



AT A GLANCE

Hotel City
London

Hotel Address
10 Godliman Street, London, EC4V 5AJ

Nearby Landmarks/Transport Links
Nestled beside St Paul's Cathedral in London's business district, the Leonardo Royal Hotel London St Paul's is the ideal place for both business and leisure visitors to the city. The hotel is conveniently located just a five minute walk from Blackfriars and Mansion House stations.

Number of Bedrooms
459

Food and Beverage Information
Leo's Bar and Restaurant

Number of Meeting Rooms
16

Meeting Room Capacity Max
1200

Hotel Contact Information
leonardohotels.co.uk
lls_reservations@leonardohotels.co.uk

Leonardo Royal Hotel London St Paul's

Offering 459 spacious and modern guestrooms, Leo's Bar and Restaurant, a luxury spa with an 18m heated swimming pool, fitness club, and 23 meeting and conference suites, it's the perfect base for your trip to London. If you're looking for a bite to eat or wind down with a drink after a long day, Leo's Bar and Restaurant is the perfect place to enjoy a delicious meal or signature cocktail. Wake up to a sumptuous breakfast served in Leo's Restaurant to kick-start

your day with a selection of hot dishes, pastries, cereals and fruit. For those that want to relax and enjoy a coffee or connect to a laptop, the impressive glass atrium surrounded by beautiful greenery provides the perfect backdrop. Guests at Leonardo Royal London St Paul's also have access to Rena Health and Fitness Club, with a range of luxury fitness services, including a fully-equipped gym, heated swimming pool, and the stunning Rena Spa.





AT A GLANCE

Hotel City
Manchester

Hotel Address
16 Peter Street, Manchester, M60 2DS

Nearby Landmarks/Transport Links

The Midland is conveniently situated so our guests can enjoy all the attractions the city has to offer. Manchester Oxford Road station is less than a 10 minute walk and the St Peter's Square tram stop is right outside, so our guests can travel to the Piccadilly Gardens, Old Trafford or Manchester Airport and be only minutes away.

Number of Bedrooms
312

F&B Information

Adam Reid at the French, Mount Street Dining Room and Bar, The Midland Lounge and Champagne Bar, The Tearooms

Number of Meeting Rooms
11

Meeting Room Capacity Max
700

Hotel Contact Information
themidlandhotel.co.uk
reception@themidlandmanchester.co.uk



The Midland

LEONARDO *Limited Edition*

Located in the heart of the city, The Midland is the most iconic hotel in Manchester hosting Kings, Queens, Presidents and Prime Ministers.

With 312 modern style bedrooms, two award-winning restaurants, Rena Spa and 14 impressive conference and meetings rooms, you won't have to venture far.



AT A GLANCE

Hotel City
London

Hotel Address
21 Piccadilly, London, W1J 0BH

Nearby Landmarks/Transport Links
Located 2 minutes from Piccadilly Circus underground station, The Dilly is centrally located for exploring London. Our Piccadilly address means we are right in the centre of theatre land, with the West End's best shows just moments away.

Number of Bedrooms
238

F&B Information
Terrace at The Dilly, Madhu's at The Dilly, Downstairs at The Dilly

Number of Meeting Rooms
7

Meeting Room Capacity Max
200

Hotel Contact Information
thedillylondon.com

The Dilly

LEONARDO *Limited Edition*

Built in 1908, The Dilly has a long history of being one of London's finest hotels. Right in the heart of Piccadilly, its iconic location and London-inspired touches provide everything guests need for a stay in the city centre.

Retreat to one of The Dilly's spacious bedrooms, recharge at the impressive Health Club, dine at one of the vibrant restaurants, or sip a cocktail at the piano bar.





AT A GLANCE

Hotel City
Brighton

Hotel Address
97-99 King’s Road, Brighton, BN1 2FW

Nearby Landmarks/Transport Links
The Grand Brighton is a short stroll from the famous West Pier and the i360, and a 10-minute walk from the famous Royal Pavilion, The Lanes, and Brighton Pier. Brighton Train Station is less than a 15 minute walk which offers connections to Gatwick Airport and central London.

Number of Bedrooms
201

F&B Information
Cyan Brighton, Victoria Bar and Lounge and Afternoon Tea at The Grand

Number of Meeting Rooms
5

Meeting Room Capacity Max
900

Hotel Contact Information
grandbrighton.co.uk

The Grand

LEONARDO *Limited Edition*

Located on the iconic Brighton seafront, The Grand Brighton was opened on 21st July 1864 and celebrated as the original “Palace by the Sea”.

Today, the 159-year-old hotel offers 201 beautiful rooms stretching over seven floors and set around the original sweeping staircase.



Israel

- Leonardo Hotels
- Leonardo Royal Hotels
- Leonardo Boutique Hotels
- Herods
- NYX Hotels by Leonardo Hotels
- Leonardo Limited Edition



Leonardo Plaza Hotel Ashdod



AT A GLANCE

Hotel City
Ashdod

Hotel Address
1 Yam HaTichon Blvd Ashdod, Israel, 7704402 Ashdod

Nearby Landmarks/Transport Links
Just steps from the beach, in an ample square, facing the fascinating sculpture Eye of the Sun by Israeli artist Motti Mizrachi, Leonardo Plaza Ashdod is the ultimate destination for a family vacation on the Mediterranean coast of Israel. Besides beach fun, there are many things to do when you stay at Leonardo Plaza Ashdod. The hotel is close to many archaeological sites and monuments scattered all around the city. Must-see attractions include the Corinne Mamane Museum of Philistine Culture, the Ashdod Sand Dune Park, the Port of Ashdod, and the Musical Fountain. Guided tours of Ashdod and the surrounding area are available for our guests at no extra charge.

Number of Bedrooms
183

Food and Beverage Information
Restaurant

Number of Meeting Rooms
6

Meeting Room Capacity Max
550

Hotel Contact Information
+972 35 110000
info@fattal.co.il

Hotel Botanica Haifa

FATTAL *Limited Edition*



AT A GLANCE

Hotel City
Haifa

Hotel Address
Ben Gurion Boulevard 50, Haifa

Nearby Landmarks/Transport Links
Featuring a unique design style, this innovative hotel draws its inspiration from the nearby Bahai Gardens, as well as from spectacular botanical gardens from around the globe. Here you can enjoy deluxe spa services, conference and work rooms, an incredible rooftop, delicious meals, spacious rooms and many more delightful treats. The Botanica Hotel is your gateway to everything worth seeing in Haifa: cafés and restaurants, vintage shops, the hottest bars and the colourful Wadi Nisnas district.

Number of Bedrooms
173

Food and Beverage Information
Restaurant

Number of Meeting Rooms
4

Meeting Room Capacity Max
200

Hotel Contact Information
+972 46 040409
info@fattal.co.il

Leonardo Hotel Negev



AT A GLANCE

Hotel City
Beer Sheva

Hotel Address
Henrietta Szold Street 4, Be'er Sheva, Israel, 8489430
Beer sheva

Nearby Landmarks/Transport Links
The location is another advantage that makes Leonardo Negev Be'er Sheva an irresistible destination in this part of the Negev desert of southern Israel. The hotel is next to the Central Bus Station, which enables visitors easy access to some of the most interesting city attractions, including the Negev Museum of Art, the Gateway to the Negev Visitor Center, Abraham's Well, and the Museum of Bedouin Culture among others.

Number of Bedrooms
259

Food and Beverage Information
Restaurant & Lobby Bar

Number of Meeting Rooms
3

Meeting Room Capacity Max
300

Hotel Contact Information
+972 35 110000
info@fattal.co.il

Herods Dead Sea Hotel



AT A GLANCE

Hotel City
Dead Sea

Hotel Address
Ein Bokek, Israel, Dead Sea

Nearby Landmarks/Transport Links
A romantic setting, by all means, the location also gives guests quick access to some of the area's most beguiling attractions, including the Ein Gedi Nature Reserve, the Wadi David waterfalls, the Masada National Park, the archaeological sites at the Qumran National Park, and the Zohar Fortress above Wadi Zohar.

Number of Bedrooms
223

Food and Beverage Information
Snack Bar, H Bar, Panorama Bar, Rothschild Bar

Number of Meeting Rooms
3

Meeting Room Capacity Max
100

Hotel Contact Information
+972 35 110000
info@fattal.co.il

Leonardo Plaza Hotel Dead Sea



AT A GLANCE

Hotel City
Dead Sea

Hotel Address
Ein Bokek, Israel, Dead Sea

Nearby Landmarks/Transport Links
The location of the hotel is very advantageous for travelers who like exploring new places. Several significant landmarks, like the Zohar Fortress and the Dead Sea Lookout, are minutes away from the hotel. Must-see attractions include the Ein Gedi Nature Reserve, which is famous for its natural springs and botanical gardens; UNESCO World Heritage Site Masada National Park for the ancient fortress; and Qumran National Park, where the Dead Sea scrolls were unearthed in 1946-1956. Jeep tours in the desert are among the favorite pastimes in the area.

Number of Bedrooms
280

Food and Beverage Information
Restaurant & Lobby Bar

Number of Meeting Rooms
2

Meeting Room Capacity Max
500

Hotel Contact Information
+972 35 110000
info@fattal.co.il

Leonardo Club Hotel Dead Sea



AT A GLANCE

Hotel City
Dead Sea

Hotel Address
Ein Bokek dead sea, Dead Sea

Nearby Landmarks/Transport Links
Surrounded by the Dead Sea, the Judean Hills, and the Edom Mountains, the hotel offers endless spellbinding views from all its 388 rooms and suites. Enjoy the coolness of the air-conditioning inside or refresh yourself in one of the outdoor pools if the heat of the summer is too much.

Number of Bedrooms
385

Food and Beverage Information
Restaurant & Poolside Bar

Number of Meeting Rooms
-

Meeting Room Capacity Max
-

Hotel Contact Information
+972 35 110000
info@fattal.co.il

Leonardo Inn Hotel Dead Sea



AT A GLANCE

Hotel City
Dead Sea

Hotel Address
Ein Bokek Dead Sea, Dead Sea

Nearby Landmarks/Transport Links
The hotel's location in walking distance to the Dead Sea Mall is appealing as this shopping destination counts among the must-see attractions of the area. Other favourite places to see are the Ein Gedi Nature Reserve with Wadi David in the North and Wadi Arugot in the South; Qumran National Park – the site that hid the Dead Sea Scrolls for thousands of years; and the Masada UNESCO World Heritage Site in the Judean Desert. You can hike around to see these biblical sites at your pace or opt for a Jeep tour in the desert – another favourite pastime among travellers vacationing at the Dead Sea.

Number of Bedrooms
96

Food and Beverage Information
Taj Mahal Restaurant & Restaurant

Number of Meeting Rooms
-

Meeting Room Capacity Max
-

Hotel Contact Information
+972 35 110000
info@fattal.co.il

Herods Vitalis Eilat Hotel



AT A GLANCE

Hotel City
Eilat

Hotel Address
8 Ha-Yam Street, Eilat

Nearby Landmarks/Transport Links
You'll have plenty to see a do in Eilat: dive or snorkel in the Red Sea to see the coral reef, swim with the dolphins at the Dolphin Reef, see what happens under the sea at the Coral World Underwater Observatory, hike the Red Canyon, explore the mysteries of the Negev Desert with a Jeep tour, observe the gracious flight of the migratory birds at the International Birding and Research Centre Eilat, visit the Botanical Gardens of Eilat, and much more. After a day of adventures, sightseeing or shopping in tax-free Eilat, return to Herods Vitalis to recharge your batteries.

Number of Bedrooms
53

Food and Beverage Information
Lawrence Restaurant & Vitalis Lounge

Hotel Contact Information
+972 35 110000
info@fattal.co.il

Herods Boutique Eilat Hotel



AT A GLANCE

Hotel City
Eilat

Hotel Address
11 Ha-Yam Street, Eilat

Nearby Landmarks/Transport Links
The location of the hotel right at the Eilat Marina is a convenient starting point to explore everything the city has to offer or to drive to famous attractions like the Coral Beach Nature Reserve and Conservation Area and the Coral World Underwater Observatory. Or, perhaps you will be tempted by more adventurous pastimes like Jeep tours in the Negev Desert or motorbike rides through the mountains on the Eilat Ring Trail.

Number of Bedrooms
100

Food and Beverage Information
Poolbar, Lobby bar and Main Restaurant

Number of Meeting Rooms
3

Meeting Room Capacity Max
1100

Hotel Contact Information
+972 35 110000
info@fattal.co.il

Herods Palace Eilat Hotel



AT A GLANCE

Hotel City
Eilat

Hotel Address
6 Ha-Yam Street, 8814101 Eilat

Nearby Landmarks/Transport Links
Outside the hotel, guests will find the bustling promenade with shops and restaurants, the fantastic Ice Mall where you can ice skate even the weather outside is scorching, and the Spiral Park with its adrenaline-pumping carousels and thrills. Must-see attractions in Eilat include the Dolphin Reef, where interactions with the splendid marine mammals are typical; the Coral Beach Nature Reserve and Conservation Area where you can dive or snorkel to see the coral reef and the fauna of the Red Sea; the Coral World Underwater Observatory, which has an amusement park and a fantastic aquarium with sharks and stingrays. Activities also include Jeep tours in the desert, hikes in the Eilat Mountains, cycling, birdwatching, and practising all kinds of watersports.

Number of Bedrooms
297

Food and Beverage Information
Tamarind Restaurant, Poolside Bar, Officers Bar, Lobby Bar, Restaurant

Hotel Contact Information
+972 35 110000
info@fattal.co.il

Leonardo Plaza Hotel
Eilat



AT A GLANCE

Hotel City
Eilat

Hotel Address
8 Tarshish Street, Eilat

Nearby Landmarks/Transport Links
Feel free to adventure outside the hotel to discover the wonderful attractions of the city. The Spiral Park with its adrenaline-pumping carousels and free-falling towers is just around the corner. The Dolphin Reef with its bottlenose dolphins swimming in free waters is less than ten minutes by car. Dive or snorkel at the Coral Beach Nature Reserve and Conservation Area, and if you are not a swimmer but you still want to see the coral reef, the Coral World Underwater Observatory offers you this opportunity.

Number of Bedrooms
300

Food and Beverage Information
Restaurant

Number of Meeting Rooms
3

Meeting Room Capacity Max
350

Hotel Contact Information
+972 35 110000
info@fattal.co.il

Leonardo Club Hotel
Eilat



AT A GLANCE

Hotel City
Eilat

Hotel Address
North Beach, Eilat, Israel, Eilat

Nearby Landmarks/Transport Links
If you are not into shopping, there’s plenty to do in Eilat to keep you busy for days: book a Jeep tour in the Negev Desert, hike the Red Canion, dive in the Red Sea to see the coral reef, observe the fish and corals in the largest aquarium in the Middle East – the Coral World Underwater Observatory, visit the Timna Valley Park to see the copper mines and the striking King Solomon's Pillars. The beaches of Eilat are pristine and offer a wealth of watersports and entertainment opportunities.

Number of Bedrooms
282

Food and Beverage Information
All-inclusive

Number of Meeting Rooms
-

Meeting Room Capacity Max
-

Hotel Contact Information
+972 35 110000
info@fattal.co.il

Leonardo Privilege Hotel
Eilat



AT A GLANCE

Hotel City
Eilat

Hotel Address
6 Kamen Street, Eilat

Nearby Landmarks/Transport Links
A short swagger from Leonardo Privilege Eilat you’ll find the trendiest shops and eateries the city has to offer, and the ever-fascinating attractions of the Red Sea: The Dolphin Reef, the Coral Beach Nature Reserve and Conservation Area, and the Coral World Underwater Observatory. Favourite pastimes in the area include Jeep tours in the Negev Desert, hikes in the Eilat Mountains, and birdwatching at the International Birding and Research Centre Eilat.

Number of Bedrooms
247

Food and Beverage Information
All-inclusive

Number of Meeting Rooms
-

Meeting Room Capacity Max
-

Hotel Contact Information
+972 35 110000
info@fattal.co.il

U Coral Beach Club Eilat
Ultra



AT A GLANCE

Hotel City
Eilat

Hotel Address
Almog Beach Marina, Eilat, Israel, 8812101 Eilat

Nearby Landmarks/Transport Links
With U Coral Beach Club Eilat Ultra All-Inclusive, guests can also discover other cherished local attractions, as the hotel organizes excursions to the UNESCO World Heritage Sites of Massada and Petra, and tours of Jerusalem, among other activities.

Number of Bedrooms
282

Food and Beverage Information
All-inclusive

Number of Meeting Rooms
1

Meeting Room Capacity Max
480

Hotel Contact Information
+972 35 110000
info@fattal.co.il

U Magic Palace Eilat



AT A GLANCE

Hotel City

Eilat

Hotel Address

2 Kamen Street, Eilat

Nearby Landmarks/Transport Links

Discover the Negev Desert with a Jeep tour. Hike the Red Canion. Dive into the Red Sea to see the coral reef. See Eilat’s most celebrated attractions: the Coral Beach Nature Reserve and Conservation Area, swim with the dolphins at the Dolphin Reef, spend a day birdwatching at the International Birding and Research Center Eilat, take pictures of Solomon’s Pillars in Timna Valley Park, and gaze at the fish at the Coral World Underwater Observatory.

Number of Bedrooms

322

Food and Beverage Information

Restaurant, Snack Bar and Lobby bar

Number of Meeting Rooms

-

Meeting Room Capacity Max

-

Hotel Contact Information

+972 35 110000

info@fattal.co.il

U Splash Resort Eilat



AT A GLANCE

Hotel City

Eilat

Hotel Address

39, Eilat, 88000, Israel, 88000 Eilat

Nearby Landmarks/Transport Links

U Splash Resort Eilat is in the Southern Negev Desert, 5 kilometers from Eilat and 15 kilometers from Ramon Airport. Guests can access attractions like the famous Eilat Coral Beach Nature Reserve, the Dolphin Reef, the Eilat Botanical Garden, Timna Valley, and other impressive landmarks within short drives from the resort.

Number of Bedrooms

279

Food and Beverage Information

Lobby bar, chips bar & restaurant

Number of Meeting Rooms

-

Meeting Room Capacity Max

-

Hotel Contact Information

+972 35 110000

info@fattal.co.il

Leonardo Plaza Hotel Haifa



AT A GLANCE

Hotel City

Haifa

Hotel Address

David Elazar Street 10, 3508107 Haifa

Nearby Landmarks/Transport Links

Must-see attractions include the Bahá’í Gardens at the Bahá’í World Centre – also known as the Hanging Gardens of Haifa, the National Museum of Science, Technology, and Space MadaTech, Mount Carmel National Park where you can hike among archaeological sites, the Tikotin Museum of Japanese Art, the German Colony, and Stella Maris Monastery on Mount Carmel among many other landmarks.

Number of Bedrooms

165

Food and Beverage Information

Coral Restaurant & Lobby Bar

Number of Meeting Rooms

3

Meeting Room Capacity Max

200

Hotel Contact Information

+972 35 110000

info@fattal.co.il

Herods Herzliya Hotel



AT A GLANCE

Hotel City

Herzliya

Hotel Address

11 HaOgen Street, 4655112 Herzliya

Nearby Landmarks/Transport Links

At Herods Herzliya, you are steps from the Herzog Promenade, which is lined up by some of the city’s best restaurants and shopping venues. The best beaches of Herzliya Pituah are a stone’s throw away, and other must-see attractions include the Apollonia National Park, the Herzliya Museum of Contemporary Art, and the Herzliya Park.

Number of Bedrooms

252

Food and Beverage Information

Sunset Restaurant & Pool bar

Number of Meeting Rooms

3

Meeting Room Capacity Max

140

Hotel Contact Information

+972 35 110000

info@fattal.co.il

Leonardo Boutique Hotel Jerusalem



AT A GLANCE

Hotel City
Jerusalem

Hotel Address
Monbaz 3, 9515003 Jerusalem

Nearby Landmarks/Transport Links
The location of the hotel makes it easy for guests to visit iconic landmarks like the Old City and the Western Wall, the Israel Museum, Yad Vashem – commemorating the victims of the Holocaust, and the Tower of David, among many other attractions. Guided tours are highly recommended to take in as much as the treasures of Jerusalem as possible.

Number of Bedrooms
74

Food and Beverage Information
Restaurant

Number of Meeting Rooms
1

Meeting Room Capacity Max
90

Hotel Contact Information
+972 35 110000
info@fattal.co.il

Leonardo Hotel Jerusalem



AT A GLANCE

Hotel City
Jerusalem

Hotel Address
Saint George Street 9, 9720911 Jerusalem

Nearby Landmarks/Transport Links
There’s a Jerusalem Light Rail station right next to the hotel, which will take you as far as the Central Bus Station, enabling you to reach all the important sights of the city within minutes. Some of the most interesting attractions recommended when you vacation at Leonardo Jerusalem include The Museum for Islamic Art, the Bible Lands Museum, the Tower of David, the Old City, and the Western Wall, the Israel Museum, and Yad Vashem – the Hill of Remembrance, which honors the victims of the Holocaust. Or visit the Mahane Yehuda Market – commonly referred to as the Shuk – Jerusalem’s main shopping destination, for a taste of authentic local lifestyle. Besides shopping opportunities, you will have a true foodie experience here, as the market is surrounded by food stands, bars, restaurants, and cafes.

Number of Bedrooms
398

Food and Beverage Information
Ramar Restaurant & Lobby Bar

Number of Meeting Rooms
7

Meeting Room Capacity Max
350

Hotel Contact Information
+972 35 110000
info@fattal.co.il

Leonardo Plaza Hotel Jerusalem



AT A GLANCE

Hotel City
Jerusalem

Hotel Address
Harav Avida 1, Jerusalem

Nearby Landmarks/Transport Links
Leonardo Plaza Jerusalem is suitable for both business and leisure stays. There’s so much to do and see when you stay with us. The Israel Museum is one of the top attractions of the city, attracting over a million visitors annually. The Mount of Olives has countless landmarks worth seeing most of them of religious nature. Yad Vashem, the Mount of Remembrance, which honors the victims of the Holocaust, is another must-see. The list is long and full of meaningful sites. It’s worth it to plan a long vacation in Jerusalem.

Number of Bedrooms
269

Food and Beverage Information
Cardo Restaurant & Primevara

Number of Meeting Rooms
3

Meeting Room Capacity Max
600

Hotel Contact Information
+972 35 110000
info@fattal.co.il

Leonardo Hotel Plaza Netanya



AT A GLANCE

Hotel City
Netanya

Hotel Address
Ussishkin Street 1, Netanya, Israel, Netanya

Nearby Landmarks/Transport Links
One of the top attractions close to Leonardo Plaza Netanya is the Planetanya, a planetarium with a Japanese garden – perfect for children and adults alike. Sironit Beach and Netanya Beach with its famous elevator are steps away from the hotel. The Iris Reserve is an outstanding experience for lovers of nature, who could also choose to hike in the Poleg Nature Reserve along the Nahal Poleg River. The Art Complex at the Shaked Promenade, the Museum of Yemenite Jews Heritage, and the Beit Habe'er (Well House) Museum are other must-see attractions of Netanya.

Number of Bedrooms
152

Food and Beverage Information
Restaurant

Number of Meeting Rooms
1

Meeting Room Capacity Max
600

Hotel Contact Information
+972 35 110000
info@fattal.co.il

Leonardo City Tower Hotel Tel Aviv Ramat Gan



AT A GLANCE

Hotel City

Ramat Gan

Hotel Address

Zisman Shalom St 14, Ramat Gan, Israel, 5252903 Ramat Gan

Nearby Landmarks/Transport Links

There's plenty to do in Ramat Gan. The city has a wealth of museums and galleries, while the Ramat Gan National Park and the Zoological Centre Tel Aviv-Ramat Gan, known colloquially as Safari Ramat Gan, are must-see attractions. With escape rooms and educational exhibitions, the Man and the Living Museum is a Ramat Gan destination for the entire family.

Number of Bedrooms

167

Food and Beverage Information

Arugula Restaurant & Tapesta Restaurant

Number of Meeting Rooms

7

Meeting Room Capacity Max

80

Hotel Contact Information

+972 35 110000
info@fattal.co.il

Herods Tel Aviv Hotel



AT A GLANCE

Hotel City

Tel Aviv

Hotel Address

152 HaYarkon Street, Tel Aviv

Nearby Landmarks/Transport Links

The entire city is a must-see, but if you are short for time, here are some of our top recommendations: the Port of Tel Aviv, the White City Centre, Jaffa Old Town, Carmel Market, the Tel Aviv Museum of Art, and the Neve Tzedek district.

Number of Bedrooms

324

Food and Beverage Information

Restaurant

Number of Meeting Rooms

3

Meeting Room Capacity Max

280

Hotel Contact Information

+972 35 110000
info@fattal.co.il

Leonardo Boutique Hotel Rehovot



AT A GLANCE

Hotel City

Rehovot

Hotel Address

Prof. Hillel ve-Khanan Oppenheimer 2, Rehovot, Israel, 7670102 Rehovot

Nearby Landmarks/Transport Links

Within a stone's throw of the Weizmann Institute of Science, Leonardo Boutique Rehovot is also close to other remarkable Rehovot attractions including the Clore Garden of Science Museum, the Rehovot Municipal Art Gallery, the Ayalon Institute Museum, the Ohel Sarah Synagogue, the Josephson House, and the Barkan Winery at Hulda kibbutz.

Number of Bedrooms

116

Food and Beverage Information

Restaurant

Number of Meeting Rooms

2

Meeting Room Capacity Max

25

Hotel Contact Information

+972 35 110000
info@fattal.co.il



Leonardo Plaza Hotel , Tiberias Meeting Room

Leonardo Boutique Hotel Tel Aviv



AT A GLANCE

Hotel City

Tel Aviv

Hotel Address

HaBarzel Street 17, Tel Aviv-Yafo, Israel, 6971023 Tel Aviv

Nearby Landmarks/Transport Links

The location allows corporate travelers to access the fairground complex Expo Tel Aviv in just ten minutes by car. Near the hotel, there are many shopping opportunities, including the high-end Ramat Aviv mall for fashion and accessories and Shuk Tzafon – the North Market – a new foodie experience, which opened its doors in 2016.

Number of Bedrooms

166

Food and Beverage Information

Restaurant & Lobby Bar

Number of Meeting Rooms

Meeting Room Capacity Max

Hotel Contact Information

Hotel Rothschild 22 Tel Aviv



AT A GLANCE

Hotel City

Tel Aviv

Hotel Address

22 Rothschild Boulevard, 6688218 Tel Aviv

Nearby Landmarks/Transport Links

You can rent a bike – free of charge – from the hotel to explore the neighborhood. See the UNESCO-listed White City of Tel Aviv, adventure further to discover the always-lively Saron neighbourhood with its foodie market or take in the smells and sounds of the world-famous Shuk HaCarmel, go shopping on Tuesdays and Fridays at the Art Fair on the pedestrian Nahalat Binyamin Street, see a museum, and finally, take your bike and pedal along the Tayelet, the promenade, which follows the coastline of the Mediterranean along the pristine beaches of the city.

Number of Bedrooms

156

Food and Beverage Information

Gallery 22

Number of Meeting Rooms

-

Meeting Room Capacity Max

-

Hotel Contact Information

+972 35 110000
info@fattal.co.il

Leonardo Beach Hotel Tel Aviv



AT A GLANCE

Hotel City

Tel Aviv

Hotel Address

HaYarkon 156, Tel Aviv-Yafo, Israel, 6345115 Tel Aviv

Nearby Landmarks/Transport Links

There's a lot to do when you stay with at Leonardo Beach Tel Aviv: ride a bike on the promenade, play beach volleyball, try your balance on a SUP board or practice other watersports by the beach, go shopping on the Dizengoff Street – which is just around the corner, and visit Tel Aviv's top cultural and historic landmarks.

Number of Bedrooms

134

Food and Beverage Information

Restaurant & Lobby Bar

Number of Meeting Rooms

3

Meeting Room Capacity Max

140

Hotel Contact Information

+972 35 110000
info@fattal.co.il

Leonardo Gordon Beach Tel Aviv



AT A GLANCE

Hotel City

Tel Aviv

Hotel Address

Eliezer Peri Street 9, Tel Aviv-Yafo, Israel, 6357324 Tel Aviv

Nearby Landmarks/Transport Links

On Tel Aviv's most famous beach, next to a promenade buzzing with people, you are invited to settle into a hotel that completely redefines the “urban vacation” concept. The Leonardo Gordon Beach presents everything you need to relax, unwind, and stay in touch with the vibrant urban scene, including spacious guest suites, professional work areas, deluxe conference rooms, and the popular lobby bar. For truly exceptional leisure, visit the dreamlike hotel rooftop, with its palatial swimming pool and stunning views of the Mediterranean and dynamic Tel Aviv cityscape – all just waiting to be explored.

Number of Bedrooms

156

Food and Beverage Information

Restaurant & Lobby Bar

Number of Meeting Rooms

2

Meeting Room Capacity Max

250

Hotel Contact Information

+972 03 5211777
info@fattal.co.il

U Boutique Kinneret Hotel Tiberias



AT A GLANCE

Hotel City

Tiberias

Hotel Address

Gdud Barak 1, Tiberias, Israel, Tiberias

Nearby Landmarks/Transport Links

Vacationers here are just steps from the most sought-after destinations of the north: hikes in the Golan Heights, the natural park and reserve on Mount Arbel; or more specific attractions like the Church of the Primacy of Saint Peter and the Church of the Multiplication of the Loaves and Fish in Tabgha, and the Ancient Galilee Boat in the Yigal Allon Museum in Kibbutz Ginosar.

Number of Bedrooms

62

Food and Beverage Information

U Restaurant & Lobby Bar

Number of Meeting Rooms

-

Meeting Room Capacity Max

-

Hotel Contact Information

+972 35 110000
info@fattal.co.il

Leonardo Plaza Hotel Tiberias



AT A GLANCE

Hotel City

Tiberias

Hotel Address

Banim 1, Tiberias, Israel, Tiberias

Nearby Landmarks/Transport Links

Leonardo Plaza Tiberias is in the center of Tiberias, facing the promenade and the Sea of Galilee. This setting gives guests the ideal starting point to explore the area and quick access to some of the most sought-after destinations of the North: the Gospel Trail, the hot springs of Hamat Gader, the Mount of Beatitudes, the Yardenit baptismal site, and the Capernaum National Park, among others.

Number of Bedrooms

262

Food and Beverage Information

Main Restaurant & Lobby Bar

Number of Meeting Rooms

4

Meeting Room Capacity Max

500

Hotel Contact Information

+972 35 110000
info@fattal.co.il

Leonardo Hotel Tiberias



AT A GLANCE

Hotel City

Tiberias

Hotel Address

17 Gdud Barak Street, Tiberias

Nearby Landmarks/Transport Links

Set among picturesque landscapes close to the idyllic Sea of Galilee, Leonardo Tiberias is just a few minutes from the most fascinating attractions of the northeast Israel, starting with the Mount of Beatitudes, and on to the Capernaum National Park, then the Beth Yerah tell, the Bethsaida in the Golan Heights, and the kibbutz in the Plain of Ginosar, among others.

Number of Bedrooms

198

Food and Beverage Information

Restaurant & Lobby Bar

Number of Meeting Rooms

-

Meeting Room Capacity Max

-

Hotel Contact Information

+972 35 110000
info@fattal.co.il

Leonardo Club Hotel Tiberias



AT A GLANCE

Hotel City

Tiberias

Hotel Address

Banim 1, Tiberias, Israel, Tiberias

Nearby Landmarks/Transport Links

There's an opportunity for bathing in hot thermal springs at Hamat Gader, pilgrim walking on the Gospel Trail, visiting the baptismal site Yardenit and the sacred sites at Capernaum and the Mount of Beatitudes. You can go horseback riding around the Sea of Galilee or choose a water sport to pass the time on the lake.

Number of Bedrooms

398

Food and Beverage Information

Restaurant

Number of Meeting Rooms

-

Meeting Room Capacity Max

-

Hotel Contact Information

+972 35 110000
info@fattal.co.il



Leonardo Royal Resort Hotel Eilat



AT A GLANCE

Hotel City
Eilat

Hotel Address
North Beach, Eilat, Israel, Eilat

Nearby Landmarks/Transport Links
Outside the hotel, Eilat beckons with a wealth of shopping and dining opportunities, but also with world-famous attractions like the Coral Beach Nature Reserve and Conservation Area and the Coral World Underwater Observatory, both showing the miraculous underwater world of the Red Sea. Another fascinating pastime in Eilat is birdwatching at the International Birding and Research Centre. Many travelers enjoy the beaches with all their watersports opportunities, while others prefer Jeep tours in the Negev Desert.

Number of Bedrooms
228

Food and Beverage Information
Restaurant & Lobby Bar

Number of Meeting Rooms
1

Meeting Room Capacity Max
180

Hotel Contact Information
+972 35 110000
info@fattal.co.il





AT A GLANCE

Hotel City

Safed

Hotel Address

106 HaGdud HaShlishi Street, Safed

Nearby Landmarks

A climb up Mount Canaan and a short passage through the alleys that tells the story of the city of Safed will lead you to the top of the mountain from where you will have an unforgettable view of ancient Safed, the magical Sea of Galilee, the impressive Mount Meron and the unique natural treasures next to the hotel.

Number of Bedrooms

119

F&B Information

Restaurant and Bar

Number of Meeting Rooms

4

Meeting Room Capacity Max

150

Hotel Contact Information

<https://www.canaan-hotel.co.il/>

+972 46993000

info@fattal.co.il

Hotel Canaan | Safed

FATTAL *Limited Edition*

This luxury hotel from the Fattal Limited Edition Collection is situated at the summit of Mount Canaan, overlooking the breathtaking Galilee region, ancient Safed, Mount Meron, and the famous Sea of Gailee. Its “Slow Stay” concept encourages guests to disengage from hectic modern life and rediscover the connection between body and soul. Guests are also invited to enjoy workshops, tours, and special activities, as well as delicious Galilean cuisine and relaxing treatments in the spa complex, which includes a Turkish bath, infrared sauna, dry sauna, jacuzzi, 360° hydro-massage showers, and more.





NYX Hotel Herzliya



AT A GLANCE

Hotel City
Herzliya

Hotel Address
19 Abba Eban Boulevard, Herzliya

Nearby Landmarks/Transport Links
You'll be steps from the beach and the promenade, where you can shop till you drop and enjoy a wealth of dining opportunities with views of the marina. Other must-see attractions include the Apollonia National Park, the Herzliya Museum of Contemporary Art, and Herzliya Park.

Number of Bedrooms
179

Food and Beverage Information
Clash Bar & Restaurant

Number of Meeting Rooms
2

Meeting Room Capacity Max
180

Hotel Contact Information
+972 35 110000
info@fattal.co.il



NYX Hotel Tel Aviv



AT A GLANCE

Hotel City
Tel Aviv

Hotel Address
38 HaRakevet Street, Tel Aviv

Nearby Landmarks/Transport Links
Staying at NYX Tel Aviv means being close to the vibrant nightlife of the city, steps away from some of the best bars and nightclubs. By day, there's shopping galore at Sarona Market, Tel Aviv Fashion Mall, Azrieli Mall, and the boutiques scattered all around the famous Neve Tzedek neighborhood. You can visit many museums during your stay, including the Hagana Museum and the Tel Aviv Museum of Art. We offer a free shuttle from the hotel to the beach if you want to relax gazing at the Mediterranean.

Number of Bedrooms
190

Food and Beverage Information
NYX Burger Restaurant

Number of Meeting Rooms
-

Meeting Room Capacity Max
-

Hotel Contact Information
+972 35 110000
info@fattal.co.il

Netherlands

● Leonardo Hotels ● Leonardo Royal Hotels ● Leonardo Boutique Hotels



Leonardo Boutique Museum Hotel Amsterdam City Center



AT A GLANCE

Hotel City
Amsterdam

Hotel Address
P. C. Hooftstraat 2, 1071 BX Amsterdam

Nearby Landmarks/Transport Links
Nestled in the heart of Museum Quarter, Leonardo Boutique Hotel is located right next to the Rijksmuseum, Van Gogh Museum and Stedelijk Museum! Exploring the creative world of art has never been easier. End your day at charming bars and restaurants in the bustling Pijp area, or wander along the canals to discover the ancient city. For shopping enthusiasts, the world's renowned boutique brands await on PC Hooftstraat, right at the doorstep of this Boutique Hotel.

Number of Bedrooms
188

Food and Beverage Information
Coffeeboutique Roasters & Toasters

Hotel Contact Information
+31 20 6621402
info.museum@leonardo-hotels.nl

Leonardo Hotel Almere City Center



AT A GLANCE

Hotel City
Almere

Hotel Address
Koetsierbaan 2, 1315 SE Almere

Nearby Landmarks/Transport Links
The hotel is located right next to the city theatre and close to the various restaurants, cafés and shops of Almere. Public transport is a stone's throw away from the hotel and we have an underground car park. Schiphol Airport and the lively cities of Amsterdam and Utrecht are just a short drive away. But once here, you will find that there is plenty to explore, such as the nearby Oostvaardersplassen.

Number of Bedrooms
117

Food and Beverage Information
Bierfabriek (Beergarden)

Number of Meeting Rooms
4

Meeting Room Capacity Max
300

Hotel Contact Information
+31 36 5274500
reception.almere@leonardo-hotels.nl

Leonardo Hotel Amsterdam City Center



AT A GLANCE

Hotel City
Amsterdam

Hotel Address
Tesselschadestraat 23, 1054 ET Amsterdam

Nearby Landmarks/Transport Links
Located right in the heart of the action, you'll find Leonardo Hotel City Centre! Stepping outside the door, your options are boundless. Fancy a drink at the renowned Leidseplein square in Amsterdam? Perhaps a day of shopping in the charming 9 Little Streets with its boutique shops, or along The Kalverstraat boasting the world's leading brands? Moreover, the Heineken Experience, the floating Flower Market, and numerous other city highlights await just around the corner!

Number of Bedrooms
103

Food and Beverage Information
Breakfast Restaurant

Hotel Contact Information
+31 20 6126876
info.amsterdamcity@leonardo-hotels.nl

Leonardo Hotel Amsterdam Rembrandtpark



AT A GLANCE

Hotel City
Amsterdam

Hotel Address
Staalmeesterslaan 410, 1057 PH Amsterdam

Nearby Landmarks/Transport Links
Just a short tram ride away from Amsterdam's city center, Leonardo Hotel Rembrandtpark offers guests an amazing experience for an unforgettable stay. In addition to its numerous meeting rooms and inviting open lobby, the hotel boasts an exceptional dining experience on the top floor at Floor17. Enjoy amazing views of the city's skyline from the rooftop terrace. Moreover, the hotel is only a 15-minute ride away from Schiphol Airport.

Number of Bedrooms
446

Food and Beverage Information
Floor17 Rooftop Restaurant and Bar

Number of Meeting Rooms
5

Meeting Room Capacity Max
100

Hotel Contact Information
+31 20 2070000
info.rembrandtpark@leonardo-hotels.nl

Leonardo Hotel Breda City Center



AT A GLANCE

Hotel City
Breda

Hotel Address
Stationsplein 14, 4811 BB Breda

Nearby Landmarks/Transport Links
Situating next door to Breda Central Station and with private car-parking directly outside the hotel, arriving at the Leonardo Breda City Center is simple. Even if the primary purpose of your trip is business, at just 10-minutes' walk from the vibrant city centre, including the famous Grote Markt, there are plenty of opportunities to explore Breda for yourself. You can even take a tip from the Dutch and hire a bike to explore the charming city on two wheels, or enjoy a jog through the beautiful Valkenberg park close to the hotel.

Number of Bedrooms
88

Food and Beverage Information
Restaurant and Bar

Number of Meeting Rooms
12

Meeting Room Capacity Max
150

Hotel Contact Information
+31 76 5220200
info.breda@leonardo-hotels.nl

Leonardo Hotel Groningen



AT A GLANCE

Hotel City
Groningen

Hotel Address
Laan van de Vrijheid 91, 9728 GA Groningen

Nearby Landmarks/Transport Links
In terms of location, the Leonardo Hotel Groningen is ideally placed next to the MartiniPlaza arena and city park, an easy 20-minute walk or 12-minute cycle to the historic centre where you can admire landmarks including the Martinitoren church tower and the Groninger Museum. There are also multiple cycling routes that will guide visitors out into the beautiful surrounding countryside – to make life even easier bike hire is available from the hotel's reception.

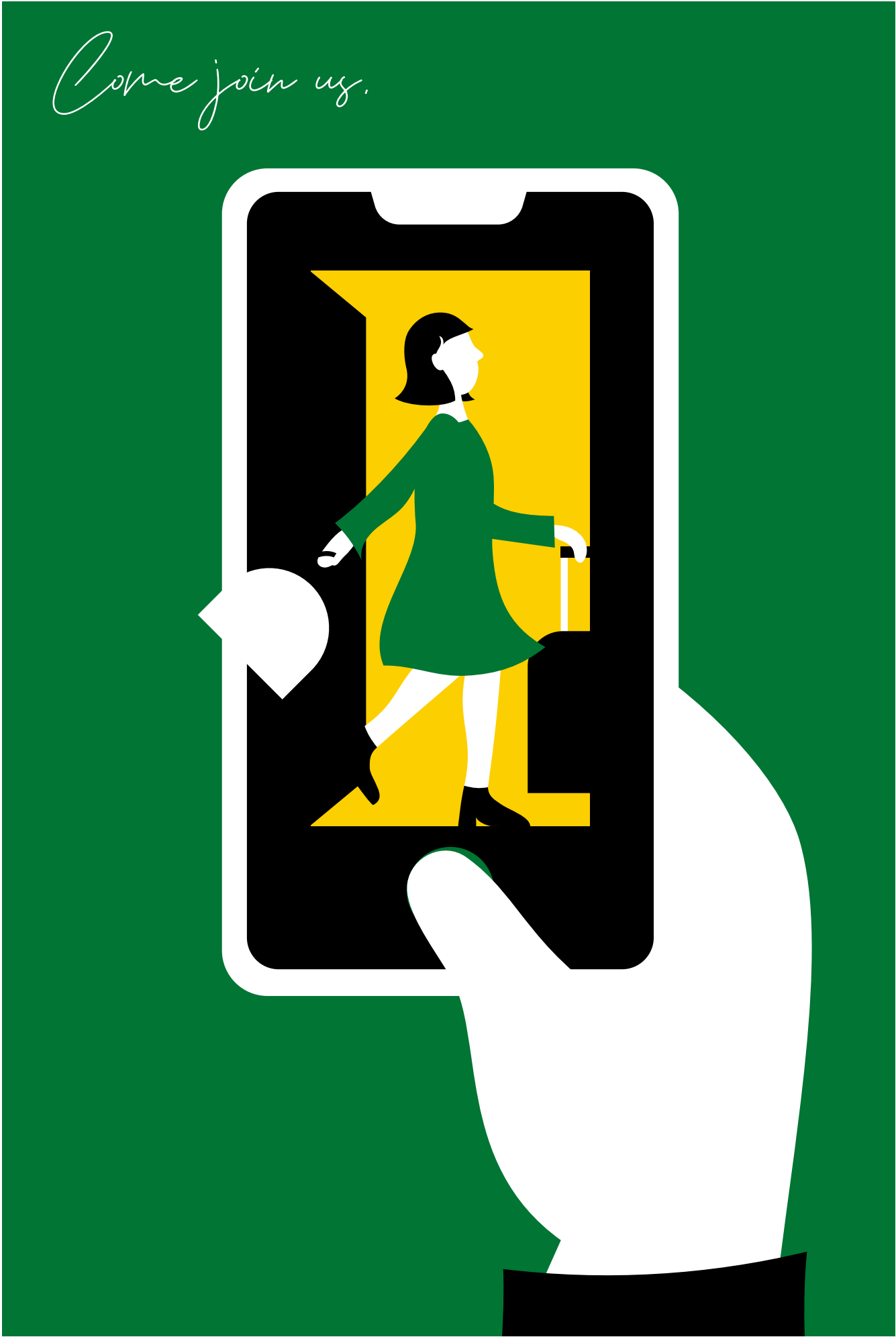
Number of Bedrooms
105

Food and Beverage Information
Chef's! Restaurant & Bar

Number of Meeting Rooms
2

Meeting Room Capacity Max
70

Hotel Contact Information
+31 50 7630070
info.groningen@leonardo-hotels.nl



Leonardo Hotel IJmuiden Seaport Beach



AT A GLANCE

- Hotel City**
IJmuiden
- Hotel Address**
Kennemerboulevard 250, 1976 EG IJmuiden
- Nearby Landmarks/Transport Links**
Experience the perfect mix of two worlds with Leonardo Hotel IJmuiden. Situated in close proximity to Amsterdam's renowned attractions, yet close to nature. This setting provides an ideal venue for hosting meetings and events while also allowing guests to seamlessly integrate visits to the area's famous landmarks, including the UNESCO World Heritage site, Fort IJmuiden.
- Number of Bedrooms**
146
- Food and Beverage Information**
Chef's! Restaurant & Bar
- Number of Meeting Rooms**
14
- Meeting Room Capacity Max**
400
- Hotel Contact Information**
+31 25 5566999
info.ijmuiden@leonardo-hotels.nl

Leonardo Hotel Lelystad City Center



AT A GLANCE

- Hotel City**
Lelystad
- Hotel Address**
Agoraweg 11, 8224 BZ Lelystad
- Nearby Landmarks/Transport Links**
Located in the heart of Lelystad, next door to the futuristic Agora Theatre and just a five-minute walk from the train station, Leonardo Hotel Lelystad City Center is the ideal hub for business and leisure travel. From the hotel, the area's prime attractions are easily accessible. Think for example of world-famous Batavia Stad, offering an array of high-end brands at enticing prices. Keen on renting a bike from us? No problem! We recommend you to explore the region's incredible nature, the Oostvaardersplassen nature reserve which is just a 30-minute cycle away!
- Number of Bedrooms**
86
- Food and Beverage Information**
Breakfast Restaurant & Bar
- Number of Meeting Rooms**
3
- Meeting Room Capacity Max**
250
- Hotel Contact Information**
+31 32 0242444
info.lelystad@leonardo-hotels.nl

Leonardo Hotel Papendrecht



AT A GLANCE

Hotel City

Papendrecht

Hotel Address

Burgemeester Keijzerweg 100, 3353 CW Papendrecht

Nearby Landmarks/Transport Links

Experience the authentic Dutch countryside like never before at Leonardo Hotel Papendrecht! Situated in close proximity to the charming Drecht countryside and the iconic village of Kinderdijk, renowned for its bike trails, footpaths, and waterways that lead to the famous 18th-century windmills. Craving something livelier? A short drive will transport you to the vibrant sights and sounds of Rotterdam city center!

Number of Bedrooms

97

Food and Beverage Information

Chef's! Restaurant & Bar

Number of Meeting Rooms

12

Meeting Room Capacity Max

350

Hotel Contact Information

+31 78 6152099

info.papendrecht@leonardo-hotels.nl

Leonardo Hotel Vinkeveen Amsterdam



AT A GLANCE

Hotel City

Amsterdam

Hotel Address

Groenlandsekade 1, 3645 BA Amsterdam

Nearby Landmarks/Transport Links

Prepare for a hotel experience with the real WOW-factor! Welcome to Leonardo Hotels Vinkeveen, where you'll discover more than just a place to stay. We're referring to being conveniently located under the same roof as The Harbour Club and Event Centre Vinkeveen, right by the Vinkeveense Plassen. Sip a drink at Vinki Beach or enjoy an exquisite dinner at The Harbour Club. Our event planners at Event Centre Vinkeveen specialize in one-of-a-kind meetings and events, perfectly blending business with boundless enjoyment!

Number of Bedrooms

86

Food and Beverage Information

The Harbour Club Vinkeveen Restaurant & Bar

Number of Meeting Rooms

11

Meeting Room Capacity Max

450

Hotel Contact Information

+0297 784 910

info.vinkeveen@leonardo-hotels.nl

Leonardo Hotel Utrecht City Center



AT A GLANCE

Hotel City

Utrecht

Hotel Address

Vredenburg 14, 3511 BA Utrecht

Nearby Landmarks/Transport Links

Perfectly situated in the heart of Utrecht's city center, right at the doorstep of iconic landmarks, Leonardo Hotel Utrecht City Center stands as the perfect choice for those seeking to embrace the best of the Netherlands. Its close proximity to the famous Oudegracht canal, along with the vibrant Tivoli Vredenburg nightlife district, positions Leonardo Hotel Utrecht City Center as the most centrally located hotels in Utrecht.

Number of Bedrooms

90

Food and Beverage Information

Breakfast Restaurant

Number of Meeting Rooms

1

Meeting Room Capacity Max

12

Hotel Contact Information

+31 30 2331232

info.utrecht@leonardo-hotels.nl





Leonardo Royal Hotel Amsterdam



AT A GLANCE

Hotel City

Amsterdam

Hotel Address

Paul van Vlissingenstraat 24, 1096 BK Amsterdam

Nearby Landmarks/Transport Links

Leonardo Royal Hotel Amsterdam is the perfect location for any meeting, event or group gathering. The state-of-the-art meeting facilities and the modern rooms offer everything for both small board meetings and large gala dinners. With the metro right in front of the hotel and access to motorway A10, business and leisure travelers will easily find their way to the city center, RAI Convention Center and Schiphol Airport.

Number of Bedrooms

490

Food and Beverage Information

Leo's Restaurant and Bar

Number of Meeting Rooms

11

Meeting Room Capacity Max

800

Hotel Contact Information

+020 250 0000
info.royalamsterdam@leonardo-hotels.nl



Come join us.

Leonardo Royal Hotel Amsterdam



Leonardo Royal Hotel Den Haag Promenade



AT A GLANCE

Hotel City

Den Haag

Hotel Address

Van Stolkweg 1, 2585 JL Den Haag

Nearby Landmarks/Transport Links

Leonardo Royal Hotel Den Haag Promenade is situated between the dynamic Scheveningen, the embassy district and the centre of the Royal City. Within walking distance of the hotel, you will find the World Forum, the Peace Palace, the Omniversum and miniature city Madurodam. The hotel is directly accessible by public transport through the tram stop right in front of the hotel. Do you prefer to come by car? The hotel is easily accessible via the highways A12 and A44, and you can easily park in our private car park with 175 parking spaces.

Number of Bedrooms

178

Food and Beverage Information

Leo's Restaurant and Bar

Number of Meeting Rooms

10

Meeting Room Capacity Max

600

Hotel Contact Information

+31 70 352 5161

info.royaldenhaag@leonardo-hotels.nl



Leonardo Royal Hotel Den Haag Promenade

Belgium

● Leonardo Hotels



Leonardo Hotel Antwerpen



AT A GLANCE

Hotel City

Antwerp

Hotel Address

De Keyserlei 59, 2018 Antwerpen

Nearby Landmarks/Transport Links

Leonardo Hotel Antwerpen is situated opposite the main train station, with easy access to many of the city's finest attractions, including the Old Town, Antwerp Zoo, Rubens' House, as well as the top boutiques and stores that define this city as Belgium's fashion capital..

Number of Bedrooms

108

Food and Beverage Information

Breakfast Restaurant & Bar

Number of Meeting Rooms

-

Meeting Room Capacity Max

-

Hotel Contact Information

+0032 32321443
info.antwerpen@leonardo-hotels.be

Leonardo Antwerp The Plaza



AT A GLANCE

Hotel City

Antwerp

Hotel Address

Charlottalei 49, 2018 Antwerpen

Nearby Landmarks/Transport Links

Set in the vibrant Diamond Quarter, Leonardo Hotel Antwerp the Plaza is just a 10-minute walk from the bustling city centre. Freshly renovated, the lobby exudes a welcoming vibe with flexible workspaces for guests. The rooms offer generous space and modern luxury, ensuring a comfortable stay. Whether for leisure or business, Leonardo Hotel Antwerp the Plaza is an ideal choice for a dynamic and chic experience.

Number of Bedrooms

87

Food and Beverage Information

Breakfast Restaurant & Bar

Number of Meeting Rooms

1

Meeting Room Capacity Max

20

Hotel Contact Information

+0032 32872870
info.antwerptheplaza@leonardo-hotels.be

Spain

- Leonardo Hotels
- Leonardo Royal Hotels
- Leonardo Boutique Hotels
- NYX Hotels by Leonardo Hotels



Leonardo Fuengirola Costa Del Sol

AT A GLANCE

Hotel City
Fuengirola

Hotel Address
Calle Dr. Galvez Ginachero, s/n, 29640 Fuengirola,
29640 Fuengirola

Nearby Landmarks/Transport Links
The Leonardo Hotel Fuengirola Costa Del Sol is located in the centre of Fuengirola with most of the rooms facing the Mediterranean Sea and offering spectacular views over the beaches of Fuengirola. Only a 25 minute drive away and 30 minutes by train from the city of Malaga, the hotel is perfectly connected and guests can choose between long calm stays at the beach or more vibrant day trips to the city. You will also be able to reach the airport in only 25 minutes by car.

Number of Bedrooms
184

Food and Beverage Information
Restaurants & Miami Bar & Nelson Pub

Number of Meeting Rooms
2

Meeting Room Capacity Max
135

Hotel Contact Information
+34 952 92 27 00
info.fuengirola@leonardo-hotels.com



Leonardo Granada



AT A GLANCE

Hotel City
Granada

Hotel Address
Avenida de la Constitución 18, 18012 Granada

Nearby Landmarks/Transport Links
Situating in the centre of this stunning Andalusian city, the Leonardo Hotel Granada is the ideal base from which to explore the region. The hotel’s 177 rooms all offer views of the city’s beautiful medieval rooftops, with many also looking out to the Sierra Nevada mountains and the iconic Alhambra Palace in the near distance.

Number of Bedrooms
177

Food and Beverage Information
Restaurants and Bar

Number of Meeting Rooms
5

Meeting Room Capacity Max
450

Hotel Contact Information
+34 958 204 061
info.granada@leonardo-hotels.com

Leonardo Madrid City Center



AT A GLANCE

Hotel City
Madrid

Hotel Address
Calle de Alberto Aguilera 18, 28015 Madrid

Nearby Landmarks/Transport Links
Situating on a pretty tree-lined street in the Chamberí district, the hotel is ideally situated for those who wish to explore the Spanish capital, as well as those visiting the city on business. Located just 10 minutes’ walk from many of the city’s vibrant areas, including the Gran Vía, Paseo de la Castellana and Plaza de Colón, you’ll also find sights including the Prado Museum and the Temple of Debod easily accessible via public transport.

Number of Bedrooms
153

Food and Beverage Information
Breakfast restaurant and Bar

Number of Meeting Rooms
2

Meeting Room Capacity Max
70

Hotel Contact Information
+34 914 46 09 0000
info.madridcity@leonardo-hotels.com

Leonardo Barcelona Las Ramblas



AT A GLANCE

Hotel City
Barcelona

Hotel Address
Carrer de la Junta de Comerç 8,10,12, 08001 Barcelona

Nearby Landmarks/Transport Links
Located right in the heart of the vibrant city centre, Leonardo Hotel Barcelona Las Ramblas is the perfect place for families, city tourists and business travellers wanting a great base to explore Catalonia’s capital, as well as a stylish space to relax and unwind. Visit during the warmer months to make the most of the hotel’s rooftop pool and terrace.

Number of Bedrooms
111

Food and Beverage Information
Breakfast restaurant & Bar

Hotel Contact Information
+34 933 18 89 70
info.ramblas@leonardo-hotels.com

Leonardo Barcelona Gran Via



AT A GLANCE

Hotel City
Barcelona

Hotel Address
Carrer de la Diputació 100, 08015 Barcelona

Nearby Landmarks/Transport Links
Leonardo Hotel Barcelona Gran Via is centrally located in La Nova Esquerra de l’Eixample, between Plaça Espanya and the heart of the city. Just a 15-minute walk from Sants train station, a stay in the hotel puts you close to a number of the city’s iconic sights including the well-known Fonts de Montjuïc fountains, with its beautiful show of light and water. Those travelling for business will appreciate the hotel’s convenient location near the Fira Barcelona Montjuïc exhibition centre, which is just a 15-minute walk or 7-minute metro ride away.

Number of Bedrooms
100

Food and Beverage Information
Breakfast restaurant and Bar

Number of Meeting Rooms
1

Meeting Room Capacity Max
130

Hotel Contact Information
+34 935 53 47 60
info.granvia@leonardo-hotels.com



Leonardo Royal Ibiza Santa Eulalia

including Leonardo Suites Ibiza Santa Eulalia



AT A GLANCE

Hotel City
Santa Eulalia del Río, Ibiza

Hotel Address
Carrer Pou Roig 1, 07849 Santa Eulària des Riu

Nearby Landmarks/Transport Links
Along the Es Canar beach in Santa Eulalia, the hotel invites you to enjoy a relaxing and care-free holiday. Enjoy a short walk along the seafront and discover many restaurants, bars, cafés and shops. And if you love shopping, don't miss the nearby Punta Arabí Hippie Market.

Number of Bedrooms
360 rooms + 82 suites

Food and Beverage Information
Restaurant and Bar

Number of Meeting Rooms
-

Meeting Room Capacity Max
-

Hotel Contact Information
leonardo-hotels.com
reservations.ibiza@leonardo-hotels.com



Leonardo Royal Mallorca

including Leonardo Suites Mallorca



AT A GLANCE

Hotel City
Palmanova, Mallorca

Hotel Address
Carrer Torrenova 1, 07181 Palmanova

Nearby Landmarks/Transport Links
With the beach just around the corner, you can choose whether you want to take a dip in the crystal blue sea or stay at the hotel's own pool while sunbathing. Alternatively, take part in the vivid nightlife of the neighbouring town Magaluf, which is known for its great parties.

Number of Bedrooms
229 rooms + 68 suites

Food and Beverage Information
Restaurant and Bar

Number of Meeting Rooms
-

Meeting Room Capacity Max
-

Hotel Contact Information
leonardo-hotels.com
reservations.mallorca@leonardo-hotels.com



Leonardo Royal Barcelona Fira



AT A GLANCE

Hotel City
Barcelona

Hotel Address
Carrer del Alts Forns 40, 08083 Barcelona

Nearby Landmarks/Transport Links
Leonardo Royal Hotel Barcelona Fira is just a short walk from the near attractions such as Jardí Botànic de Barcelona, Palau Sant Jordi, Olympic Stadium and Museums like Fundació Miró, MNAC, moreover only 3 stops away from Plaça d'Espanya. Business travellers will also enjoy the proximity to the congress centre Fira Barcelona (Congress Centre), reachable in just 5 minutes ride, and the impressive conference area with modern facilities, fast Wi-Fi and catering options. Whether you're looking for a hotel in Barcelona, Leonardo Royal Hotel Barcelona Fira will enrich every stay.

Number of Bedrooms
204

Food and Beverage Information
Restaurant Tramuntana & Bar

Number of Meeting Rooms
6

Meeting Room Capacity Max
220

Hotel Contact Information
+34 934 81 49 35
info.royalbarcelona@leonardo-hotels.com



Leonardo Royal Mallorca Palmanova Bay



AT A GLANCE

Hotel City
Palmanova, Mallorca

Hotel Address
Carrer Torrenova 3-5, 07181 Palmanova

Nearby Landmarks/Transport Links
Located in the quiet area of Palmanova, between the beaches of Palmanova and Magaluf and just 15 minutes from the city of Palma, the Leonardo Royal Hotel Mallorca Palmanova Bay is the perfect place for a care-free and relaxing holiday.

Number of Bedrooms
170

Food and Beverage Information
Buffet Restaurant and Bar

Number of Meeting Rooms
-

Meeting Room Capacity Max
-

Hotel Contact Information
leonardo-hotels.com
reservations.mallorca@leonardo-hotels.com

Leonardo Boutique Mallorca Port Portals



AT A GLANCE

Hotel City
Mallorca

Hotel Address
Avinguda Tomàs Blanes Tolosa 4, 07181 Palma de Mallorca

Nearby Landmarks/Transport Links
Located in one of Mallorca’s top locations, in Portals Nou, the Leonardo Boutique Mallorca Port Portals offers everything you need for a relaxed stay. With the luxurious yacht harbour of Port Portals and white sanded beaches just around the corner, it is up to you whether you want to spend the day at the beach or at the hotel’s own outdoor pool. By the pool, you have the choice of cooling down in the water or relaxing on one of the sunbeds or even one of the comfortable Balinese beds.

Number of Bedrooms
77

Food and Beverage Information
Restaurants and 2 Bars

Number of Meeting Rooms
3

Meeting Room Capacity Max
124

Hotel Contact Information
+34 971 67 59 56
info.boutiquemallorca@leonardo-hotels.com

Leonardo Boutique Barcelona Sagrada Familia



AT A GLANCE

Hotel City
Barcelona

Hotel Address
Carrer de Mallorca 606, 08026 Barcelona

Nearby Landmarks/Transport Links
Centrally located just 15 minutes from Antoni Gaudí’s spectacular La Sagrada Família church, one of Barcelona’s most iconic sights, the hotel is perfect for short city breaks and business stays, as well as longer holidays in Spain. Visitors will find themselves right in the middle of Catalonia’s vibrant capital, with a huge selection of lively bars, restaurants and beaches to choose from.

Number of Bedrooms
69

Food and Beverage Information
Breakfast restaurant

Hotel Contact Information
+34 932 314 258
info.sagradafam@leonardo-hotels.com



Leonardo Boutique Hotel Mallorca Port Portals Exterior

Leonardo Boutique Madrid



AT A GLANCE

Hotel City
Madrid

Hotel Address
Calle de Vallehermoso 65, 28015 Madrid

Nearby Landmarks/Transport Links
Located just a pleasant 30 minutes’ walk from the Gran Vía (Madrid’s historical main street), and 5 minutes from the Canal metro station, the Leonardo Boutique Madrid is the perfect base from which to explore the Spanish capital. Not only does it put guests in easy reach of many of the city’s top attractions, including the Royal Palace and the Puerta del Sol, you’ll also enjoy a stylishly decorated and extremely comfortable hotel with everything you might need for a city break to remember.

Number of Bedrooms
75

Food and Beverage Information
Breakfast restaurant

Number of Meeting Rooms
-

Meeting Room Capacity Max
-

Hotel Contact Information
+34 91 593 97 77
info.boutiquemadrid@leonardo-hotels.com



NYX Hotel Ibiza



AT A GLANCE

Hotel City
Sant Antoni de Portmany, Ibiza

Hotel Address
S/N Carrer de s'Embarcador, 07820 Sant Antoni de Portmany

Nearby Landmarks/Transport Links
The hotel is the perfect starting point for exploring the island and everything it has to offer. Whether visiting one of the famous hippie markets or trying out a new water sport or dancing until sunrise.

Number of Bedrooms
209

Food and Beverage Information
Restaurant and Bar

Number of Meeting Rooms
1

Meeting Room Capacity Max
60

Hotel Contact Information
leonardo-hotels.com
reservations.ibiza@leonardo-hotels.com



NYX Hotel Madrid



AT A GLANCE

Hotel City
Madrid

Hotel Address
Calle del Aviador Zorita 34, 28020 Madrid

Nearby Landmarks/Transport Links
NYX Madrid is also perfectly connected to Madrid's main tourist attractions. From the hotel you can conveniently plan your own tour of the city. However, if you want to see Madrid from a different perspective, our hotel staff, our City Lovers, will be your perfect tour guides to discover our "secret spots" of Madrid.

Number of Bedrooms
180

Food and Beverage Information
Bar Clash & Rooftop Bar BarSky & Breakfast restaurant

Number of Meeting Rooms
4

Meeting Room Capacity Max
100

Hotel Contact Information
+34 915 53 59 00
info.nyxmadrid@leonardo-hotels.com



NYX Hotel Bilbao



AT A GLANCE

Hotel City

Bilbao

Hotel Address

Areatza Kalea 4, 48005 Bilbao

Nearby Landmarks/Transport Links

When you do head out to explore the city, you'll find its top sights in easy reach, including the iconic Guggenheim Museum, located on the banks of the Nervión river in a futuristic silver structure designed by Frank Gehry, the Philippe Starck-designed Azkuna Zentroa cultural centre and the stunning Zubizuri footbridge, all perfect Instagram material. Being in the heart Bilbao city centre, you will also find a wide variety of gastronomic offer to taste pintxos and traditional food.

Number of Bedrooms

109

Food and Beverage Information

Clash Bar & Clash Gastro Restaurant

Number of Meeting Rooms

1

Meeting Room Capacity Max

60

Hotel Contact Information

+34 946 79 02 79

info.nyxbilbao@leonardo-hotels.com



Austria

● Leonardo Hotels ● Leonardo Boutique Hotels



Leonardo Vienna Schönbrunn



AT A GLANCE

Hotel City
Vienna

Hotel Address
Linke Wienzeile 224, A-1150 Vienna

Nearby Landmarks/Transport Links
Situating very close to the beautiful Schönbrunn Palace and conveniently located on the Linke Wienzeile, the hotel offers an excellent starting point for excursions and visits to the city centre.

Number of Bedrooms
283

Food and Beverage Information
Breakfast Restaurant and Bar

Number of Meeting Rooms
2

Meeting Room Capacity Max
35

Hotel Contact Information
wien.schoenbrunn@starinnhotels.com
+43 133 66222

Leonardo Vienna Otto-Wagner



AT A GLANCE

Hotel City
Vienna

Hotel Address
Graumannngasse 3-5, A-1150 Vienna

Nearby Landmarks/Transport Links
The hotel is located between Schönbrunn Palace and the Old Town in a trendy district with many different restaurants and interesting street art.

Number of Bedrooms
211

Food and Beverage Information
Breakfast Restaurant and Bar

Number of Meeting Rooms
-

Meeting Room Capacity Max
-

Hotel Contact Information
info.vienna-ottowagner@leonardo-hotels.com
+43 15 9901551

Leonardo Salzburg Airport



AT A GLANCE

Hotel City

Salzburg

Hotel Address

Franz-Brötzner-Straße 15, A-5071 Wals-Siezenheim

Nearby Landmarks/Transport Links

The business hotel is in the immediate vicinity of the airport and the Salzburg trade fair. The advantageous location is ideal for travellers looking for comfortable accommodation before or after a long flight.

Number of Bedrooms

90

Food and Beverage Information

Breakfast Restaurant and Bar

Number of Meeting Rooms

2

Meeting Room Capacity Max

TBA

Hotel Contact Information

salzburg.airport@starinnhotels.com
+43 662 855525

Leonardo Salzburg City Center



AT A GLANCE

Hotel City

Salzburg

Hotel Address

Hildmannplatz 5, A-5020 Salzburg

Nearby Landmarks/Transport Links

Located directly at the foot of the Hohensalzburg Fortress, about a 10-minute walk from Salzburg's city centre, this hotel is a place where comfort and modernity meet in close proximity to the historic city centre.

Number of Bedrooms

86

Food and Beverage Information

Breakfast Restaurant and Bar

Number of Meeting Rooms

-

Meeting Room Capacity Max

-

Hotel Contact Information

salzburg.zentrum@starinnhotels.com
+43 662 846846

Leonardo Vienna Hauptbahnhof



AT A GLANCE

Hotel City

Vienna

Hotel Address

Gerhard-Bronner-Straße 5, A-1100 Vienna

Nearby Landmarks/Transport Links

The modern building lies not far from the famous Belvedere Palace and directly at the main railway station, which is located in the middle of a new city quarter.

Number of Bedrooms

300

Food and Beverage Information

Breakfast Restaurant and Bar

Number of Meeting Rooms

-

Meeting Room Capacity Max

-

Hotel Contact Information

wien.premium@starinnhotels.com
+43 123 59009

Leonardo Vienna



AT A GLANCE

Hotel City

Vienna

Hotel Address

Matrosengasse 6-8, 1060 Vienna

Nearby Landmarks/Transport Links

The hotel is located on the tree-lined Europaplatz, with the best sights and attractions of the city well within easy reach. The Westbahnhof train station is only 200 metres from the front door and a short stroll takes you to Mariahilfer Straße, one of the city's most popular shopping destinations.

Number of Bedrooms

213

Food and Beverage Information

Bar & Grab 'n' Go Station

Number of Meeting Rooms

3

Meeting Room Capacity Max

70

Hotel Contact Information

+43 1 559 01 0
info.vienna@leonardo-hotels.com

Loft Collection
Salzburg Mirabell



AT A GLANCE

Hotel City
Salzburg

Hotel Address
Rainerstraße 7, A-5020 Salzburg

Nearby Landmarks/Transport Links
The hotel is located in direct proximity to the Mirabell Palace and the Salzburg Congress. With just a few minutes’ walk to the centre, the historic city is right at your feet.

Number of Bedrooms
25 apartments with kitchenette

Food and Beverage Information
-

Number of Meeting Rooms
-

Meeting Room Capacity Max
-

Hotel Contact Information
salzburg.mirabell@loftcollection.net
+43 662 234107

Leonardo Boutique
Linz City Center



AT A GLANCE

Hotel City
Linz

Hotel Address
Steingasse 6, A-4020 Linz

Nearby Landmarks/Transport Links
Located in the historic centre of Linz, surrounded by beautiful baroque buildings and many famous sights, the building is partly listed and offers a very special flair.

Number of Bedrooms
129

Food and Beverage Information
Breakfast Restaurant

Number of Meeting Rooms
-

Meeting Room Capacity Max
-

Hotel Contact Information
linz@starinnhotels.com
+43 732 210400

Loft Collection
Salzburg Linzergasse



AT A GLANCE

Hotel City
Salzburg

Hotel Address
Schallmooser Hauptstraße 2, A-5020 Salzburg

Nearby Landmarks/Transport Links
Situated in the well-known Linzergasse, the hotel is ideally located for all your explorations of the historic city. It is just 15 minutes by foot from the Central station and thus easy to get to and from.

Number of Bedrooms
21 apartments with kitchenette

Food and Beverage Information
-

Number of Meeting Rooms
-

Meeting Room Capacity Max
-

Hotel Contact Information
salzburg.linzergasse@loftcollection.net
+43 662 234168

Leonardo Boutique
Salzburg Gablerbräu



AT A GLANCE

Hotel City
Salzburg

Hotel Address
Richard-Mayr-Gasse 2, 5020 Salzburg

Nearby Landmarks/Transport Links
The location in the old town with its famous alleys, countless cafés and restaurants and the proximity to the sights, congress centre and trade fair make the hotel the perfect starting point for a successful stay in the city of Mozart.

Number of Bedrooms
71

Food and Beverage Information
Breakfast Restaurant and Bar

Number of Meeting Rooms
-

Meeting Room Capacity Max
-

Hotel Contact Information
salzburg.gablerbraeu@starinnhotels.com
+43 66 2879662

Italy

- Leonardo Hotels
- Leonardo Royal Hotels
- Leonardo Boutique Hotels
- NYX Hotels by Leonardo Hotels



Leonardo Milan City Center



AT A GLANCE

Hotel City
Milan

Hotel Address
Via Messina 10, 20154 Milan

Nearby Landmarks/Transport Links
Located right in the buzzing heart of Milan, between Corso Sempione and Porta Garibaldi, the Leonardo Milan City Center places you within easy reach of Milan’s best-loved attractions. Just a 10-minute tram ride from Piazza del Duomo, La Scala and the Montenapoleone shopping area, as well as the MiCo congress centre and the Fiera Milano City exhibition centre, hotel guests are equally well catered for whether they’re visiting for pleasure or on business.

Number of Bedrooms
130

Food and Beverage Information
Restaurant Golocious & Bar Caesar

Number of Meeting Rooms
5

Meeting Room Capacity Max
200

Hotel Contact Information
+39 02 318 170
info.milancity@leonardo-hotels.com

Leonardo Verona



AT A GLANCE

Hotel City
Verona

Hotel Address
Via Enrico Fermi 11/C , 37135 Verona

Nearby Landmarks/Transport Links
Conveniently located near the Fiera di Verona exhibition centre, with an indoor parking available, the hotel is also a great choice for business travellers who want to enjoy a stress-free trip in the best place to stay in Verona. If you are looking forward to exploring the wonderful surroundings of Lake Garda or to spending a fun day at Gardaland amusement park, Leonardo Hotel Verona has a great connection to the A4 motorway, placing you in only 20 minutes away from both.

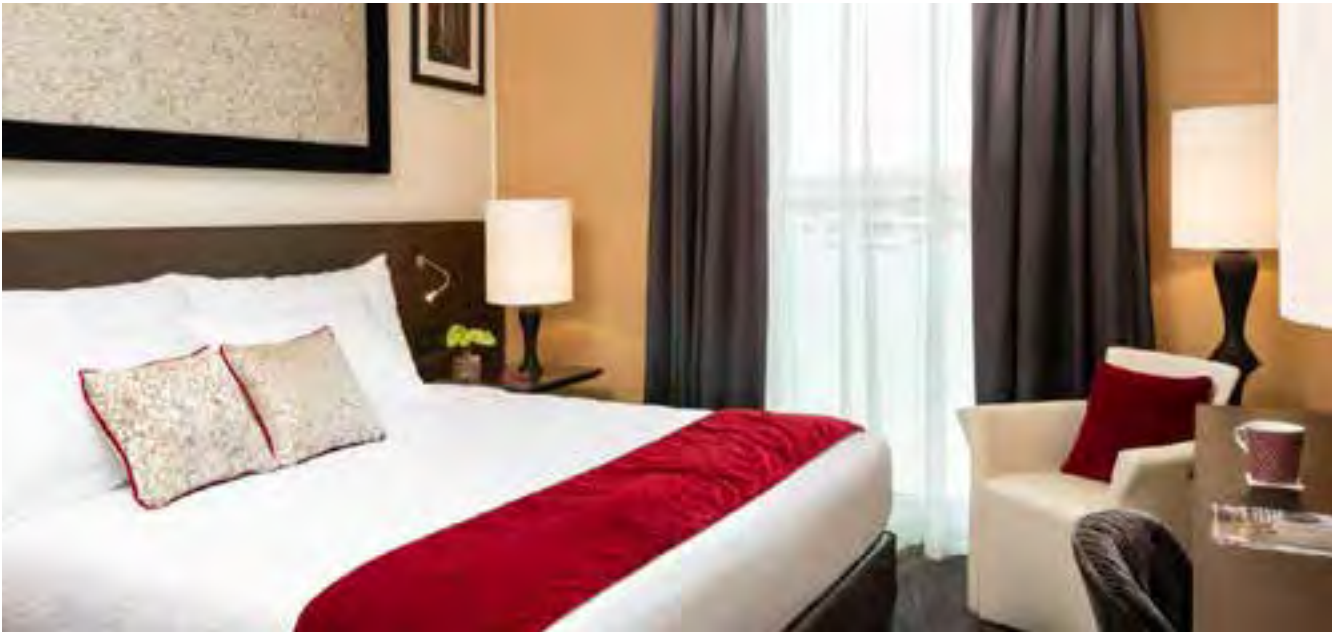
Number of Bedrooms
145

Food and Beverage Information
Breakfast restaurant and Bar

Number of Meeting Rooms
7

Meeting Room Capacity Max
90

Hotel Contact Information
+39 02 318170
info.verona@leonardo-hotels.com



Leonardo Royal Venice Mestre



AT A GLANCE

Hotel City
Venice

Hotel Address
Via Cà Marcello 6L, 30172 Mestre (Ve)

Nearby Landmarks/Transport Links
Exploring the ancient alleys and waterways of Venice is a feast for the senses, but staying right in the middle of the tourist hotspots can sometimes be overwhelming. So, rather than booking a city centre hotel in Venice, a smart solution is the Leonardo Royal Venice Mestre, with spacious, air-conditioned hotel rooms, conveniently located 10 minutes away from the Venice city center, right next to Mestre railway station which is also a direct ride from the airports.

Number of Bedrooms
244

Food and Beverage Information
Bar Leo & Restaurant Vitruv

Number of Meeting Rooms
7

Meeting Room Capacity Max
170

Hotel Contact Information
+39 04 187261
info.royalvenice@leonardo-hotels.com

Leonardo Boutique Rome Termini



AT A GLANCE

Hotel City
Rome

Hotel Address
Via Marghera 47/A, 00185 Rome

Nearby Landmarks/Transport Links
Positioned in the city’s historic centre, and just minutes from the main train station, Roma Termini, this smart and modern accommodation is surprisingly peaceful, and makes sightseeing and business travel easy. Close by are the impressive Piazza della Repubblica and the Teatro dell’Opera di Roma, one of Italy’s largest opera houses, while the Colosseum, the Pantheon, Villa Borghese and, of course, the romantic Trevi Fountain, are all within easy reach.

Number of Bedrooms
81

Food and Beverage Information
Breakfast Restaurant & Bar

Number of Meeting Rooms
2

Meeting Room Capacity Max
10

Hotel Contact Information
+39 06 492 071
info.rome@leonardo-hotels.com

Leonardo Lago di Garda Wellness and Spa



AT A GLANCE

Hotel City
Lazise

Hotel Address
Strada delle Greghe 7, 37017 Lazise

Nearby Landmarks/Transport Links
Located close to the wonderful Lake Garda and popular amusement and water parks such as Gardaland, Movieland and Caneva World, this hotel is your ideal holiday location, boasting 3 swimming pools and 11 spa treatment rooms.

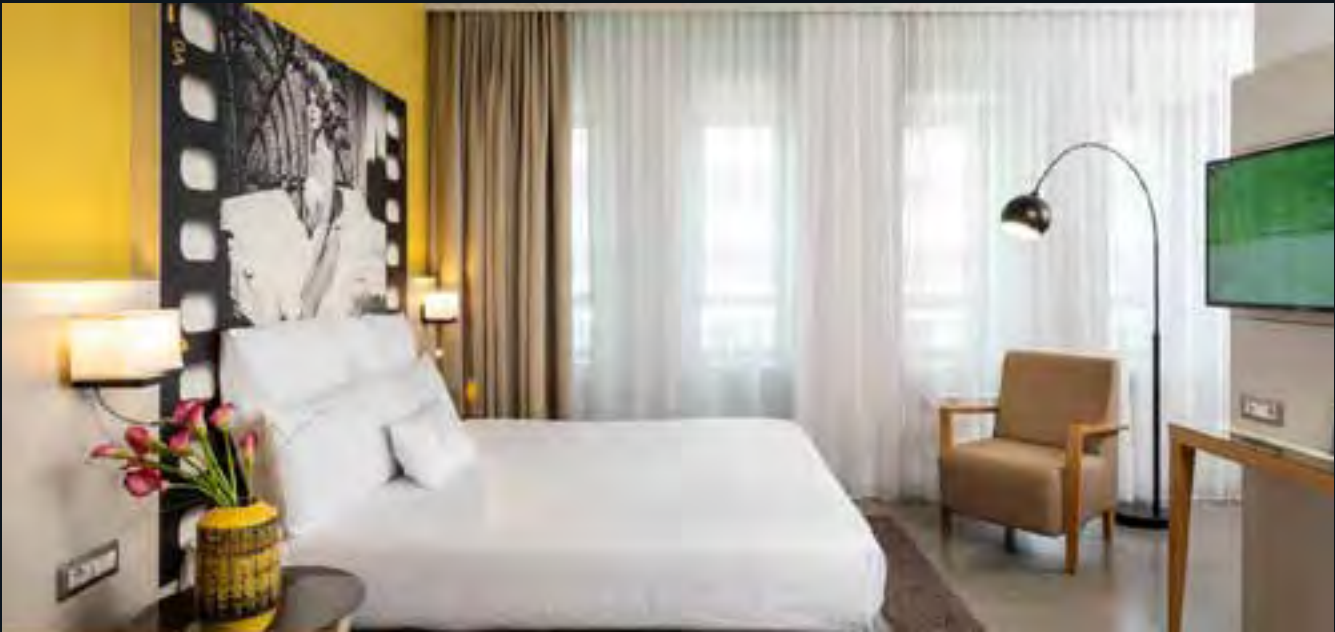
Number of Bedrooms
127

Food and Beverage Information
Restaurant and two bars

Number of Meeting Rooms
3

Meeting Room Capacity Max
200

Hotel Contact Information
leonardo-hotels.com
+39 02 318170
reservations.lagodigarda@leonardo-hotels.com



NYX Hotel Milan



AT A GLANCE

Hotel City
Milan

Hotel Address
Piazza IV Novembre 3, 20124 Milan

Nearby Landmarks/Transport Links
Located right next to the Milano Centrale train station, and just a few minutes' walk from the Quadrilatero Della Moda, Milan's designer shopping area, you'll find many of the city's top attractions right on the doorstep.

Number of Bedrooms
299

Food and Beverage Information
Bar Clash & Restaurant Clash

Number of Meeting Rooms
-

Meeting Room Capacity Max
-

Hotel Contact Information
+39 02 22175 500
info.NYXmilan@leonardo-hotels.com



NYX Milan

Republic of Ireland

● Leonardo Hotels ● NYX Hotels by Leonardo Hotels



Leonardo Hotel Dublin Christchurch



AT A GLANCE

Hotel City
Dublin

Hotel Address
Christchurch Place, Dublin, 8

Nearby Landmarks/Transport Links
Christchurch Cathedral and Temple Bar

Number of Bedrooms
182

Food and Beverage Information
Onsite Bar and Restaurant

Number of Meeting Rooms
-

Meeting Room Capacity Max
-

Hotel Contact Information
+353 1 454 0000
christchurch@leonardohotels.com

Leonardo Hotel Dublin Parnell Street



AT A GLANCE

Hotel City
Dublin

Hotel Address
Moore Street Plaza, Parnell St, Dublin 1, D01 E0H3

Nearby Landmarks/Transport Links
Henry Street, O'Connell Street

Number of Bedrooms
253

Food and Beverage Information
Onsite Bar and Restaurant

Number of Meeting Rooms
3

Meeting Room Capacity Max
40

Hotel Contact Information
+353 1 878 4900
parnellstreet@leonardohotels.com

Leonardo Hotel
Galway



AT A GLANCE

Hotel City
Galway

Hotel Address
Quay Street, Galway, Ireland

Nearby Landmarks/Transport Links
City Centre, Spanish Arch and Train station

Number of Bedrooms
130

Food and Beverage Information
Onsite Bar and Restaurant

Number of Meeting Rooms
-

Meeting Room Capacity Max
-

Hotel Contact Information
+353 91 566444
galway@leonardohotels.com

Leonardo Hotel
Cork



AT A GLANCE

Hotel City
Cork

Hotel Address
Anderson's Quay, Cork, Ireland

Nearby Landmarks/Transport Links
River Lee, Cork Train Station and Cork Opera House

Number of Bedrooms
133

Food and Beverage Information
Onsite Bar and Restaurant

Number of Meeting Rooms
1

Meeting Room Capacity Max
40

Hotel Contact Information
+353 21 494 3000
cork@leonardohotels.com



NYX Hotel Dublin Portobello
Opening November 2023



AT A GLANCE

Hotel City
Dublin

Hotel Address
Portobello, Dublin 8, BN1 2FW

Nearby Landmarks/Transport Links
NYX Dublin Portobello is located in Dublin's City Centre on the Grand Canal at Portobello Harbour. Nearby attractions include Trinity College, Christchurch Cathedral, St Stephen's Green Park and Grafton Street. The Luas stop is a 5 minute walk from the hotel and Dublin Airport is 35 minutes by taxi.

Number of Bedrooms
175

Food and Beverage Information
Onsite Bar and Restaurant

Number of Meeting Rooms
-

Meeting Room Capacity Max
-

Hotel Contact Information
nyx-hotels.ie

Cyprus

● Leonardo Hotels ● NYX Hotels by Leonardo Hotels



Leonardo Crystal Cove Hotel & Spa by the Sea



AT A GLANCE

Hotel City

Protaras (Adults Only Hotel)

Hotel Address

Konnou Avenue 45, 5403 Protaras

Nearby Landmarks/Transport Links

Overlooking the beach and not far from Protaras town centre, Leonardo Crystal Cove Hotel and Spa by the Sea is a luxury lifestyle hotel that offers stylish, design-led accommodation and iconic dining in stunning surrounds. At Leonardo Crystal Cove Hotel and Spa by the Sea guests have the chance to enjoy exquisite cuisine, soak up nightly entertainment and indulge in relaxing spa treatments before retreating to luxurious accommodation.

Number of Bedrooms

120

Food and Beverage Information

Blue Horizon Restaurant, Little Italy Restaurant, Ariadne Lounge Bar, Thetis Pool Bar

Number of Meeting Rooms

-

Meeting Room Capacity Max

-

Hotel Contact Information

+357 23 845900
info@crystalcove.leonardohotelscyprus.com

Leonardo Cypria Bay



AT A GLANCE

Hotel City

Paphos

Hotel Address

Theas Afroditis 10, Paphos

Nearby Landmarks/Transport Links

Overlooking the Mediterranean Sea, not far from Paphos's city centre and within easy reach of Paphos airport, Leonardo Cypria Bay is the perfect destination for single travellers, couples, and families wanting an all-inclusive holiday.

Number of Bedrooms

293

Food and Beverage Information

All-inclusive Buffet Restaurant and 3 a la carte restaurants open from May to October

Number of Meeting Rooms

1

Meeting Room Capacity Max

-

Hotel Contact Information

+357 26 882688
info@bay.leonardohotelscyprus.com

Leonardo Laura
Beach & Splash Resort



AT A GLANCE
Hotel City Paphos
Hotel Address Chlorakas Avenue 8220 Chlorakas, Paphos
Nearby Landmarks/Transport Links Located close to Paphos’s bustling city centre and not far from Paphos airport, all-inclusive, family-friendly, activity-based.
Number of Bedrooms 412
Food and Beverage Information All-inclusive 2 Buffet restaurants, 3 A La Carte restaurants open from May - October. Snacks
Number of Meeting Rooms -
Meeting Room Capacity Max -
Hotel Contact Information +357 26 944900 info@laura.leonardohotelscyprus.com

Leonardo Plaza Cypria Maris
Beach Hotel & Spa



AT A GLANCE
Hotel City Geroskipou, Paphos (Adults Only Hotel)
Hotel Address Poseidonos Ave 10, Yeroskipou 8204, Paphos
Nearby Landmarks/Transport Links Located in a prime location close to Paphos Harbour and Paphos Airport.
Number of Bedrooms 382
Food and Beverage Information Buffet Restaurant, Snacks, 4 A la Carte Restaurants open from May- October. Bar and nightclub
Number of Meeting Rooms 4
Meeting Room Capacity Max 550
Hotel Contact Information +35726964111 info@maris.leonardohotelscyprus.com

Leonardo
Boutique Larnaca



AT A GLANCE
Hotel City Larnaca
Hotel Address 57 Constantinou Kalogera, 6021 Larnaca
Nearby Landmarks/Transport Links Where the coast meets the city, Leonardo Boutique Hotel, is the centre of it all. An upscale 4-star hotel boasting 55 sublime accommodations, it offers its guests a lavish retreat into a world of comfort and well-being. It is set in an unbeatable location, in the heart of Larnaca’s picturesque downtown, surrounded by lively cafes, restaurants, pubs, vibrant shops, and just steps away from the iconic Finikoudes palm-lined seafront promenade
Number of Bedrooms 65
Food and Beverage Information Breakfast Buffet Restaurant, Café, Bar, Executive Lounge
Number of Meeting Rooms 1
Meeting Room Capacity Max 24
Hotel Contact Information +357 2404 0000 info@lbl.leonardohotelscyprus.com

GrandResort by
Leonardo Hotels



AT A GLANCE
Hotel City Limassol
Hotel Address Amathountos 127, Agios Tychon 4433, Limassol
Nearby Landmarks/Transport Links The location of the GrandResort by Leonardo Hotels is a perfect blend of tranquility and convenience. Just a short drive away, guests can explore the vibrant city center of Limassol, renowned for its archaeological treasures, the lively costal promenade, and vivid nightlife. The hotel is also conveniently located near popular attractions such as Limassol Castle and the Limassol Marina, allowing guests to easily immerse themselves in the rich culture and charm of Cyprus.
Number of Bedrooms 255
Food and Beverage Information Various Restaurants & Bars
Number of Meeting Rooms 6
Meeting Room Capacity Max 800
Hotel Contact Information +357 25 634333 grand@grandresort.com.cy



NYX Hotel Limassol



AT A GLANCE

Hotel City
Limassol

Hotel Address
Anexartusias str. & Christodoulou Chatzipavlou str.,
Limassol 3040, Cyprus”

Nearby Landmarks/Transport Links
NYX Hotel Limassol emerges the distinctive and buzzing vitality of Limassol city and provides both the leisure and business guest with an extraordinary experience. Located in Limassol's old town, opposite the beach, near the Port, Limassol Medieval Castle, and the renowned Limassol Marina, you'll be amid the city's individual spirit and cultural richness.

Number of Bedrooms
189

Food and Beverage Information
Café Bistro, Asian Restaurant, Roof Bar and Restaurant,
Lounge Bar & Executive Lounge

Number of Meeting Rooms
4

Meeting Room Capacity Max
88

Hotel Contact Information
+357 25 371111
info@limassol.nyxhotelscyprus.com



Poland

● Leonardo Royal Hotels ● Leonardo Boutique Hotels ● NYX Hotels by Leonardo Hotels



Leonardo Royal Warsaw



AT A GLANCE

Hotel City

Warsaw

Hotel Address

Grzybowska 45, 00-844 Warsaw

Nearby Landmarks/Transport Links

Whatever brings you to the Polish capital, it's unlikely you'll find a better location than the luxurious Leonardo Royal Warsaw. Built on the upper floors of one of the tallest buildings in the city, the hotel commands stunning panoramic views over the centre of downtown Warsaw. Once you're back at ground level, you'll find the nearby Rondo ONZ metro station and unmissable sights, such as the Warsaw Uprising Museum and the Palace of Culture and Science, within easy walking distance. Business guests will also be exactly where they need to be, in the heart of the city's financial district, close to the central train station and a short journey from the airport. In addition, the Leonardo Royal Hotel Warsaw has six large conference rooms which can be combined to hold up to 380 guests.

Number of Bedrooms

178

Food and Beverage Information

Restaurant Vitruv & Bar

Number of Meeting Rooms

6

Meeting Room Capacity Max

360

Hotel Contact Information

+48 22 278 88 88

info.royalwarsaw@leonardo-hotels.com

Leonardo Boutique Kraków Old Town



AT A GLANCE

Hotel City
Kraków

Hotel Address
ul. Świętej Gertrudy 12, 31-048 Kraków

Nearby Landmarks/Transport Links
Popular tourist attractions next to the hotel are the famous Market Square, Kazimierz, the former Jewish District, the Wawel Royal Castle, St. Mary’s Basilica, and St. Florian’s Gate.

Number of Bedrooms
100

Food and Beverage Information
Restaurant and Bar

Number of Meeting Rooms
3

Meeting Room Capacity Max
40

Hotel Contact Information
+48 12 295 91 00
info.boutiqueKraków@leonardo-hotels.com

Leonardo Boutique Kraków City Center



AT A GLANCE

Hotel City
Kraków

Hotel Address
Wygoda 8, 31-106 Kraków

Nearby Landmarks/Transport Links
With the tranquil Vistula, the longest river in Poland, only 400 meters away, and the lovely Old Town and its intriguing Castle within walking distance, the hotel is an attractive choice for business and tourist guests looking for a convenient location and restfulness.

Number of Bedrooms
60

Food and Beverage Information
Restaurant and Bar

Number of Meeting Rooms
3

Meeting Room Capacity Max
105

Hotel Contact Information
+48 12 4469090



NYX Hotel Warsaw



AT A GLANCE

Hotel City
Warsaw

Hotel Address
Chmielna 71, 00-801 Warsaw

Nearby Landmarks/Transport Links
Located in the fast-developing Wola business neighbourhood of Warsaw city centre, close to the iconic Palace of Culture and Science, the NYX Hotel Warsaw is also in easy reach of many more popular sights, from the Copernicus Science Centre to the Museum of Modern Art, the POLIN Museum of History of Polish Jews and the National Museum. The transport links are just as convenient, with direct access to the central train station, meaning Warsaw Chopin Airport is just 20 minutes away.

Number of Bedrooms
331

Food and Beverage Information
Clash Restaurant & Bar & Rooftop Bar Ether

Number of Meeting Rooms
5

Meeting Room Capacity Max
260

Hotel Contact Information
+48 22 278 88 88
info.nyxwarsaw@leonardo-hotels.com

Switzerland

● Leonardo Hotels ● Leonardo Boutique Hotels



Leonardo Zurich Airport



AT A GLANCE

Hotel City
Zurich

Hotel Address
Flughafenstrasse 11, 8302 Zurich-Kloten

Nearby Landmarks/Transport Links
A stylish four-star hotel located just 1km from the terminal, the Leonardo Zurich Airport is ideally placed both for people travelling to and from the airport as well as business and leisure guests wishing to explore the Swiss city for themselves. With excellent public transport links, Zurich city centre can be reached within 15 minutes and Zurich Exhibition Hall is only 3 stops away by train.

Number of Bedrooms
116

Food and Beverage Information
Restaurants and Bar

Number of Meeting Rooms
3

Meeting Room Capacity Max
150

Hotel Contact Information
+41 43 549 06 00
info.zurichairport@leonardo-hotels.com



Leonardo Boutique
Rigihof Zurich



AT A GLANCE

Hotel City

Zurich

Hotel Address

Universitätstrasse 101, 8006 Zurich

Nearby Landmarks/Transport Links

Enjoy the best of traditional Zurich hospitality in sumptuous surrounds when you stay at Leonardo Boutique Hotel Rigihof Zurich. Housed in a 1930s Bauhaus building in Zurich’s university district, Leonardo Boutique Hotel Rigihof Zurich is ideal for guests travelling to Switzerland on holidays or for business.

Number of Bedrooms

67

Food and Beverage Information

Restaurant & Bar Rigihof

Number of Meeting Rooms

1

Meeting Room Capacity Max

32

Hotel Contact Information

+41 44 360 12 00

info.zurich@leonardo-hotels.com



ALDEN Suites Splügenschloss
Leonardo Limited Edition

LEONARDO *Limited Edition*



AT A GLANCE

Hotel City

Zurich

Hotel Address

Splügenstrasse 2, CH-8002 Zurich

Nearby Landmarks/Transport Links

When it’s time to explore the city itself, you’ll find yourself in easy reach of many of its best-loved sights including Lake Zurich, the Old Town, the famous Bahnhofstrasse (the city’s most exclusive shopping avenue) and also the financial district, making the Leonardo Limited Edition Suite Hotel Splügenschloss Zurich an ideal base whether you’re visiting for a city break or an important business trip.

Number of Bedrooms

22

Food and Beverage Information

Restaurant and Bar Goodwin

Number of Meeting Rooms

-

Meeting Room Capacity Max

-

Hotel Contact Information

+41 44 28999999

welcome@alden.ch



If you appreciate the comfort of a boutique hotel but do not want to miss out on the elegance of a grand hotel, the Leonardo Limited Edition Suite Splügenschloss Zurich is just the place for you.

Located in the heart of this beautiful Swiss city, the hotel dates back to 1895 and has 22 luxuriously furnished suites that offer five-star luxury with a personal touch, combining classic splendour with modern comfort.



Hungary

● Leonardo Hotels ● Leonardo Boutique Hotels



Leonardo Budapest



AT A GLANCE

Hotel City
Budapest

Hotel Address
Tompá utca 30-34, 1094 Budapest

Nearby Landmarks/Transport Links
Located on a quiet street in the financial district, this four-star hotel is just a short walk from the city centre and the banks of the Danube, and in easy reach of the bus and train stations, as well as the city airport.

Number of Bedrooms
182

Food and Beverage Information
“LEO BISTRO” and Bar

Number of Meeting Rooms
3

Meeting Room Capacity Max
60

Hotel Contact Information
+36 01 47772272
info.budapest@leonardo-hotels.com

Leonardo Boutique
Budapest M-Square



AT A GLANCE

Hotel City

Budapest

Hotel Address

Madách Imre tér 2, 1075 Budapest

Nearby Landmarks/Transport Links

A few minutes away from the Budapest Eye, Madách Square and the Palace District, this prime location fits perfectly for business trips or for holidays in Budapest.

Number of Bedrooms

71

Food and Beverage Information

Breakfast restaurant & Bar

Number of Meeting Rooms

-

Meeting Room Capacity Max

-

Hotel Contact Information

+36 1 80163 00

reservations.boutiquebudapest@leonardo-hotels.com



Greece

● Leonardo Hotels ● NYX Hotels by Leonardo Hotels



Leonardo Kolymbia Resort Rhodes



AT A GLANCE

Hotel City
Rhodes

Hotel Address
2 Athinon str., 85103, Kolymbia, Rhodes

Nearby Landmarks/Transport Links
Leonardo Kolymbia Resort is conveniently located half an hour from Rhodes Old Town and Kolymbia Port, ideal for guests wanting to explore the local area. For an all-inclusive, five-star, family-friendly holiday in Rhodes, choose Leonardo Kolymbia Resort.

Number of Bedrooms
114

Food and Beverage Information
Blue Horizon Restaurant, Ariadne Lounge Bar, Thetis Pool Bar

Number of Meeting Rooms
-

Meeting Room Capacity Max
-

Hotel Contact Information
+30 22 41056350
info@kolymbiareort.leonardohotelsgreece.com





NYX Esperia Palace Athens



AT A GLANCE
Hotel City Athens
Hotel Address 22 Stadiou and Edouardou Lo, Athens 10564, Greece
Nearby Landmarks/Transport Links NYX Esperia Palace Hotel Athens radiates the unique and dynamic energy and spirit of Athens. This urban-style, sassy, 5-star hotel is centrally located on the famous Stadiou Avenue, next to the Metro station "Panepistimio" just a few steps from Syntagma Square and the shopping street of Ermou.
Number of Bedrooms 212
Food and Beverage Information Café Bistro, Restaurant, Lounge Club & Pool Restaurant
Number of Meeting Rooms 3
Meeting Room Capacity Max 120
Hotel Contact Information +30 21 6600 5600 info@athens.nyxhotelsgreece.com



Czech Republic

NYX Hotels by Leonardo Hotels



NYX Hotel Prague



AT A GLANCE

Hotel City
Prague

Hotel Address
Panská 9, 110 00 Prague

Nearby Landmarks/Transport Links
Right in the middle of Prague’s lively city centre, NYX Hotel Prague is a design-led concept hotel that reflects the hip heart and soul of the Czech Republic.

Number of Bedrooms
91

Food and Beverage Information
Breakfast restaurant and bar “Clash”

Number of Meeting Rooms
1

Meeting Room Capacity Max
42

Hotel Contact Information
+420 22 6222800
reservations.prague@leonardo-hotels.com

Romania

● Leonardo Hotels



Leonardo Bucharest City Center



AT A GLANCE

Hotel City
Bucharest

Hotel Address
166 Calea Victoriei - 1st District, 10096 Bucharest

Nearby Landmarks/Transport Links
Located directly in the heart of Bucharest, the hotel is the perfect place to start exploring the beautiful and historical city. With the main attractions just around the corner and only a few minutes walking distance away, you have everything you need for a relaxed stay. Whether you decide to spend the day sightseeing, trying out one of the plenty cafés or restaurants, or simply enjoying the hotel itself, you are always in for a treat.

Number of Bedrooms
78

Food and Beverage Information
Restaurant & Bar

Number of Meeting Rooms
2

Meeting Room Capacity Max
70

Hotel Contact Information
+40 74 616 666 5
reservations.bucharestcitycenter@leonardo-hotels.com



Coming Soon

LILINBLUM 15 HOTEL

Lilinblum 15, Tel Aviv, Israel
Opening in 2023
56 Rooms

THE KABBALAH HOUSE

Ben Ami Street 14, Tel Aviv, Israel
Opening in 2023
78 Rooms

NYX THESSALONIKI

Tsimiski 1, Thessaloniki, Saloniki, Greece
Opening in 2024
135 Rooms

BEN SIRA HOTEL

Ben Sira 16, Jerusalem, Israel
Opening in 2023
88 Rooms

PALATIN HOTEL

Nahalat Binyamin Tel Aviv, Israel
Opening in 2023
74 Rooms

GOSTIN HOUSE

Liverpool, England
Opening in 2027
207 Rooms

NAFPLIO KANDIA GREECE

Kandia, Greece
Opening in 2024
137 Rooms

LEONARDO ESSLINGEN

Grabbrunnenstraße 19, 73728 Esslingen
Opening in 2023
150 rooms

NYX HOTEL NICOSIA

11 Archbishop Makarios Avenue,
Nicosia, Cyprus
Opening in 2025
198 Rooms

LEONARDO CLUB LATCHI

Polis, Cyprus
Opening in 2025
250 Rooms

SHMU'EL HANAGID HOTEL

Shmu'el HaNagid 13, Jerusalem, Israel
Opening in 2023
72 Rooms

HOTEL DONA LUISA

Lisbon, Portugal
Opening in 2024
144 Rooms

ALLIANCE HOUSE IN JERUSALEM

Ki'akh St 5, Jerusalem, Israel
Opening in 2023
90 Rooms

DEAD SEA HOTEL

Dead Sea, Israel
Opening in 2024
218 Rooms

W EILAT

Eilat, Israel
Opening in 2024
208 Rooms

NYX EDINBURGH

Edinburgh, Scotland
Opening in 2024
125 Rooms

BIALIK

Tel-Aviv, Israel
Opening in 2024
50 Rooms

CAMILO HOTEL

Rua de bonfim 252-306 &
Avenida Camilo 140-160, Porto, Portugal
Opening in 2024
560 Rooms

JERUSALEM BLVD

Tel-Aviv, Israel
Opening in 2024
110 Rooms

NYX HOTEL JERUSALEM

Yafo 113, Jerusalem, Israel
Opening in 2024
168 Rooms

LEONARDO HOTEL LIVERPOOL PALL MALL

Liverpool, England
Opening in 2024
283 Rooms

HOTEL IN EIN GEV

Ein Gev, Israel
Opening in 2025
120 Rooms

DESERT RESORT ARAD

Arad, Israel
Opening in 2025
109 Rooms

NOF EILOT

Eilat, Israel
Opening in 2025
126 Rooms

HERZLIYA

Herzliya, Israel
Opening in 2025
219 Rooms

HERBERT SAMUEL

Jerusalem, Israel
Opening in 2025
73 Rooms

GAT RIMON

Tel-Aviv, Israel
Opening in 2027
230 Rooms

RON HOTEL

Jerusalem, Israel
Opening in 2027
169 Rooms

